

Appendix 1 – Watershed tracking

Plan Name	Watershed	Sub Watershed	Sub Watershed	BMP/Action	Unit	Goal	Implemented	TMLD LRs	% Implemented	Pollutant ID	Unit	LR Achieved
Deckers Creek	Deckers Creek	WV Deckers Main	WV M-8	Aggregated BMP Load Reductions								
Deckers Creek	Deckers Creek	WV Deckers Main	WV M-8	Passive Treatment		1.00						
Deckers Creek	Deckers Creek	WV Deep Hollow	WV M-8-A.7	Passive Treatment		1.00						
Deckers Creek	Deckers Creek	WV Dilan Creek	WV M-8-G	Passive Treatment		1.00						
Deckers Creek	Deckers Creek	WV Hartman Run	WV M-8-O.5A	Passive Treatment		2.00						
Deckers Creek	Deckers Creek	WV Kanes Creek	WV M-8-I	Aggregated BMP Load Reductions				9,350.00		Metals (Aluminum)		52,929.00
Deckers Creek	Deckers Creek	WV Kanes Creek	WV M-8-I	Aggregated BMP Load Reductions				45,471.00		Metals (Iron)		72,119.00
Deckers Creek	Deckers Creek	WV Kanes Creek	WV M-8-I	Aggregated BMP Load Reductions						Acidity	LBS/YR	135,800.00
Deckers Creek	Deckers Creek	WV Kanes Creek	WV M-8-I	Constructed Wetland Aerobic	INDIVIDUAL UNITS	3.00	3.00		100			
Deckers Creek	Deckers Creek	WV Kanes Creek	WV M-8-I	Land Reconstruction, Abandoned Mined Land	UNITS	1.00	1.00		100			
Deckers Creek	Deckers Creek	WV Kanes Creek	WV M-8-I	Limestone Doser	UNITS	2.00	2.00		100			
Deckers Creek	Deckers Creek	WV Kanes Creek	WV M-8-I	Limestone Open Channel	UNITS	4.00	4.00		100			
Deckers Creek	Deckers Creek	WV Kanes Creek	WV M-8-I	Sulfate Reducing Bioreactor	UNITS	1.00	1.00		100			
Deckers Creek	Deckers Creek	WV Laurel Run	WV M-8-H	Passive Treatment		1.00						
Deckers Creek	Deckers Creek	WV Slab Camp Run	WV M-8-F	Aggregated BMP Load Reductions				4,974.00		Metals (Manganese)	LBS/YR	
Deckers Creek	Deckers Creek	WV Slab Camp Run	WV M-8-F	Aggregated BMP Load Reductions				192,500.00		Metals (Iron)	LBS/YR	50,300.00
Deckers Creek	Deckers Creek	WV Slab Camp Run	WV M-8-F	Aggregated BMP Load Reductions						Acidity	LBS/YR	82,000.00
Deckers Creek	Deckers Creek	WV Slab Camp Run	WV M-8-F	Aggregated BMP Load Reductions						Metals (Aluminum)	LBS/YR	45,300.00
Deckers Creek	Deckers Creek	WV Slab Camp Run	WV M-8-F	Aggregated BMP Load Reductions						pH	TONS/YR	305.37
Deckers Creek	Deckers Creek	WV Slab Camp Run	WV M-8-F	Constructed Wetland Anaerobic	UNITS	2.00	2.00		100			
Deckers Creek	Deckers Creek	WV Slab Camp Run	WV M-8-F	Limestone Leach Bed/Pond	UNITS	2.00	2.00		100			
Deckers Creek	Deckers Creek	WV Slab Camp Run	WV M-8-F	Limestone Open Channel	UNITS	1.00	1.00		100			
Deckers Creek	Deckers Creek	WV Slab Camp Run	WV M-8-F	Open Channel	FT	2,700.00	2,700.00		100			
Deckers Creek	Deckers Creek	WV Slab Camp Run	WV M-8-F	Vertical Flow Treatment System	UNITS	4.00	4.00		100			

Plan Name	Watershed	Sub Watershed	BMP/Action	Unit	Goal	Implemented	TMDL LR	% Implemented	Impairment ID	Pollutant ID	Unit	LR Achieved
Lamberts Run	Lamberts Run	WVLR1901	Aggregated BMP Load Reductions				2,140.00			Metals (Aluminum)		
Lamberts Run	Lamberts Run	WVLR1901	Aggregated BMP Load Reductions				8,878.00			Metals (Iron)		
Lamberts Run	Lamberts Run	WVLR1901	Aggregated BMP Load Reductions							Acidity	LBS/YR	0.00
Lamberts Run	Lamberts Run	WVLR1901	Constructed Wetland Aerobic	UNITS	3.00	0.00		0				
Lamberts Run	Lamberts Run	WVLR1901	Limestone Open Channel	UNITS	1.00	0.00		0				
Lamberts Run	Lamberts Run	WVLR1901	Lined Waterway or Outlet	UNITS	1.00	0.00		0				
Lamberts Run	Lamberts Run	WVLR1902	Aggregated BMP Load Reductions				273.00			Metals (Aluminum)		
Lamberts Run	Lamberts Run	WVLR1902	Aggregated BMP Load Reductions				1,416.00			Metals (Iron)		
Lamberts Run	Lamberts Run	WVLR1902			0.00	0.00						
Lamberts Run	Lamberts Run	WVLR1902			0.10							
Lamberts Run	Lamberts Run	WVLR1903	Aggregated BMP Load Reductions				735.00			Metals (Manganese)		8,200.00
Lamberts Run	Lamberts Run	WVLR1903	Aggregated BMP Load Reductions				1,937.00			Metals (Aluminum)		2,800.00
Lamberts Run	Lamberts Run	WVLR1903	Aggregated BMP Load Reductions				7,315.00			Metals (Iron)		40,420.00
Lamberts Run	Lamberts Run	WVLR1903	Constructed Wetland Aerobic	UNITS		3.00						
Lamberts Run	Lamberts Run	WVLR1903	Constructed Wetland Anaerobic	UNITS	1.00	1.00		100				
Lamberts Run	Lamberts Run	WVLR1903	Limestone Leach Bed/Pond	UNITS	1.00	1.00		100				
Lamberts Run	Lamberts Run	WVLR1903	Limestone Open Channel	UNITS	1.00	4.00		400				
Lamberts Run	Lamberts Run	WVLR1904	Aggregated BMP Load Reductions				1,067.00			Metals (Manganese)		
Lamberts Run	Lamberts Run	WVLR1904	Aggregated BMP Load Reductions				3,872.00			Metals (Aluminum)		400.00
Lamberts Run	Lamberts Run	WVLR1904	Aggregated BMP Load Reductions				4,153.00			Metals (Iron)		19,200.00
Lamberts Run	Lamberts Run	WVLR1904	Anoxic Limestone Drain	UNITS	4.00	4.00		100				
Lamberts Run	Lamberts Run	WVLR1904	Constructed Wetland Aerobic	UNITS	3.00	1.00		33				
Lamberts Run	Lamberts Run	WVLR1905	Aggregated BMP Load Reductions				659.00			Metals (Aluminum)		34,800.00
Lamberts Run	Lamberts Run	WVLR1905	Aggregated BMP Load Reductions				2,485.00			Metals (Iron)		34,600.00
Lamberts Run	Lamberts Run	WVLR1905	Constructed Wetland Aerobic	UNITS		1.00						
Lamberts Run	Lamberts Run	WVLR1905	Limestone Leach Bed/Pond	UNITS		1.00						
Lamberts Run	Lamberts Run	WVLR1905	Steel Slag Treatment	UNITS		1.00						

Plan Name	Watershed	Sub Watershed	BMP/Action	Unit	Goal	Implemented	Year	% Implemented	Pollutant ID	Target LR	Unit	LR Achieved	% LR Achieved
Lost River	Lost River	WV Lost River	Aggregated BMP Load Reductions		1.00		2011		Nitrogen	29,954.00	LBS/YR	6,738.00	22
Lost River	Lost River	WV Lost River	Aggregated BMP Load Reductions						Pathogens (Coliform)	2.39E+17	CFU	5.29E+18	2212
Lost River	Lost River	WV Lost River	Aggregated BMP Load Reductions						Phosphorus	5,300.00	TONS/YR	44,112.40	832
Lost River	Lost River	WV Lost River	Aggregated BMP Load Reductions						Sedimentation-Siltation	2,700.00	LBS/YR	7,048.00	261
Lost River	Lost River	WV Lost River	Alternative Water Sources		80.00								
Lost River	Lost River	WV Lost River	Barnyard Runoff Management	UNITS	13.00	1.00		8					
Lost River	Lost River	WV Lost River	Feed Management	INDIVIDUAL UNITS		2.00							
Lost River	Lost River	WV Lost River	Fence	FT		6,000.00							
Lost River	Lost River	WV Lost River	Grazing Planned Systems	UNITS		5.00							

Lost River	Lost River	WV Lost River	Natural Channel Restoration		10,000.00							
Lost River	Lost River	WV Lost River	Riparian Buffers - Vegetative	AC		13.80						
Lost River	Lost River	WV Lost River	Riparian Forest Buffer	AC	110.00	3.80		3				
Lost River	Lost River	WV Lost River	Sediment Basin	AC	100.00		2011					
Lost River	Lost River	WV Lost River	Tree/Shrub Establishment	AC	50.00		2011					
Lost River	Lost River	WV Lost River	Watering Facility	UNITS	5.00	0.00		0				
Lost River	Lost River	WV Lost River	Wetland Restoration	AC	10.00		2011					

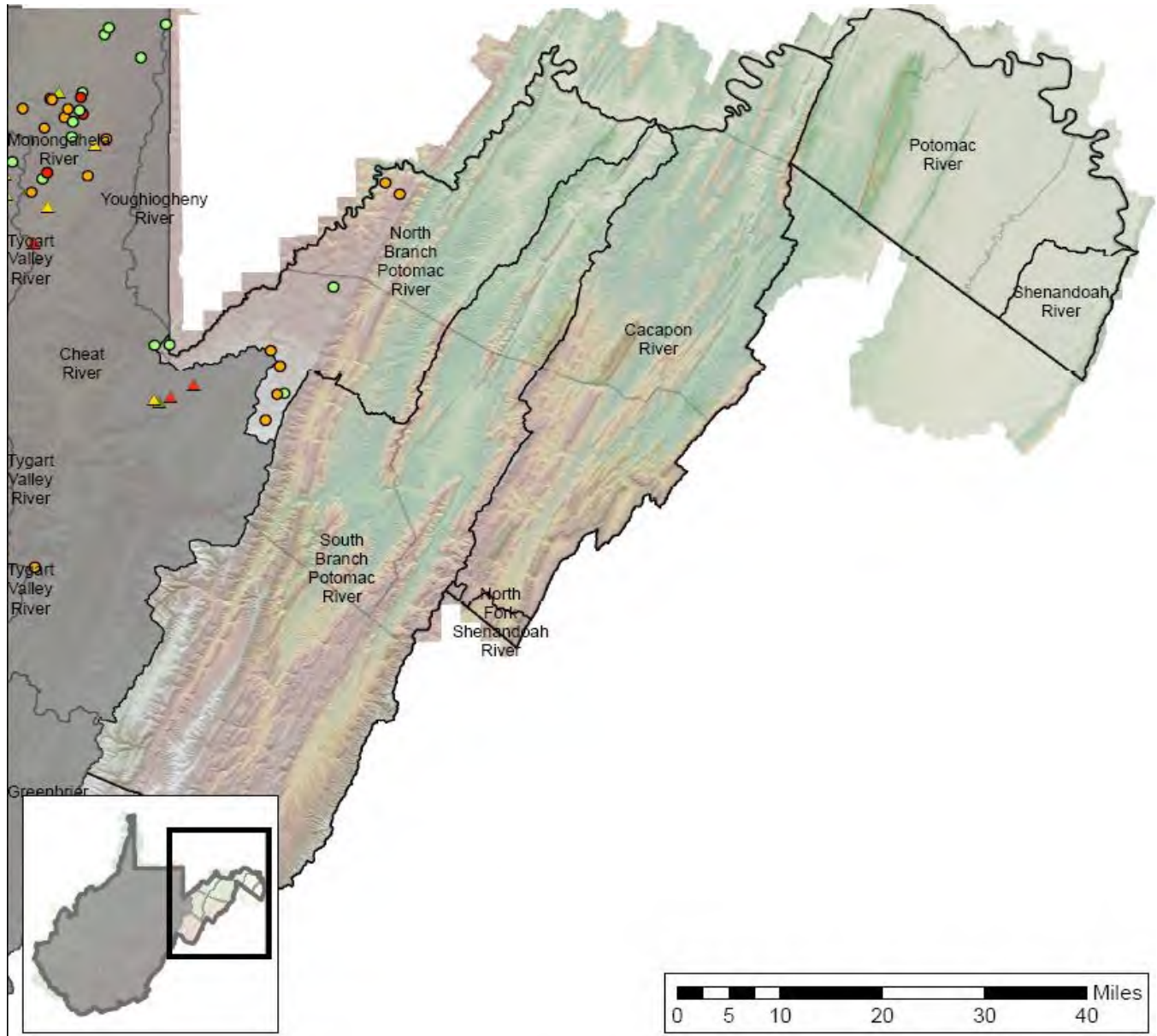
Watershed Based Plan	HUC8-Name	HUC12	HUC-names
Lost River	Cacapon	20700030502	Upper Cove Run-Lost River
Lost River	Cacapon	20700030504	Kimsey Run-Lost River
Lower Cheat River	Cheat	050200040707	Cheat Lake-Cheat River
Lower Cheat River	Cheat	050200040706	Bull Run-Cheat River
Lower Cheat River	Cheat	050200040705	Greens Run-Cheat River
Lower Cheat River	Cheat	050200040704	Roaring Creek-Cheat River
Lower Cheat River	Cheat	050200040703	Muddy Creek
Lower Cheat River	Cheat	050200040702	Pringle Run-Cheat River
Lower Cheat River	Cheat	050200040605	Lower Big Sandy Creek
Lower Cheat River	Cheat	050200040604	Middle Big Sandy Creek
Lower Cheat River	Cheat	050200040603	Beaver Creek-Little Sandy Creek
Elk Headwaters	Elk	050500070101	Old Field Fork
Elk Headwaters	Elk	050500070102	Dry Fork-Elk River
Elk Headwaters	Elk	050500070103	Abb Run-Elk River
Elk Headwaters	Elk	050500070104	Sugar Creek
Elk Headwaters	Elk	050500070106	Bergoo Creek-Elk River
Upper Meadow River	Gauley	050500050601	Little Clear Creek
Upper Meadow River	Gauley	050500050602	Otter Creek-Meadow River
Upper Meadow River	Gauley	050500050603	Big Clear Creek
Upper Meadow River	Gauley	050500050604	Sewell Creek
Upper Meadow River	Gauley	050500050605	Mill Creek-Meadow River
Knapp Creek	Greenbrier	50500030201	Douthat Creek
Knapp Creek	Greenbrier	50500030202	Headwaters Knapp Creek
Knapp Creek	Greenbrier	50500030203	Outlet Knapp Creek
Milligan Creek/Davis Springs	Greenbrier	050500030903	Milligan Creek-Greenbrier River
Muddy Creek (Greenbrier)	Greenbrier	050500030802	Kitchen Creek
Muddy Creek (Greenbrier)	Greenbrier	050500030803	Mill Creek

Muddy Creek (Greenbrier)	Greenbrier	050500030804	Muddy Creek
Second Creek	Greenbrier	050500030701	Upper Second Creek
Second Creek	Greenbrier	050500030703	Lower Second Creek
South Fork Potts Creek	James	020802010401	South Fork Potts Creek-North Fork Potts Creek
South Fork Potts Creek	James	020802010301	Sweet Springs Creek-Cove Creek
Wolf Creek	Lower New	050500030904	Wolf Creek
Wolf Creek	Lower New	050500040304	Wolf Creek-New River
Deckers Creek	Monongahela	050200030201	Headwaters Deckers Creek
Deckers Creek	Monongahela	050200030202	Outlet Deckers Creek
West Run	Monongahela	050200030309	West Run-Monongahela River
Back Creek	Potomac Direct Drains	020700040404	Brush Creek-Back Creek
Back Creek	Potomac Direct Drains	020700040405	Babbs Run
Back Creek	Potomac Direct Drains	020700040406	Warm Springs Hollow-Back Creek
Back Creek	Potomac Direct Drains	020700040407	Elk Branch-Back Creek
Back Creek	Potomac Direct Drains	020700040408	Tilhance Creek
Back Creek	Potomac Direct Drains	020700040409	Outlet Back Creek
Elks Run	Potomac Direct Drains	020700041107	Elks Run
Mill Creek (Opequon)	Potomac Direct Drains	20700040905	Mill Creek
Sleepy Creek	Potomac Direct Drains	020700040201	Upper Sleepy Creek
Sleepy Creek	Potomac Direct Drains	020700040202	Middle Fork Sleepy Creek
Sleepy Creek	Potomac Direct Drains	020700040203	Middle Sleepy Creek
Sleepy Creek	Potomac Direct Drains	020700040204	Meadow Branch
Sleepy Creek	Potomac Direct Drains	020700040205	Lower Sleepy Creek
Tuscarora Creek	Potomac Direct Drains	020700040907	Tuscarora Creek
Mill Creek (SB Potomac)	South Branch Potomac	020700010401	South Mill Creek
Mill Creek (SB Potomac)	South Branch Potomac	020700010402	Johnson Run-Mill Creek
North Fork Elkhorn	Tug Fork	050702010202	Headwaters Elkhorn Creek
Roaring Creek (Tygart Valley)	Tygart Valley	050200010406	Roaring Creek
Sandy Creek (Tygart Valley)	Tygart Valley	050200010501	Little Sandy Creek
Sandy Creek (Tygart Valley)	Tygart Valley	050200010502	Left Fork-Sandy Creek
Upper Buckhannon	Tygart Valley	050200010301	Left Fork Buckhannon River
Upper Buckhannon	Tygart Valley	050200010302	Right Fork Buckhannon River
Upper Buckhannon	Tygart Valley	050200010303	French Creek
Upper Buckhannon	Tygart Valley	050200010304	Tenmile Creek-Buckhannon River
Upper Buckhannon	Tygart Valley	050200010305	Sand Run
Upper Buckhannon	Tygart Valley	050200010306	Fink Run-Buckhannon River
Upper Buckhannon	Tygart Valley	050200010307	Pecks Run-Buckhannon River
Upper Guyandotte	Upper Guyandotte	050701010101	Tommy Creek
Upper Guyandotte	Upper Guyandotte	050701010102	Slab Fork

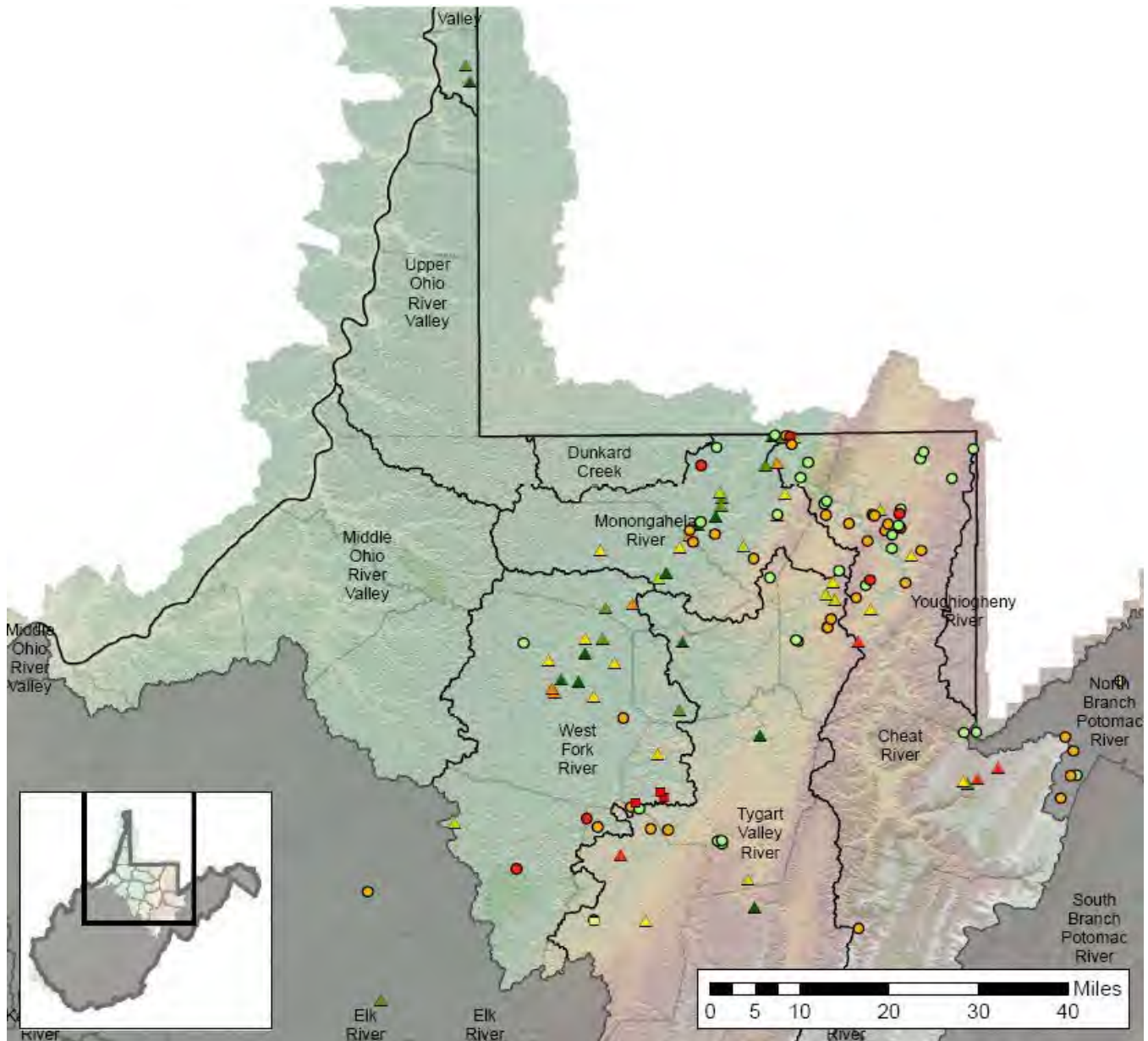
Upper Guyandotte	Upper Guyandotte	050701010103	Devils Fork-Guyandotte River
Upper Guyandotte	Upper Guyandotte	050701010301	Barkers Creek
Upper Guyandotte	Upper Guyandotte	050701010302	Pinnacle Creek
Upper Guyandotte	Upper Guyandotte	050701010303	Cabin Creek-Guyandotte River
Morris Creek	Upper Kanawha	050500060306	Hughes Creek-Kanawha River
Piney Creek	Upper New	050500040101	Beaver Creek
Piney Creek	Upper New	050500040102	Headwaters Piney Creek
Piney Creek	Upper New	050500040103	Outlet Piney Creek
Lamberts Run	West Fork	50200020602	Limestone Run-West Fork River

Appendix 2 – OAML and SRP Project Maps

Potomac



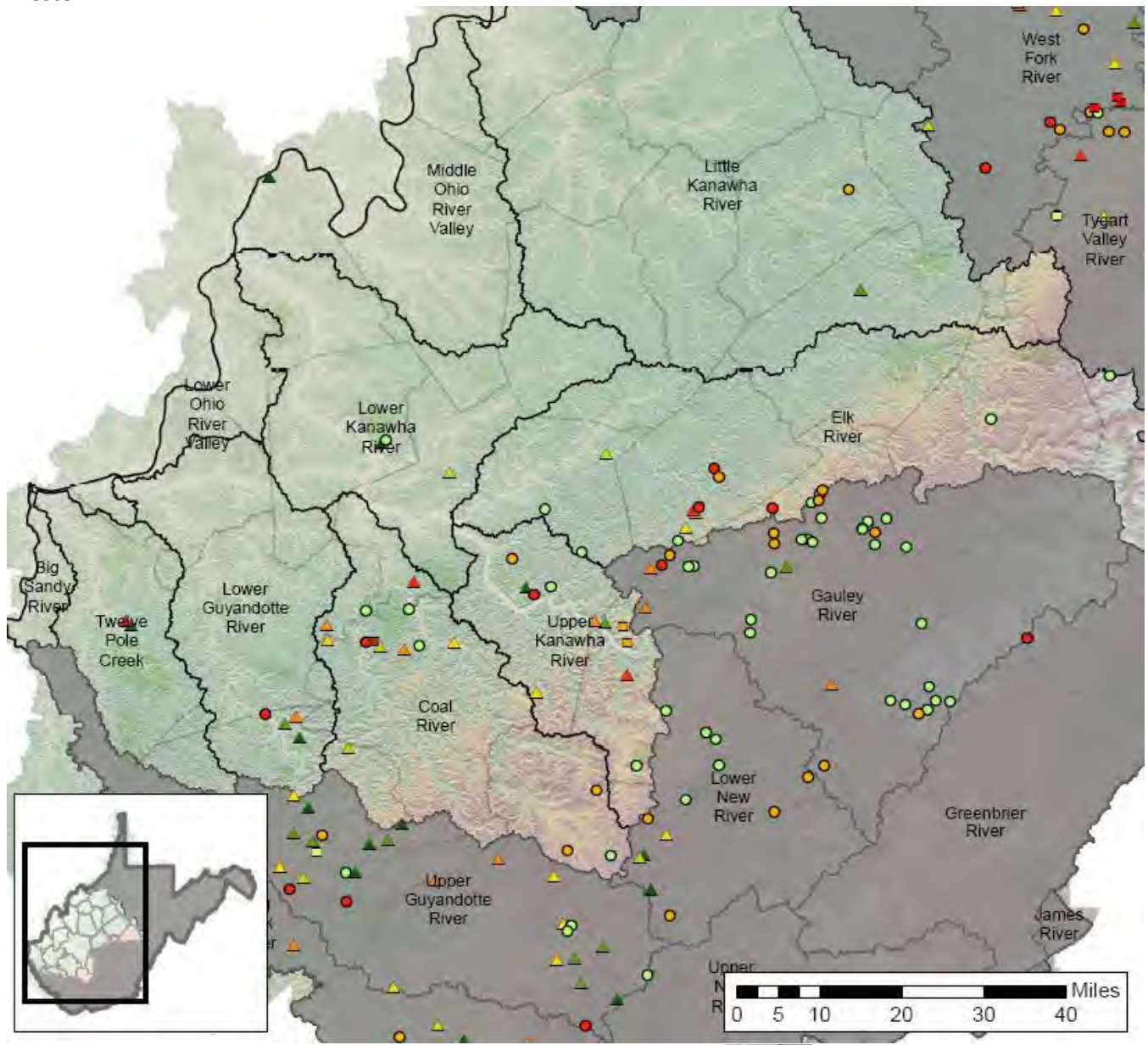
Northern



Northern Basin Upcoming Reclamation Projects

Special Reclamation (Land)	AML (Projected Construction Year)	Major Watersheds
2014	2013	County Boundary
2015	2014	Elevation (m)
2016	2015	- High : 1641.13
2025	2016	- Low : 1
Special Reclamation (Water)	2017	
2014	2018	
2015		
2016		

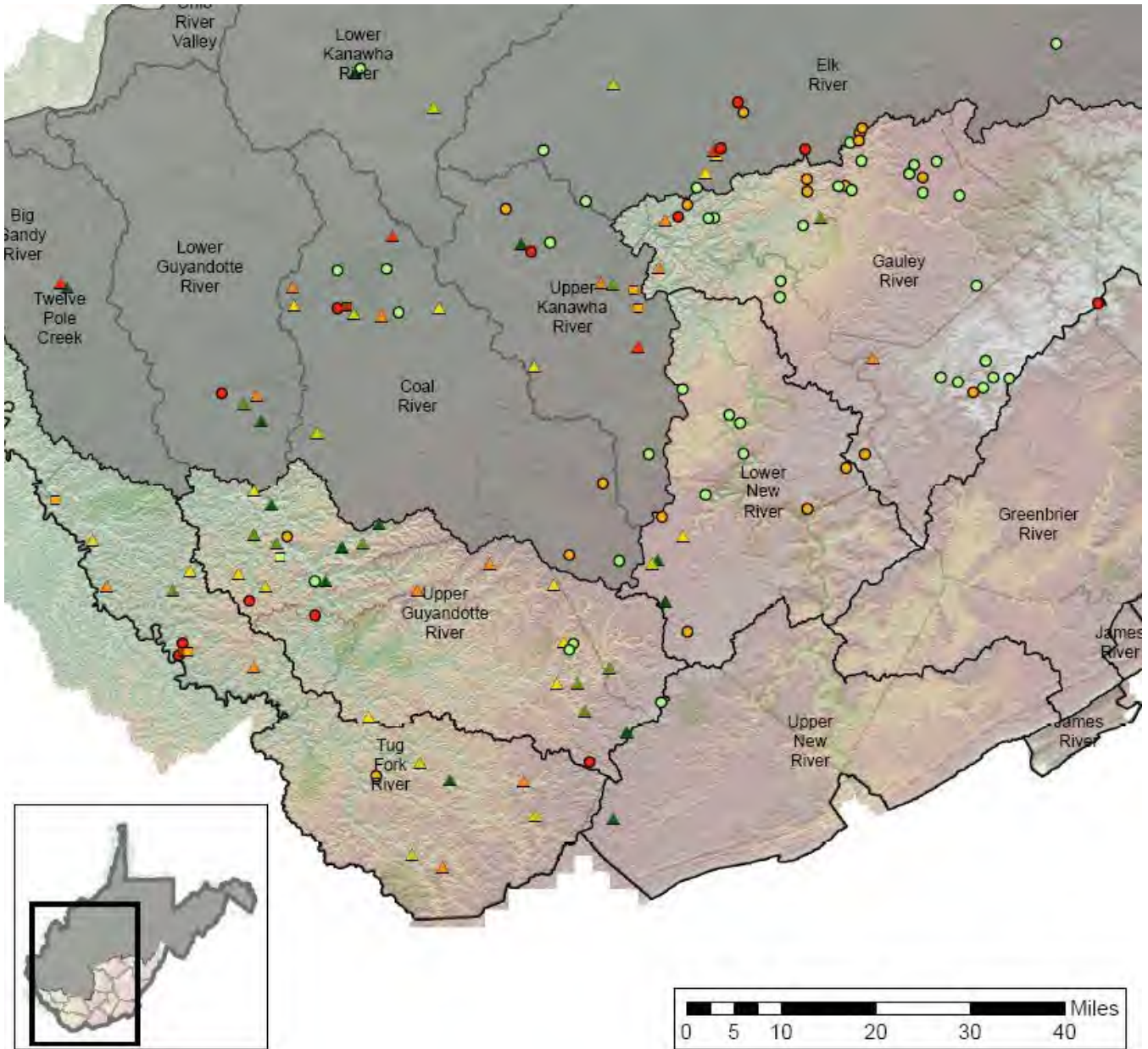
Western



Western Basin Upcoming Reclamation Projects

Special Reclamation (Land)	AML (Projected Construction Year)	Major Watersheds
2014	2013	County Boundary
2015	2014	Elevation (m)
2016	2015	- High : 1641.13
2025	2016	- Low : 1
Special Reclamation (Water)	2017	
2014	2018	
2015		
2016		

Southern



Southern Basin Upcoming Reclamation Projects

Special Reclamation (Land)	AML (Projected Construction Year)	Major Watersheds
■ 2014	▲ 2013	□ County Boundary
■ 2015	▲ 2014	Elevation (m)
■ 2016	▲ 2015	· High : 1641.13
■ 2025	▲ 2016	· Low : 1
Special Reclamation (Water)	▲ 2017	
● 2014	▲ 2018	
● 2015		
● 2016		

Appendix 3 – OAML and SRP HUC/Project information

Abandoned Minelands

PAD#	Year	PADNAME	HUC8	HUC12	HU_12_NAME
WV003918	2013	MACARTHUR SUBSIDENCE	5050004	50500040102	Headwaters Piney Creek
WV000183	2013	EAST LYNN II	5090102	50901020204	Lower East Fork Twelvemile Creek
WV001725	2013	VALLEY FALLS PORTALS	5020001	50200010708	Lost Run-Tygart Valley River
WV003205	2013	RIDENOUR COMPLEX	5020003	50200030309	West Run-Monongahela River
WV000336	2013	FISHER PORTALS	5020002	50200020602	Limestone Run-West Fork River
WV001535	2013	BISHOP PORTALS	5020003	50200030307	Cobun Creek-Monongahela River
WV006020	2013	WITCHER CREEK PORTALS AND REFUSE	5050006	50500060401	Witcher Creek
WV000288	2013	WEST COLUMBIA ""B""	5030202	50302020805	Broad Run-Ohio River
WV006242	2013	STOWE REFUSE PILE	5070101	50701010505	Buffalo Creek
WV000647	2013	MILAM RIDGE REFUSE PILE	5070101	50701010301	Barkers Creek
WV006165	2013	MALLORY (GIBSON) PORTALS	5070101	50701010504	Huff Creek
WV000627	2013	FLIPPING HOLLOW COMPLEX	5050002	50500020903	Laurel Fork-Bluestone River
WV003935	2013	NORTON HIGHWALL 1	5020001	50200010406	Roaring Creek
WV006283	2013	MOATSVILLE (WRIGHT) PORTALS AND DRAINAGE	5020001	50200010705	Hackers Creek-Tygart Valley River
WV005914	2013	WHEATLEY BRANCH (LUTHY) PORTALS	5070102	50701020101	Big Creek
WV004801	2013	GORE CLOGGED STREAM	5020002	50200020602	Limestone Run-West Fork River
WV000660	2013	INDIAN CREEK REFUSE PILE	5070201	50702010204	Sandlick Creek-Tug Fork
WV005350	2013	BRAEHOLM (EVANS) PORTALS & DRAINAGE	5070101	50701010505	Buffalo Creek
WV000993	2013	ABNEY REFUSE PILES	5050004	50500040102	Headwaters Piney Creek
WV005645	2013	COLLIERS SPORTSMAN CLUB HIGHWALL	5030101	50301010902	South Fork Cross Creek
WV005184	2013	STOLLINGS (WHITE) PORTALS	5070101	50701010508	Dingess Run-Guyandotte River
WV002151	2013	JEEP TRAIL PORTALS	5050008	50500080204	Heizer Creek
WV005916	2013	WEST FORK RIVER OPEN PORTALS	5020002	50200020602	Limestone Run-West Fork River
WV002448	2013	HILDERBRAND HIGHWALL	5020003	50200030307	Cobun Creek-Monongahela River
WV006486	2013	FAIRMONT (JACKSON ADDITION) SUBSIDENCE	5020003	50200030103	Outlet Buffalo Creek
WV001622	2014	ALBERT HIGHWALL #1	5020004	50200040203	Lower Blackwater River
WV006308	2014	AMIGO PORTALS	5070101	50701010103	Devils Fork-Guyandotte River
WV004811	2014	BLACK EAGLE REFUSE PILE	5070101	50701010103	Devils Fork-Guyandotte River
WV006513	2014	DAVIDSON HIGHWALL DRAINAGE	5020003	50200030309	West Run-Monongahela River
WV003960	2014	EBENEZER RUN HIGHWALL #9	5030101	50301010902	South Fork Cross Creek
WV002746	2014	GRAFTON #4	5020002	50200020401	Headwaters Simpson Creek
WV004080	2014	LANDO (EDWARDS) DRAINAGE	5070201	50702010401	Headwaters Pigeon Creek
WV001167	2014	LAUREL POINT STRIP	5020003	50200030308	Scotts Run-Monongahela River

WV006532	2014	LYBURN (MAYNARD) DRAINAGE	5070101	50701010507	Rum Creek-Guyandotte River
WV000871	2014	MARSH RUN PORTALS	5030203	50302030401	Headwaters Cedar Creek
WV001903	2014	MONTECARLO COMPLEX	5070101	50701010301	Barkers Creek
WV006561	2014	MOUNT UNION (STUMP)	5020003	50200030309	West Run-Monongahela River
WV000122	2014	ROBINETTE BRANCH	5070101	50701010505	Buffalo Creek
WV006037	2014	RT. 60 DRAINAGE	5050006	50500060304	Boomer Branch-Kanawha River
WV006236	2014	SUGARCAMP RUN BURNING REFUSE	5050005	50500050806	Headwaters Peters Creek
WV006216	2014	SWITZER (ELLIS) DRAINAGE	5070101	50701010402	Island Creek
WV005207	2014	VICKERS BRANCH (BUTCHER) DRAINAGE	5070102	50701020101	Big Creek
WV002449	2014	WAITMAN-BARBE HIGHWALL #1	5020003	50200030307	Cobun Creek-Monongahela River
WV006523	2014	WEST FORK RAIL TRAIL PORTALS	5020002	50200020604	Coons Run-West Fork River
WV006273	2014	WILLARD (SNYDER) PORTAL AND AMD	5020002	50200020602	Limestone Run-West Fork River
WV001141	2015	BEULAH CHAPEL PORTAL	5020003	50200030202	Outlet Deckers Creek
WV006492	2015	BROAD RUN PORTALS	5050007	50500070906	Morris Creek-Elk River
WV006109	2015	CAMDEN (HARTLEY) DANGEROUS SLIDE	5020002	50200020301	Freemans Creek
WV006007	2015	CAMP CREEK (KIRK) PORTALS	5050009	50500090502	Upper Little Coal River
WV006522	2015	CITY OF WAR MINE PORTALS	5070201	50702010104	Middle Dry Fork
WV005088	2015	CONLEY BRANCH (WHITT) LANDSLIDE	5070101	50701010402	Island Creek
WV005739	2015	CRAB ORCHARD (ACKLIN) PORTALS	5050004	50500040102	Headwaters Piney Creek
WV002190	2015	DONNIE THORN HIGHWALL	5020001	50200010601	Headwaters Three Fork Creek
WV006388	2015	FAIRMONT (DAC) S, CS AND P	5020003	50200030305	Little Creek-Monongahela River
WV001744	2015	HOPEWELL CHURCH REFUSE & DRAINAGE	5020001	50200010601	Headwaters Three Fork Creek
WV003731	2015	LILBERN PRITT HIGHWALL	5020001	50200010407	Mill Creek-Tygart Valley River
WV000728	2015	LITTLE DAYCAMP BRANCH REFUSE PILE	5070201	50702010205	Spice Creek-Tug Fork
WV006450	2015	Morgantown (Anderson) Portals and Highwalls	5020003	50200030308	Scotts Run-Monongahela River
WV001140	2015	OWL CREEK #2 HIGHWALL	5020003	50200030306	Booths Creek
WV004927	2015	PAGETON ""LAMBERT"" PORTALS	5070201	50702010201	South Fork Tug Fork-Tug Fork
WV002287	2015	PIGTAIL BRANCH DRAINAGE	5050009	50500090303	Outlet Spruce Fork
WV006488	2015	SOVERN RUN (ENGLAND) REFUSE AND PORTALS	5020004	50200040605	Lower Big Sandy Creek
WV005254	2015	Wolfpen (Carpenter) Portals	5050008	50500080201	Tupper Creek
WV006091	2016	BICKMORE AREA COMPLEX	5050007	50500070901	Leatherwood Creek-Elk River
WV006395	2016	BLOOMINGROSE (MILLER) DRAINAGE	5050009	50500090604	Drawdy Creek-Big Coal River
WV000267	2016	COAL BRANCH	5070102	50701020102	Crawley Creek-Guyandotte River
WV006482	2016	Cow Creek (Browning) Portals	5070101	50701010402	Island Creek
WV000002	2016	DAVIS COAL & COKE	5020004	50200040203	Lower Blackwater River
WV006584	2016	GLEN ROGERS MINE SHAFTS	5070101	50701010201	Laurel Fork
WV006524	2016	INDORE (OSBORNE) PORTALS	5050007	50500070902	Sycamore Creek-Elk River

WV006286	2016	ITMANN (BURDISS) DRAINAGE	5070101	50701010303	Cabin Creek-Guyandotte River
WV001884	2016	LARRY FREDRICK HIGHWALL & REFUSE	5020002	50200020504	Outlet Tenmile Creek
WV001206	2016	LAUREL RUN #3	5020003	50200030103	Outlet Buffalo Creek
WV005631	2016	LEFT FORK OF ELK CREEK AIR SHAFT	5070201	50702010401	Headwaters Pigeon Creek
WV001820	2016	LICK RUN PORTAL #4	5020004	50200040702	Pringle Run-Cheat River
WV005637	2016	LITTLE WHITESTICK CREEK REFUSE PILE	5050004	50500040103	Outlet Piney Creek
WV006506	2016	LODGEVILLE (POE) DS	5020002	50200020402	Outlet Simpson Creek
WV003940	2016	LAKE LYNN COMPLEX	5020004	50200040707	Cheat Lake-Cheat River
WV005289	2016	MCALPIN PORTALS & DRAINAGE	5020002	50200020602	Limestone Run-West Fork River
WV003007	2016	MORGAN HIGHWALL #46	5020004	50200040704	Roaring Creek-Cheat River
WV005721	2016	MORRISVALE (HOLESTIN) PORTALS	5050009	50500090501	Big Horse Creek
WV001111	2016	MUDLICK PORTALS	5070101	50701010501	Little Huff Creek
WV001200	2016	PARKER RUN #1	5020003	50200030305	Little Creek-Monongahela River
WV005057	2016	PEPPER PORTALS AND DRAINAGE	5020002	50200020203	Brushy Fork
WV000932	2016	PIERPONT REFUSE PILE	5070101	50701010102	Slab Fork
WV002272	2016	RED WARRIOR GOB AND SLIDE	5050006	50500060201	Headwaters Cabin Creek
WV001675	2016	SHINNS RUN PORTALS	5020002	50200020602	Limestone Run-West Fork River
WV005758	2016	SQUIRES CREEK REFUSE & PORTALS	5020001	50200010601	Headwaters Three Fork Creek
WV006553	2016	Tallmansville (Anderson) Portals	5020001	50200010304	Tenmile Creek-Buckhannon River
WV006268	2016	TYRONE (STIMMELL) PORTALS	5020003	50200030202	Outlet Deckers Creek
WV005452	2016	OLDFIELD BRANCH (HALL) DRAINAGE	5070201	50702010506	Miller Creek-Tug Fork
WV000074	2017	ALKOL PORTALS	5050009	50500090501	Big Horse Creek
WV001981	2017	BIG CREEK COMPLEX	5050005	50500050809	Rich Creek-Gauley River
WV006586	2017	Booths Creek (Browning Farm) Mines	5020002	50200020603	Booths Creek
WV002202	2017	BURDETTE COMPLEX	5050005	50500050606	Meadow Creek-Meadow River
WV000064	2017	CAMBRIA (NICHOLAS CO.) PORTALS	5050005	50500050702	Outlet Twentymile Creek
WV000084	2017	CANYON REFUSE	5020004	50200040707	Cheat Lake-Cheat River
WV006585	2017	CHATTAROY (KIRK) PORTALS	5070201	50702010506	Miller Creek-Tug Fork
WV001897	2017	CRANY MINE DUMP	5070101	50701010202	Headwaters Clear Fork
WV000600	2017	CUCUMBER AIRSHAFT	5070201	50702010102	Jacobs Fork
WV000841	2017	GLEN ALUM COMPLEX	5070201	50702010303	Long Branch-Tug Fork
WV000415	2017	GLEN AVENUE MINE DRAINAGE	5020002	50200020602	Limestone Run-West Fork River
WV000673	2017	LANDGRAFF REFUSE PILE	5070201	50702010203	Outlet Elkhorn Creek
WV005578	2017	Montgomery (WVUIT) Landslide	5050006	50500060306	Hughes Creek-Kanawha River
WV004150	2017	MAURIN MINE FIRE AND PORTALS	5020003	50200030305	Little Creek-Monongahela River
WV006512	2017	NORTH FORK (SPRY) DRAINAGE	5070102	50701020101	Big Creek
WV000939	2017	OLDHOUSE BRANCH REFUSE PILE	5070101	50701010203	Outlet Clear Fork

WV006508	2017	Perry Hollow Posey Portals and Dr	5020002	50200020602	Limestone Run-West Fork River
WV006349	2017	Ridgeview (Dunlap) Portals	5050009	50500090604	Drawdy Creek-Big Coal River
WV002052	2018	BICKMORE REFUSE #2 - Site 1	5050007	50500070901	Leatherwood Creek-Elk River
WV002127	2018	CHAFFEY RUN STRIP	5020004	50200040202	Middle Blackwater River
WV006575	2018	EAST LYNN (CLARK) PORTALS	5090102	50901020204	Lower East Fork Twelvemile Creek
WV003182	2018	ED GOWER HIGHWALL #2	5020001	50200010306	Fink Run-Buckhannon River
WV001258	2018	MEADOW FORK OPEN PORTALS	5050009	50500090605	Brier Creek
WV001808	2018	MOUNTAIN VIEW PORTALS	5020004	50200040702	Pringle Run-Cheat River
WV002128	2018	PENDLETON CREEK STRIP	5020004	50200040202	Middle Blackwater River
WV005846	2018	ROBSON (CALES) DRAINAGE	5050006	50500060301	Loop Creek

Special Reclamation (Water)

COMPANY	PERMIT	ACRES	COUNTY	SPREC_ACRE	YEAR	HUC8	HUC12	HU12_NAME
PUPS CREEK COALS, INC.	S-3006-94	221.31	Raleigh	90	2014	5050009	50500090201	Stephens Lake
WERNER MINING CO., INC.	S-2003-86	43	Barbour	43	2014	5020001	50200010408	Laurel Run-Tygart Valley River
CHICOPEE COAL COMPANY, INC.	S-3006-99	257.41	Nicholas	25	2014	5050005	50500050702	Outlet Twentymile Creek
GREEN MOUNTAIN ENERGY	U-4013-91	15.23	Wyoming	12	2014	5070101	50701010102	Slab Fork
LAKEVIEW COAL COMPANY	S-55-84	27	Monongalia	0	2014	5020004	50200040707	Cheat Lake-Cheat River
B & S CONTRACTING, INC.	U-3055-87	10	Nicholas	10	2014	5050005	50500050803	Outlet Muddlety Creek
BUFFALO COAL COMPANY, INC.	S-2003-03	266	Grant	60	2014	2070002	20700020202	Mount Storm Lake-Stony River
INTER-STATE LUMBER COMPANY, INC.	S-112-80	100	Preston	103	2014	5020004	50200040706	Bull Run-Cheat River
M & T MINING CO.	S-3026-89	171	Nicholas	114	2014	5050005	50500050803	Outlet Muddlety Creek
BELLE CONTRACTING, INC.	S-6020-87	108	Putnam	0	2014	5050008	50500080204	Heizer Creek
ROYAL COAL CO.	P-688	57	Fayette	33	2014	5050004	50500040303	Arbuckle Creek-New River
ROYAL COAL CO.	R-676	30	Fayette	30	2014	5050004	50500040303	Arbuckle Creek-New River
CRADDOCK & SON COAL CO.	S-68-83	94	Nicholas	45	2014	5050005	50500050806	Headwaters Peters Creek
BUFFALO COAL COMPANY, INC.	S-122-80	306	Tucker	78.5	2014	2070002	20700020201	Shields Run-North Branch Potomac River
VMS, LTD.	S-1045-87	162	Monongalia	40	2014	5020001	50200010601	Headwaters Three Fork Creek
STEWARTOWN COAL CORP.	67-78	80	Monongalia	4	2014	5020003	50200030309	West Run-Monongahela River
HUNT COAL, INC.	U-5071-86	10	Logan	10	2014	5070101	50701010506	Elk Creek-Guyandotte River
HIDDEN VALLEY COAL CO.	S-60-84	47	Preston	47	2014	5020004	50200040603	Beaver Creek-Little Sandy Creek
MOHIGAN MINING CO.	U-109-83	18	Monongalia	23	2014	5020003	50200030307	Cobun Creek-Monongahela River
B & S CONTRACTING, INC.	R-668	26	Nicholas	27	2014	5050005	50500050802	Headwaters Muddlety Creek
VALLEY MINING CO., INC.	S-17-82	62	Monongalia	5	2014	5020003	50200030202	Outlet Deckers Creek
E. J. & L. CO., INC.	S-3041-87	50	Raleigh	11	2014	5050004	50500040103	Outlet Piney Creek
PRINCESS CINDY MINING, INC.	30-79	137	Fayette	137	2014	5050006	50500060301	Loop Creek
PRINCESS SUSAN COAL CO.	S-6-85	216	Kanawha	0	2014	5050006	50500060305	Kellys Creek

ROYAL SCOT MINERALS, INC.	S-90-82	154	Greenbrier	75	2014	5050005	50500050601	Little Clear Creek
KEISTER COAL COMPANY, INC.	184-77	27	Barbour	13	2014	5020001	50200010408	Laurel Run-Tygart Valley River
LANDMARK CORPORATION	S-34-82	95	Boone	22	2014	5050009	50500090503	Lower Little Coal River
LODESTAR ENERGY, INC.	R-5-84	34	Wyoming	0	2014	5070101	50701010102	Slab Fork
VIKING COAL COMPANY	UO-519	10.92	Preston	10.92	2014	5020004	50200040703	Muddy Creek
PRINCESS SUSAN COAL CO.	S-6033-86	200	Kanawha	4	2014	5050006	50500060305	Kellys Creek
VALLEY MINING CO., INC.	S-64-83	160	Monongalia	161	2014	5020004	50200040707	Cheat Lake-Cheat River
ROYAL SCOT MINERALS, INC.	U-3046-88	26.4	Greenbrier	32	2014	5050005	50500050605	Mill Creek-Meadow River
TRIPLE A COALS, INC.	U-3046-87	25	Nicholas	20	2014	5050005	50500050801	Big Beaver Creek
ROYAL SCOT MINERALS, INC.	R-3078-86	30	Greenbrier	30	2014	5050005	50500050601	Little Clear Creek
ENERGY MARKETING COMPANY INC	O-44-83	71	Barbour	40	2014	5020001	50200010307	Pecks Run-Buckhannon River
LILLYBROOK COAL CO.	S-86-85	34	Raleigh	27	2014	5070101	50701010103	Devils Fork-Guyandotte River
TRIPLE A COALS, INC.	S-3028-87	121	Nicholas	124	2014	5050005	50500050801	Big Beaver Creek
CRANE COAL CO., INC.	S-27-83	8	Preston	8	2014	5020004	50200040703	Muddy Creek
BOLINGREEN MINING COMPANY	S-1024-88	21	Preston	16	2014	5020004	50200040705	Greens Run-Cheat River
ROYAL SCOT MINERALS, INC.	S-65-76	160	Greenbrier	19	2014	5050005	50500050603	Big Clear Creek
GLADE RUN MINING CO.	3-72	50	Grant	50	2014	2070002	20700020204	Abram Creek
EASTERN ENERGY INVESTS.	U-6012-88	5.35	Boone	2.5	2014	5050009	50500090606	Fork Creek-Big Coal River
HARVEY ENERGY CORP.	S-11-82	41	Fayette	25	2014	5050004	50500040303	Arbuckle Creek-New River
W & E LOGGING & COAL	S-20-82	70	Nicholas	50	2014	5050005	50500050801	Big Beaver Creek
FALCON LAND COMPANY, INC.	P-656	132	Nicholas	0	2014	5050005	50500050403	Laurel Creek
SOLITAIRE COAL CORPORATION, INC.	S-87-85	138	Webster	85	2014	5050007	50500070302	Headwaters Right Fork Holly River
DUSTY COALS, INC.	S-119-85	71	Nicholas	31	2014	5050005	50500050801	Big Beaver Creek
KODIAK LAND CO., INC.	S-3052-87	32	Fayette	2	2014	5050005	50500050805	Summersville Lake-Gauley River
JONES COAL INC	S-9-83	46	Preston	46	2014	5020004	50200040604	Middle Big Sandy Creek
HARVEY ENERGY CORP.	S-3030-89	44	Fayette	44	2014	5050006	50500060101	Packs Branch-Paint Creek
DECONDOR COAL CO.	U-147-82	7.25	Preston	7.25	2014	5020003	50200030201	Headwaters Deckers Creek
BENHAM GROUP, LTD.	120-79	180	Boone	93	2014	5050009	50500090604	Drawdy Creek-Big Coal River
BUFFALO COAL COMPANY, INC.	S-2011-92	59	Preston	12	2014	5020004	50200040501	Horseshoe Run
LEVEL LAND MINING CORPORATION	S-3031-90	24	Fayette	24	2014	5050005	50500050609	Glade Creek-Meadow River
MAURICE JENNINGS	S-61-83	52	Preston	9	2014	5020001	50200010602	Outlet Three Fork Creek
ROYAL SCOT MINERALS, INC.	56-81	300	Greenbrier	40	2014	5050005	50500050603	Big Clear Creek
MORGANTOWN ENERGY EXPORT COMPANY	U-8-83	12	Monongalia	12	2014	5020003	50200030308	Scotts Run-Monongahela River
BJORKMAN MINING CO.	S-37-81	35	Preston	35	2014	5020004	50200040702	Pringle Run-Cheat River
MOUNTAINEER FUELS, INC.	U-3083-87	10	Nicholas	10	2014	5050005	50500050801	Big Beaver Creek
CHICOPEE COAL COMPANY, INC.	O-6013-88	124.55	Clay	63	2014	5050007	50500070902	Sycamore Creek-Elk River
ROYAL SCOT MINERALS, INC.	S-99-83	11	Greenbrier	6	2014	5050005	50500050603	Big Clear Creek

MAURICE JENNINGS	53-78	65	Preston	8	2014	5020001	50200010501	Little Sandy Creek
GLORY COAL CO., INC.	UO-744	3	Harrison	1	2014	5020002	50200020503	Little Tenmile Creek
TRIPLE A COALS, INC.	S-96-85	262	Nicholas	26	2014	5050005	50500050801	Big Beaver Creek
BLACK DIAMOND MINING CO.	13-79	34	Nicholas	31	2014	5050005	50500050803	Outlet Muddlety Creek
ZINN COAL CO.	60-79	75	Preston	10	2014	5020004	50200040603	Beaver Creek-Little Sandy Creek
WETER CO.	S-71-79	56	Preston	57	2014	5020004	50200040706	Bull Run-Cheat River
JONES COAL INC	S-1030-86	23	Preston	23	2014	5020004	50200040604	Middle Big Sandy Creek
EASTERN ENERGY INVEST.	S-6029-86	297	Kanawha	0	2014	5050007	50500070908	Coopers Creek-Elk River
CHICOPEE COAL COMPANY, INC.	S-3002-98	124.52	Nicholas	35	2014	5050005	50500050702	Outlet Twentymile Creek
NATIONAL CONSTRUCTION COMPANY, INC.	S-2004-86	54	Barbour	5	2014	5020001	50200010408	Laurel Run-Tygart Valley River
BOOMERANG COAL, INC.	S-2015-06	10	Randolph	8	2014	5050007	50500070104	Sugar Creek
T & T FUELS, INC.	U-125-83	14	Preston	14	2014	5020004	50200040703	Muddy Creek
S. KELLY INDUSTRIES	51-78	40	Monongalia	40	2015	5020003	50200030306	Booths Creek
BALDWIN MINING COMPANY	D-75-82	9.62	Gilmer	9	2015	5030203	50302030308	Stewart Creek-Little Kanawha River
BORGMAN COAL CO.	EM-32	6	Preston	9	2015	5020004	50200040702	Pringle Run-Cheat River
STAR INDUSTRIES, INC.	R-3-81	38	Raleigh	38	2015	5050004	50500040103	Outlet Piney Creek
LODESTAR ENERGY, INC.	S-3006-89	122.79	Nicholas	34	2015	5050007	50500070501	Headwaters Buffalo Creek
SAN SUE COAL CO.	19-75	14	Nicholas	14	2015	5050005	50500050803	Outlet Muddlety Creek
FARKAS COAL CO.	34-81	10	Monongalia	10	2015	5020004	50200040707	Cheat Lake-Cheat River
BUFFALO COAL COMPANY, INC.	S-2001-86	595	Grant	26	2015	2070002	20700020202	Mount Storm Lake-Stony River
C. C. CONLEY & SONS, INC.	S-3046-91	195	Nicholas	15	2015	5050005	50500050806	Headwaters Peters Creek
DAUGHERTY COAL COMPANY, INC.	65-77	92	Preston	92	2015	5020004	50200040705	Greens Run-Cheat River
INTER-STATE LUMBER COMPANY, INC.	176-77	110	Preston	57	2015	5020004	50200040704	Roaring Creek-Cheat River
ROBLEE COAL COMPANY	U-2001-00	9.19	Upshur	2	2015	5020002	50200020303	Hackers Creek
ENERGY MARKETING CO. INC.	U-72-83	21.16	Barbour	18.61	2015	5020002	50200020201	Gnatty Creek
FRUSH ENTERPRISES, INC.	S-1008-89	76	Harrison	86	2015	5020002	50200020401	Headwaters Simpson Creek
LAROSA FUEL CO., INC.	S-1051-86	196.79	Marion	6	2015	5020003	50200030305	Little Creek-Monongahela River
CLASSIC RES., INC.	S-55-81	20	Fayette	15	2015	5050005	50500050604	Sewell Creek
JOHN GALT	D-76-82	8	Logan	4	2015	5070101	50701010507	Rum Creek-Guyandotte River
BARRETT FUEL CORP.	R-737	175	Raleigh	79.95	2015	5050009	50500090101	Headwaters Clear Fork
INTER-STATE LUMBER COMPANY, INC.	S-52-83	48	Preston	20	2015	5020001	50200010602	Outlet Three Fork Creek
CHEYENNE SALES COMPANY, INC.	O-11-83	22.1	Upshur	22.1	2015	5020001	50200010307	Pecks Run-Buckhannon River
CHEYENNE SALES CO., INC.	S-2009-96	48.28	Upshur	40.2	2015	5020001	50200010307	Pecks Run-Buckhannon River
TEMPLEMAN CONST. CO., INC.	151-75	25	Kanawha	25	2015	5050006	50500060404	Campbells Creek
THE MASTELLER COAL COMPANY	S-10-85	142	Mineral	122	2015	2070002	20700020207	Piney Swamp Run-North Branch Potomac River
ROCKVILLE MINING CO.	S-65-82	475	Preston	310	2015	5020004	50200040703	Muddy Creek
F & M COAL CO.	S-1026-87	167	Preston	167	2015	5020004	50200040705	Greens Run-Cheat River

INTER-STATE LUMBER COMPANY, INC.	S-39-82	31	Preston	4	2015	5020001	50200010602	Outlet Three Fork Creek
SMITH & STOVER	EM-29	25	Raleigh	25	2015	5050004	50500040102	Headwaters Piney Creek
LODESTAR ENERGY, INC.	S-3083-86	74	Nicholas	8.5	2015	5050005	50500050802	Headwaters Muddlety Creek
ROCKVILLE MINING CO.	65-78	158	Preston	145	2015	5020004	50200040703	Muddy Creek
ROCKVILLE MINING CO.	S-1035-86	120	Preston	93	2015	5020004	50200040605	Lower Big Sandy Creek
Z & F DEVELOPMENT CO.	S-21-84	28	Monongalia	28	2015	5020003	50200030304	Whiteday Creek
BUFFALO COAL COMPANY, INC.	S-53-80	375	Grant	115	2015	2070002	20700020202	Mount Storm Lake-Stony River
MERIDAN OF VIRGINIA, INC.	S-4005-89	99	McDowell	6	2015	5070201	50702010105	Lower Dry Fork
HARVEY ENERGY CORP.	S-35-81	22	Fayette	22	2015	5050004	50500040204	Meadow Creek
J.A.L. COAL CO., INC.	S-23-82	40	Monongalia	2	2015	5020003	50200030303	Indian Creek
JOCARR RESOURCES, INC.	U-3059-86	10	Nicholas	12	2015	5050005	50500050806	Headwaters Peters Creek
GREENDALE COALS, INC.	S-75-83	224	Clay	200	2015	5050005	50500050702	Outlet Twentymile Creek
F & M COAL CO.	46-79	130	Preston	116	2015	5020004	50200040704	Roaring Creek-Cheat River
J & N PROCESSING COMPANY, LLC	O-58-83	202.9	Raleigh	195	2015	5050009	50500090202	Upper Marsh Fork
INTER-STATE LUMBER COMPANY, INC.	S-96-82	25	Preston	7	2015	5020001	50200010601	Headwaters Three Fork Creek
EDWARD E. THOMPSON	S-1041-89	26	Monongalia	4	2015	5020004	50200040707	Cheat Lake-Cheat River
BUFFALO COAL COMPANY, INC.	S-2003-88	356	Tucker	160	2015	2070002	20700020202	Mount Storm Lake-Stony River
ROYAL SCOT MINERALS, INC.	31-72	400	Greenbrier	0	2015	5050005	50500050601	Little Clear Creek
BRADY CLINE COAL CO.	EM-97	11	Nicholas	6	2015	5050007	50500070501	Headwaters Buffalo Creek
JINKS MINING COMPANY	U-3031-93	15	Nicholas	8	2015	5050005	50500050801	Big Beaver Creek
SHARON COAL CO.	S-1028-87	160	Preston	3	2015	5020004	50200040706	Bull Run-Cheat River
RALEIGH COMMERCIAL DEVELOPMENT	149-79	70	Fayette	25	2015	5050004	50500040204	Meadow Creek
ROCKVILLE MINING CO.	237-76	50	Preston	44	2015	5020004	50200040705	Greens Run-Cheat River
ZY COAL CO.	S-30-80	62	Clay	0	2015	5050007	50500070502	Lilly Fork
BUFFALO COAL COMPANY, INC.	S-52-80	191	Grant	59.2	2015	2070002	20700020202	Mount Storm Lake-Stony River
THE MASTELLER COAL COMPANY	S-125-82	49	Mineral	10	2015	2070002	20700020207	Piney Swamp Run-North Branch Potomac River
SOUTHERN EAGLE MINING CORPORATION	U-32-84	11	Randolph	12	2015	5020004	50200040303	Taylor Run-Shavers Fork
WINCHESTER COALS, INC.	O-52-83	4.5	Logan	3	2016	5070102	50701020105	Fourteenmile Creek-Guyandotte River
SUMMERSVILLE FIVE BLOCK	S-3051-88	604	Nicholas	175	2016	5050007	50500070502	Lilly Fork
A S & K, INC.	S-1011-89	24	Monongalia	26	2016	5020003	50200030308	Scotts Run-Monongahela River
ROCKVILLE MINING CO.	S-91-85	125	Preston	50	2016	5020004	50200040703	Muddy Creek
ALPHAINE CORP.	S-6032-86	30	Clay	22	2016	5050007	50500070901	Leatherwood Creek-Elk River
LO-MING COAL CORPORATION	U-5049-87	12	Logan	4	2016	5070101	50701010402	Island Creek
PRINCESS SUSAN COAL CO.	S-76-82	67	Kanawha	0	2016	5050006	50500060401	Witcher Creek
CARSON ONE MINING, LLC	O-4-84	83	Upshur	75	2016	5020001	50200010303	French Creek
KEYSTONE COAL, INC.	S-84-83	100	Mingo	35	2016	5070201	50702010310	Blackberry Creek-Tug Fork
KEYSTONE COAL, INC.	U-186-83	19	Mingo	14	2016	5070201	50702010311	Mate Creek

ROBLEE COAL COMPANY	O-1009-93	51.48	Upshur	31.05	2016	5020002	50200020303	Hackers Creek
J. C. B. MINING, INC.	U-2006-88	9.99	Lewis	9.1	2016	5020002	50200020105	Polk Creek-West Fork River
LANDMARK CORPORATION	S-5069-88	184.52	Boone	30.5	2016	5050009	50500090502	Upper Little Coal River
ALAN BLOSSER	S-1010-87	12	Monongalia	12	2016	5020004	50200040707	Cheat Lake-Cheat River
SALYERS LEASING CORP.	U-5066-87	19	Mingo	9	2016	5070101	50701010506	Elk Creek-Guyandotte River
APPALACHIAN FUELS, LLC	S-3041-88	390	Clay	62.7	2016	5050005	50500050702	Outlet Twentymile Creek
ZY COAL CO.	91-79	64	Clay	0	2016	5050007	50500070503	Outlet Buffalo Creek
J. E. B., INC.	S-1063-86	56	Preston	56	2016	5020004	50200040702	Pringle Run-Cheat River
PINNACLE CREEK MINING CORP.	R-721	32	Wyoming	24	2016	5070101	50701010302	Pinnacle Creek
VICKIE ENERGY, INC.	U-53-85	14	Pocahontas	14	2016	5050005	50500050402	South Fork Cherry River
LOBO CAPITOL, INC.	UO-204	6	Preston	6	2016	5020004	50200040703	Muddy Creek

Special Reclamation (Land)

COMPANY	PERMIT	ACRES	COUNTY	SPREC_ACRE	YEAR	HUC8	HUC12	HU12_NAME
BELVA COAL COMPANY	R-591	45	Logan	60	2014	5070101	50701010507	Rum Creek-Guyandotte River
GLADY FORK MINING, INC.	U-60-83	33.07	Upshur	18	2014	5020001	50200010303	French Creek
KANAWHA DEVELOPMENT CORPORATION	O-14-81	48.67	Fayette	4	2015	5050006	50500060303	Smithers Creek
APPALACHIAN FUELS, LLC.	P-3019-08	10	Fayette	1	2015	5050006	50500060304	Boomer Branch-Kanawha River
KEYSTONE COAL, INC.	S-101-85	99	Mingo	22	2015	5070201	50702010310	Blackberry Creek-Tug Fork
QUINTAIN DEVELOPMENT, LLC	S-5033-96	369.25	Mingo	185	2015	5070201	50702010602	Jennie Creek-Tug Fork
ENERGY MARKETING CO., INC.	U-16-83	8.04	Barbour	3	2016	5020002	50200020201	Gnatty Creek
ENERGY MARKETING CO. INC.	UO-520	12.84	Barbour	7	2016	5020002	50200020202	Headwaters Elk Creek
ENERGY MARKETING CO. INC.	UO-885	67.11	Barbour	37	2016	5020002	50200020202	Headwaters Elk Creek
LANDMARK CORPORATION	S-5047-89	250.21	Boone	0	2025	5050009	50500090502	Upper Little Coal River
KEYSTONE COAL, INC.	U-5045-87	13.65	Mingo	0	2025	5070201	50702010310	Blackberry Creek-Tug Fork

Appendix 4 – TMDL development schedule

Group A

Subwatershed	Stream Name	Code	Trout	Impairments								
				pH	DO	Fe	Al	Cl	Se	Mn	FC	
South Branch Potomac	UNT RM 1.38/UNT RM 0.30/South Branch Potomac River RM 21.86	WVPSB-1.9-A-1										X
South Branch Potomac	Buffalo Creek	WVPSB-5										X
South Branch Potomac	Dumpling Run	WVPSB-9-B										X
South Branch Potomac	Anderson Run	WVPSB-18										X
South Branch Potomac	Mudlick Run	WVPSB-18-A				X						X
South Branch Potomac	UNT/Mudlick Run RM 2.88	WVPSB-18-A-0.8										X

South Branch Potomac	UNT/UNT RM 1.62/Mudlick Run RM 2.88	WVPSB-18-A-0.8-B										X
South Branch Potomac	Turnmill Run	WVPSB-18-A-1				X						X
South Branch Potomac	Walnut Bottom Run	WVPSB-18-B										X
South Branch Potomac	UNT/South Branch Potomac River RM 40.44	WVPSB-21-T										X
South Branch Potomac	UNT/South Branch Potomac River RM 59.19	WVPSB-21.5										X
South Branch Potomac	UNT/UNT RM 2.27/South Branch Potomac River	WVPSB-21.5-E										X
South Branch Potomac	UNT/UNT RM 4.07/South Branch Potomac River RM 59.19	WVPSB-21.5-G										X
South Branch Potomac	Mill Creek	WVPSB-25										X
South Branch Potomac	Johnson Run	WVPSB-25-A										X
South Branch Potomac	North Mill Creek	WVPSB-25-B										X
South Branch Potomac	Stony Creek	WVPSB-25-B-1				X						X
South Branch Potomac	Brushy Run	WVPSB-25-B-2				X						X
South Branch Potomac	South Mill Creek	WVPSB-25-C										X
South Branch Potomac	Robinson Run	WVPSB-26-A										X
South Branch Potomac	UNT/Robinson Run RM 2.84	WVPSB-26-A-4			X							X
South Branch Potomac	South Fork/Lunice Creek	WVPSB-26-D	X		X	X						X
South Branch Potomac	Big Star Run	WVPSB-26-D-2	X									X
South Branch Potomac	Powers Hollow	WVPSB-28-0.2A										X
South Branch Potomac	Jordan Run	WVPSB-28-A										X
South Branch Potomac	Laurel Run/Jordan Run	WVPSB-28-A-2	X									X
South Branch Potomac	Deer Run	WVPSB-35										X
Upper Kanawha	Mission Hollow (Venable Branch)	WVK-46										X
Upper Kanawha	Chappel Hollow (Chappel Branch)	WVK-46-A										X
Upper Kanawha	Lower Donnally Branch	WVK-48				X						X
Upper Kanawha	Pointlick Fork	WVK-49-F									X	
Upper Kanawha	UNT/Pointlick Fork RM 2.26	WVK-49-F-4									X	
Upper Kanawha	Rattlesnake Hollow	WVK-49-I									X	
Upper Kanawha	Georges Creek	WVK-50										X
Upper Kanawha	New West Hollow	WVK-58-B.8-1							X	X		
Upper Kanawha	Wet Branch	WVK-61-C								X		
Upper Kanawha	Longbottom Creek	WVK-61-F							X			
Upper Kanawha	Laurel Fork/Longbottom Creek	WVK-61-F-2							X			
Upper Kanawha	Coal Fork	WVK-61-H							X	X		
Upper Kanawha	Laurel Fork	WVK-61-H-1								X		
Upper Kanawha	Left Fork/Laurel Fork	WVK-61-H-1-A								X		
Upper Kanawha	UNT/Left Fork RM 1.99/Laurel Fork	WVK-61-H-1-A-4								X		
Upper Kanawha	UNT/Coal Fork RM 4.63	WVK-61-H-3							X	X		
Upper Kanawha	Toms Fork	WVK-61-K								X		
Upper Kanawha	Tenmile Fork	WVK-61-L								X		
Upper Kanawha	UNT/Tenmile Fork RM 1.22	WVK-61-L-0.5								X		
Upper Kanawha	UNT/Tenmile Fork RM 3.98	WVK-61-L-4								X		
Upper Kanawha	UNT/Tenmile Fork RM 4.17	WVK-61-L-5								X		

Upper Kanawha	Kellys Creek	WVK-64				X						X
Upper Kanawha	Horse mill Branch	WVK-64-A		X							X	X
Upper Kanawha	UNT/Horsemill Branch RM 0.50	WVK-64-A-1		X			X					
Upper Kanawha	UNT/Horsemill Branch RM 0.83	WVK-64-A-2		X			X					
Upper Kanawha	UNT/Horsemill Branch RM 1.58	WVK-64-A-4		X		X	X					
Upper Kanawha	Frozen Branch	WVK-64-B								X		X
Upper Kanawha	Sugarcamp Branch	WVK-64-C		X							X	
Upper Kanawha	Hurricane Fork	WVK-64-K								X		X
Upper Kanawha	Goose Hollow	WVK-64-L										X
Upper Kanawha	Cedar Creek	WVK-65-Q		X			X					
Upper Kanawha	Mossy Creek	WVK-65-Y										X
Upper Kanawha	Long Branch	WVK-65-Y-2										X
Upper Kanawha	North Sand Branch	WVK-65-HH-1										X
Upper Kanawha	Maple Fork	WVK-65-HH-1-A					X					X
Upper Kanawha	Hughes Creek	WVK-66					X				X	
Upper Kanawha	Barn Hollow	WVK-66-B.6									X	
Upper Kanawha	Graveyard Hollow	WVK-66-B.7									X	
Upper Kanawha	Sixmile Hollow	WVK-66-D									X	
Upper Kanawha	Bullpush Fork	WVK-72-B									X	
Upper Kanawha	Burnett Hollow	WVK-72-B-2										X
Upper Kanawha	Riffle Hollow	WVK-72-B-4									X	
Upper Kanawha	Fourmile Fork	WVK-72-F									X	
Upper Ohio North	Mahan Run	WVO-96										X
Upper Ohio North	UNT/Mahan Run RM 2.04	WVO-96-A										X
Upper Ohio North	UNT/Holbert Run RM 1.26	WVO-99-B										X
Upper Ohio North	Laurel Hollow (Muchmores Run)	WVO-105										X
Upper Ohio North	Middle Run	WVO-107										X
Upper Ohio North	Marks Run	WVO-108										X
Upper Ohio North	UNT/Marks Run RM 0.89	WVO-108-A										X
Shenandoah Hardy	UNT/Capon Run RM 4.49	WVSNF-1-A					X					X
Shenandoah Hardy	Crab Run	WVSNF-2					X					X
Shenandoah Hardy	UNT/Crab Run RM 3.97	WVSNF-2-N					X					X
Shenandoah Hardy	UNT/Crab Run RM 5.65	WVSNF-2-T					X					X

Group B

Subwatershed	Stream name	Code	Trout	Impairments							
				pH	DO	Fe	Al	Be	Mn	FC	
Tygart Valley	Tygart Valley River	WVMT	X			X				-	X
Goose Creek	Goose Creek	WVMT-4		X		X	X			-	X
Lost Run	Lost Run	WVMT-5				RE				-	X
Wickwire Run	Wickwire Run	WVMT-8								-	X

Otter Creek	Otter Creek	WVMT-9								-	X
Berkeley Run	Berkeley Run	WVMT-11				X				-	X
Berkeley Run	Shelby Run	WVMT-11-A				RE				-	X
Berkeley Run	Long Run	WVMT-11-B				X				-	X
Berkeley Run	Berry Run	WVMT-11-B-1				X				-	X
Three Fork Creek	Three Fork Creek	WVMT-12		X		RE					X
Three Fork Creek	UNT/Three Fork Creek RM 2.02	WVMT-12-0.5A								-	X
Three Fork Creek	Rocky Branch	WVMT-12-A									X
Three Fork Creek	Raccoon Creek	WVMT-12-C		X		X	X				
Three Fork Creek	Little Raccoon Creek	WVMT-12-C-2				RE					X
Three Fork Creek	Laurel Run	WVMT-12-D	X								X
Three Fork Creek	Martins Run	WVMT-12-E									X
Three Fork Creek	Lick Run	WVMT-12-F		X			X				
Three Fork Creek	Fields Creek	WVMT-12-G	X	X		X	X				X
Three Fork Creek	Brains Creek	WVMT-12-G-2	X			RE					X
Three Fork Creek	Birds Creek	WVMT-12-H		X		RE	X	X			
Three Fork Creek	Squires Creek	WVMT-12-H-1		X		X	X	X			
Three Fork Creek	UNT/Squires Creek RM 2.40	WVMT-12-H-1-B		X		X	X				
Three Fork Creek	UNT/Birds Creek RM 0.64	WVMT-12-H-2		X		X	X				
Three Fork Creek	UNT/Birds Creek RM 2.57	WVMT-12-H-4					X				
Pleasant Creek	Pleasant Creek	WVMT-15									X
Sandy Creek	Sandy Creek	WVMT-18									X
Sandy Creek	Little Cove Run	WVMT-18-D									X
Sandy Creek	Little Sandy Creek	WVMT-18-E		X		X	X				
Sandy Creek	Maple Run	WVMT-18-E-1		X		X	X				
Sandy Creek	York Run	WVMT-18-E-2									X
Sandy Creek	Left Fork/Little Sandy Creek	WVMT-18-E-3		X		X	X	X			
Sandy Creek	Left Fork/Sandy Creek	WVMT-18-G				RE					X
Sandy Creek	UNT/Left Fork RM 4.58/Sandy Creek	WVMT-18-G-2									X
Sandy Creek	UNT/Sandy Creek RM 10.47	WVMT-18-H									X
Sandy Creek	UNT/UNT RM 0.56/Sandy Creek RM 10.47	WVMT-18-H-1		X							
Stony Run	Stony Run	WVMT-19.5									X
Big Cove Run	Big Cove Run	WVMT-20									X
Teter Creek	Teter Creek	WVMT-23	X								X
Teter Creek	Glade Run	WVMT-23-A									X
Teter Creek	Raccoon Creek	WVMT-23-B									X
Teter Creek	Stony Run	WVMT-23-B-1									X
Teter Creek	Brushy Fork	WVMT-23-C	X								X
Teter Creek	Mill Run	WVMT-23-F	X								X
Teter Creek	Jimmy Run	WVMT-23-G		X							
Laurel Creek	Laurel Creek	WVMT-24	X	-	-		X				
Laurel Creek	Frost Run	WVMT-24-A				RE					X

Laurel Creek	Bonica Run	WVMT-24-B								X
Laurel Creek	Sugar Creek	WVMT-24-C			X					X
Laurel Creek	Glady Creek	WVMT-24-C-0.5				X				X
Laurel Creek	Whitman Run	WVMT-24-C-1.5								X
Laurel Creek	Hunter Fork	WVMT-24-C-3.5								X
Laurel Creek	Long Run	WVMT-24-C-4								X
Mitchell Run	Mitchell Run	WVMT-25								X
Hackers Creek	Hackers Creek	WVMT-26				X				X
Hackers Creek	Taylor Drain	WVMT-26-A				X				X
Hackers Creek	Foxgrape Run	WVMT-26-B				X				X
Hackers Creek	Little Hackers Creek	WVMT-26-C				X				X
Fords Run	Fords Run	WVMT-27		X		X	X			X
Shooks Run	Shooks Run	WVMT-28								X
Anglins Run	Anglins Run	WVMT-29				RE				X
Laurel Run/Tygart Valley River	Laurel Run/Tygart Valley River	WVMT-32								X
Laurel Run/Tygart Valley River	Bearcamp Run	WVMT-32-D		X						
Buckhannon River	Buckhannon River	WVMTB	X			RE				X
First Big Run	First Big Run	WVMTB-1								X
Cottrill Run	Cottrill Run	WVMTB-2				X				X
Big Run	Big Run	WVMTB-3				X				X
Lick Shoals Run	Lick Shoals Run	WVMTB-4								X
Pecks Run	Pecks Run	WVMTB-5				X				X
Pecks Run	UNT/Pecks Run RM 2.24	WVMTB-5-0.8A				RE				X
Pecks Run	Little Pecks Run	WVMTB-5-B				RE				X
Pecks Run	Mud Run	WVMTB-5-C				RE				X
Sand Run	Sand Run	WVMTB-7								X
Sand Run	Laurel Fork/Sand Run	WVMTB-7-A								X
Sand Run	Left Fork/Sand Run	WVMTB-7-B								X
Big Run	Big Run	WVMTB-8				X				X
Childers Run	Childers Run	WVMTB-9								X
Turkey Run	Turkey Run	WVMTB-10				RE				X
Turkey Run	Sugar Run	WVMTB-10-A				RE				X
Fink Run	Fink Run	WVMTB-11				X				X
Fink Run	Brushy Fork	WVMTB-11-A				X				X
Fink Run	Mud Lick	WVMTB-11-B				X				X
Fink Run	Wash Run	WVMTB-11-B.5								X
Fink Run	Bridge Run	WVMTB-11-B.7			X	X				X
Little Sand Run	Little Sand Run	WVMTB-13			X					X
Little Sand Run	Left Fork/Little Sand Run	WVMTB-13-A								X
Ratcliff Run	Ratcliff Run	WVMTB-14								X
Stony Run	Stony Run	WVMTB-15								X
Hickory Flat Run	Hickory Flat Run	WVMTB-16								X

Cutright Run	Cutright Run	WVMTB-17				X				X
Cutright Run	Lick Run	WVMTB-17-A				X				X
French Creek	French Creek	WVMTB-18				X				X
French Creek	Bull Run	WVMTB-18-B			X	X				X
French Creek	Blacklick Run	WVMTB-18-B-2		X		X	X			
French Creek	Mudlick Run	WVMTB-18-B-3				X	X			X
French Creek	Grand Camp Run	WVMTB-18-C	X				X			X
French Creek	Laurel Fork/French Creek	WVMTB-18-D	X							X
French Creek	Morgan Run	WVMTB-18-F				X				X
French Creek	Grub Hollow	WVMTB-18-G				X				X
French Creek	Brush Run	WVMTB-18-H								X
French Creek	Slab Camp Fork	WVMTB-18-I				X				X
French Creek	Left Fork/French Creek	WVMTB-18-K								X
Trubie Run	Trubie Run	WVMTB-19								X
Sawmill Run	Sawmill Run	WVMTB-20				X				X
Laurel Run/Buckhannon River	Laurel Run/Buckhannon River	WVMTB-24								X
Tenmile Creek	Tenmile Creek	WVMTB-25	X			RE			X	
Tenmile Creek	Right Fork/Tenmile Creek	WVMTB-25-A	X			RE				X
Panther Creek	Panther Creek	WVMTB-27	X	X						
Swamp Run	Swamp Run	WVMTB-29		X		RE				
Herods Run	Herods Run	WVMTB-30		X						
Right Fork/Buckhannon River	Right Fork/Buckhannon River	WVMTB-31				RE				
Right Fork/Buckhannon River	UNT/Right Fork RM 12.18/Buckhannon River	WVMTB-31-K		X						
Left Fork/Buckhannon River	Left Fork/Buckhannon River	WVMTB-32				RE				
Left Fork/Buckhannon River	Smooth Rock Lick Run	WVMTB-32-A		X						
Middle Fork River	Middle Fork River	WVMTM	X			X				
Hooppole Run	Hooppole Run	WVMTM-3				X				
Devil Run	Devil Run	WVMTM-4	X	X		RE				
Service Run	Service Run	WVMTM-5		X						
Hell Run	Hell Run	WVMTM-6	X	X		RE	X			
Short Run	Short Run	WVMTM-7	X	X			X			
White Oak Run	White Oak Run	WVMTM-8		X		RE				
White Oak Run	UNT/White Oak Run RM 0.44	WVMTM-8-A		X			X			
Gum Run	Gum Run	WVMTM-9								X
Gum Run	UNT/Gum Run RM 1.18	WVMTM-9-B								X
Laurel Creek/Middle Fork River	Laurel Creek/Middle Fork River	WVMTM-10	X							X
Laurel Creek/Middle Fork River	Brook Run	WVMTM-10-A		X						X
Right Fork/Middle Fork River	Right Fork/Middle Fork River	WVMTM-11	X			X				X
Right Fork/Middle Fork River	Jenks Fork	WVMTM-11-E	X	X						
Kettle Run	Kettle Run	WVMTM-12		X			X			
Lick Run	Lick Run	WVMTM-15		X						
Cassity Fork	Cassity Fork	WVMTM-16	X	X		X	X	X		

Cassity Fork	Panther Run	WVMTM-16-A	X			X	X			
Cassity Fork	UNT/Panther Run RM 0.62	WVMTM-16-A-1	X	X			X			
Cassity Fork	Mulberry Fork	WVMTM-16-B		X						
Stonecoal Run	Stonecoal Run	WVMTM-20	X	X			X			
Pleasant Run	Pleasant Run	WVMTM-21	X	X						
Schoolcraft Run	Birch Fork	WVMTM-25-A	X	X			X			
Birch Fork	Rocky Run	WVMTM-26-B	X	X			X			
UNT/Tygart Valley River RM 58.40	UNT/Tygart Valley River RM 58.40	WVMT-33.6					X			
Mill Creek	Mill Creek	WVMT-35	X			X	X			X
Shooks Run	Shooks Run	WVMT-35.5								X
Island Run	Island Run	WVMT-36					RE			
Beaver Creek	Beaver Creek	WVMT-37		X			RE	X		
Zebs Creek	Zebs Creek	WVMT-38	X							X
Laurel Run	Laurel Run	WVMT-39	X				RE			
Big Laurel Run	Little Laurel Run	WVMT-40-A	X	X			X			
UNT/Tygart Valley River RM 72.55	UNT/Tygart Valley River RM 72.55	WVMT-40.5		X			X	X		
Grassy Run	Grassy Run	WVMT-41		X			X	X		
Roaring Creek	Roaring Creek	WVMT-42		X			RE	X		
UNT/Tygart Valley River RM 76.87	UNT/Tygart Valley River RM 76.87	WVMT-42.5					X			X
Roaring Creek	UNT/Roaring Creek RM 4.09	WVMT-42-0.8A		X			X	X		
Roaring Creek	Flatbush Fork	WVMT-42-B	X	X			X			
Roaring Creek	UNT/Flatbush Fork RM 0.78	WVMT-42-B-0.5		X			X			
Roaring Creek	UNT/Flatbush Fork RM 1.80	WVMT-42-B-1		X			X			
Roaring Creek	UNT/Roaring Creek RM 11.0	WVMT-42-E		X						
Leading Creek	Leading Creek	WVMT-43					X			X
UNT/Tygart Valley River Rm 81.92	UNT/Tygart Valley River Rm 81.92	WVMT-43.8					X			
UNT/Tygart Valley River Rm 82.27	UNT/Tygart Valley River Rm 82.27	WVMT-43.9					X			X
Leading Creek	Craven Run	WVMT-43-A								X
Leading Creek	Davis Lick	WVMT-43-H					X			X
Leading Creek	Laurel Run	WVMT-43-O								X
Chenoweth Creek	Chenoweth Creek	WVMT-45	X							X
Chenoweth Creek	Isner Creek	WVMT-45-A								X
Kings Run	Kings Run	WVMT-48								X
Dodson Run	Dodson Run	WVMT-49								X
UNT/Tygart Valley River RM 92.85	UNT/Tygart Valley River RM 92.85	WVMT-51.8					X			X
Sea Run	Sea Run	WVMT-56								X
Jones Run	Jones Run	WVMT-58								X
Dry Run	Dry Run	WVMT-63								X
Mill Creek	Mill Creek	WVMT-64	X							X
UNT/Tygart Valley River RM 105.69	UNT/Tygart Valley River RM 105.69	WVMT-64.2					X			X
Mill Creek	McCall Run	WVMT-64-0.5A								X
Mill Creek	Right Fork/Mill Creek	WVMT-64-A								X

Mill Creek	Meatbox Run	WVMT-64-E	X	X			X			
Mill Creek	Potatohole Fork	WVMT-64-F	X	X			X			

Group C

Subwatershed	Stream name	Code	Trout	Impairments					
				pH	DO	Fe	Al	Mn	FC
Meadow River	Meadow River	WVKG-19			X	X			X
Meadow River	Dogwood Creek	WVKG-19-A	X						
Meadow River	Hedricks Creek	WVKG-19-B							
Meadow River	Arrowwood Creek	WVKG-19-C		X					
Meadow River	Brackens Creek	WVKG-19-J	X	X					
Meadow River	Piney Creek	WVKG-19-L-1		X					
Meadow River	UNT/Burdette Creek RM 1.35	WVKG-19-L-2				X			
Meadow River	Toms Creek	WVKG-19-M		X					
Meadow River	Laurel Creek/Meadow River	WVKG-19-N	X	X					
Meadow River	UNT/Laurel Creek RM 1.88	WVKG-19-N-1		X					
Meadow River	Kates Creek	WVKG-19-O		X					
Meadow River	Surbaugh Creek	WVKG-19-O.7	X	X					
Meadow River	Meadow Creek	WVKG-19-P							X
Meadow River	Old Field Branch	WVKG-19-U-2-C	X	X					
Meadow River	Little Clear Creek	WVKG-19-V	X						
Meadow River	Beaver Creek	WVKG-19-V-1							X
Meadow River	Otter Creek	WVKG-19-W			X	X			
Meadow River	Callahan Branch	WVKG-19-W.4				X			
Meadow River	Methodist Branch	WVKG-19-W-1				X			
Meadow River	Smoot Branch	WVKG-19-W-2							X
Meadow River	UNT/Otter Creek RM 2.81	WVKG-19-W-4							X
Meadow River	Buffalo Creek	WVKG-19-Y				X			
Rockymarsh Run	Rockymarsh Run	WVP-3	X						X
Rockymarsh Run	UNT/Rockymarsh Run RM 3.99 (West Fork)	WVP-3-B							X
Warm Spring Run	Warm Spring Run	WVP-10							X
Warm Spring Run	UNT/Warm Spring Run RM 10.05	WVP-10-L							X

Note: Group D impairments will not be finalized until September 2015.