

# Leersia oryzoides



## rice cutgrass

Family	Poaceae		
Origin	Native		
WIS Code	OBL	CoC	4



© John Hilty



© Marilee Lovit

### DESCRIPTION

Wetland grass (1 to 1.5 m tall) with hairless to slightly hairy stems, unbranched, either erect or decumbant (falling over and then curving up). Leaves (7 to 30 cm long) are flat with very sharp, stiff cutting hairs along the leaf margins. Nodes are densely hairy with downward pointing hairs.

### FLOWERS AND FRUITS

August through September. Flower stalks are at the top of stems, pyramid-shaped (10 to 20 cm long) and branching with one branch per node near the top and two or more branches per node near the base. Spikelets (4 to 7.5 mm long) are elliptic, flattened, overlapping and with a single floret. Spikelets are strongly hairy along the keel (ridged edges) and also hairy on the side bracts (lemma and palea), and they lack outer bracts (glumes) that are common in most grasses.



© Dwayne Estes

### HABITAT

Floodplain forests, swamps, depression ponds, bogs, fens, wet meadows, and low stream banks.

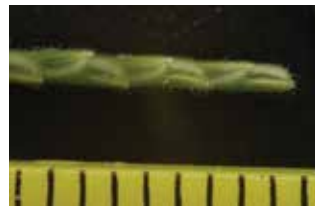
### SIMILAR SPECIES

*Leersia virginica*, whitegrass, the only other *Leersia* species in West Virginia, does not have sharp-cutting leaf edges, and the spikelets are less than 4 mm long.



© Rob Rountledge

*Leersia oryzoides*



© Dan Johnson

*Leersia virginica*