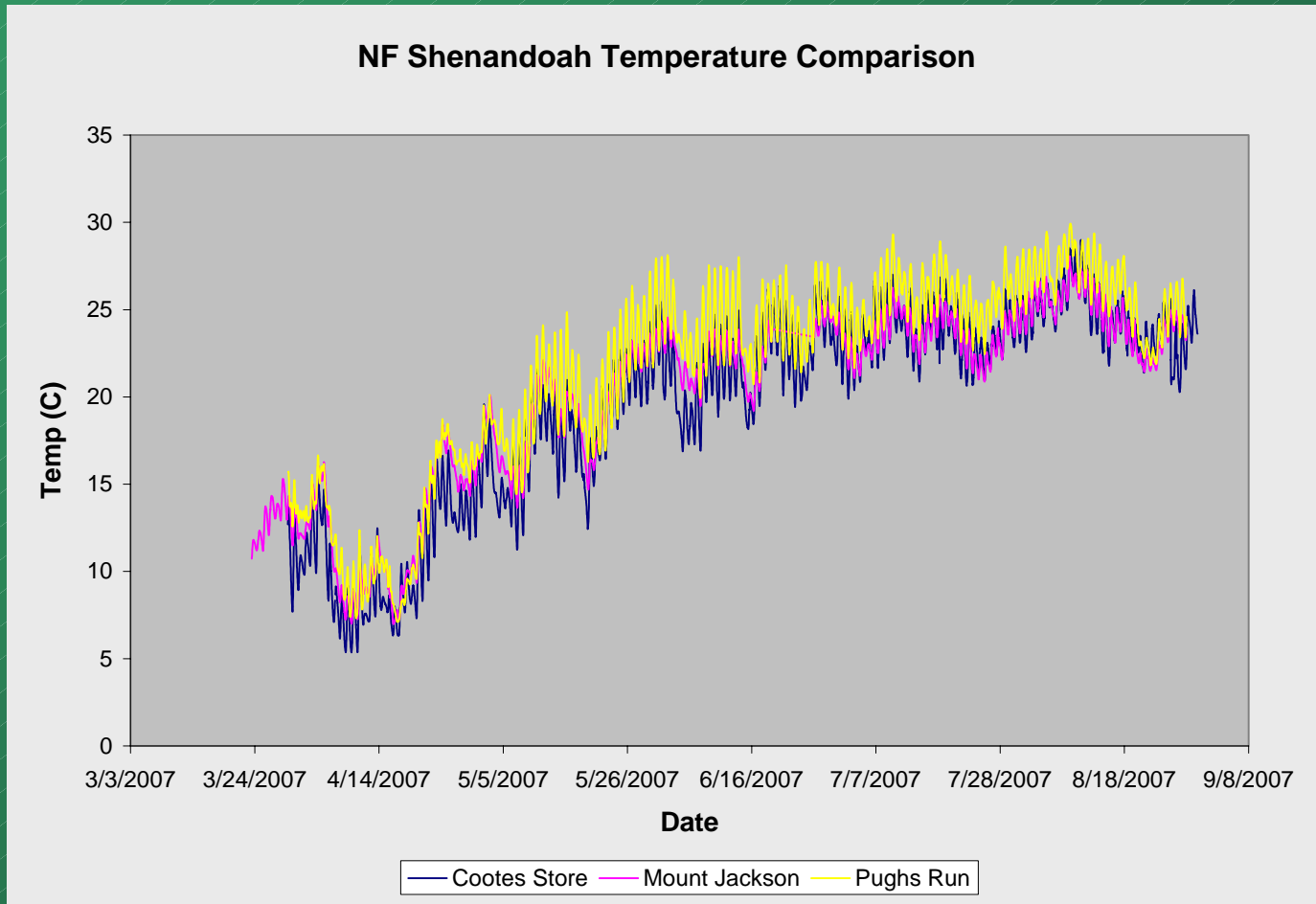
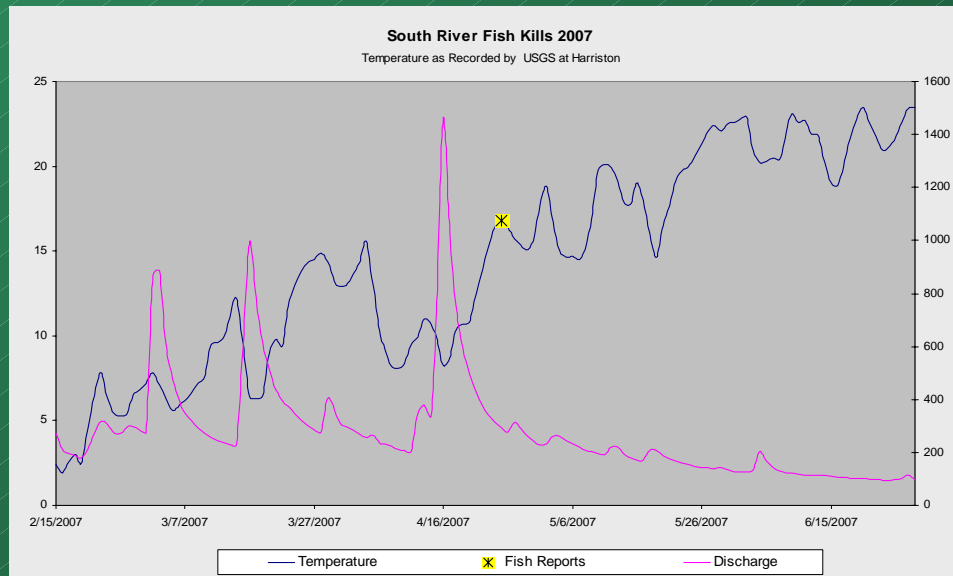
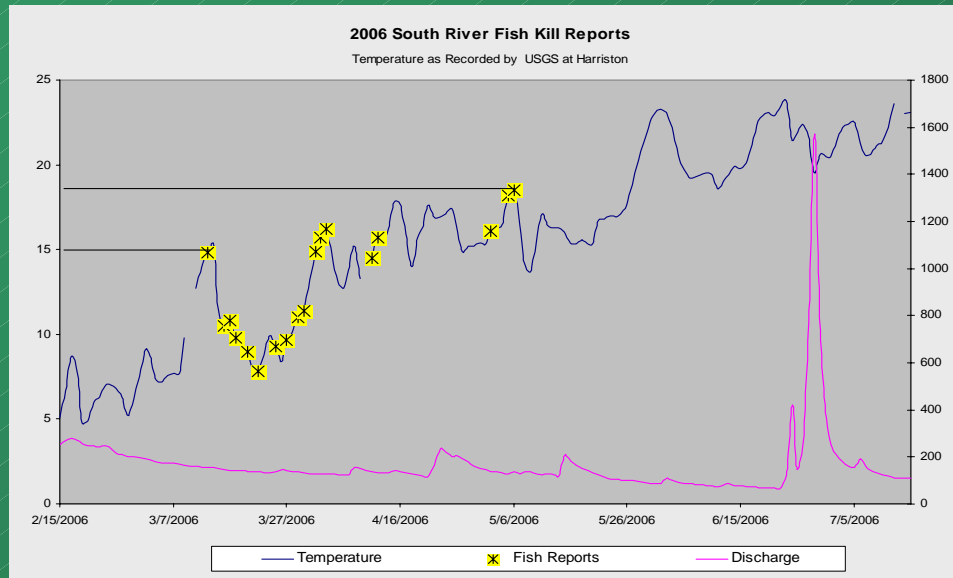


North Fork Shenandoah Temperature Comparisons

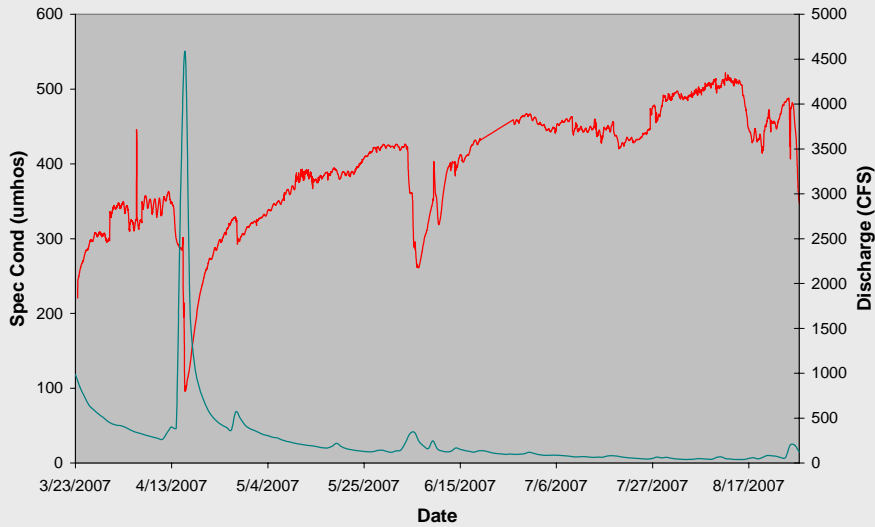


South River

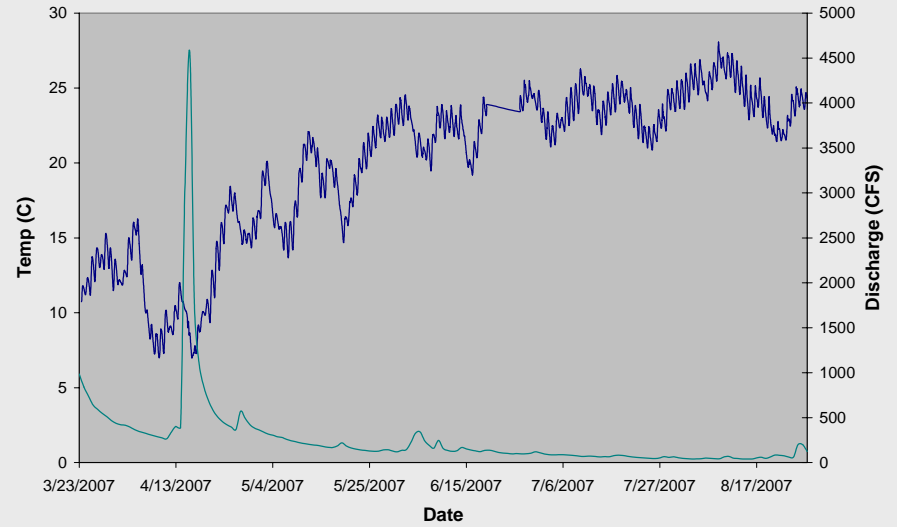


North Fork Shenandoah River at Mount Jackson

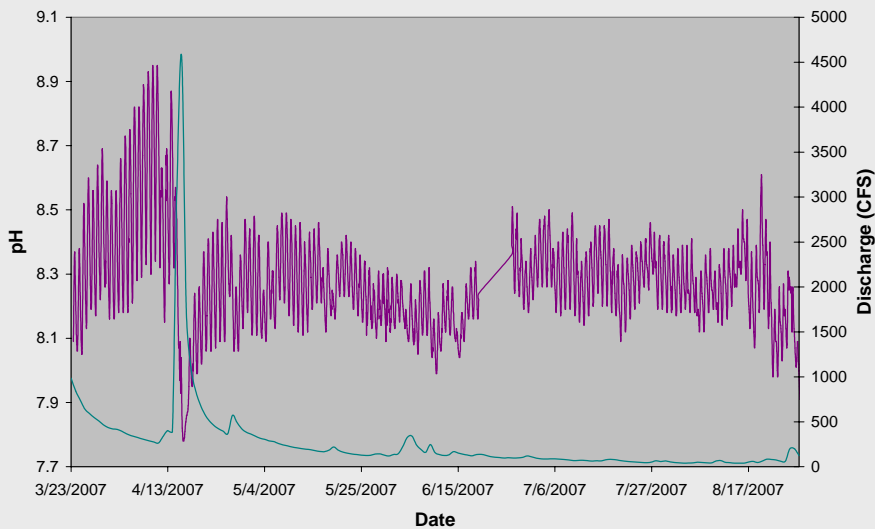
Specific Conductivity



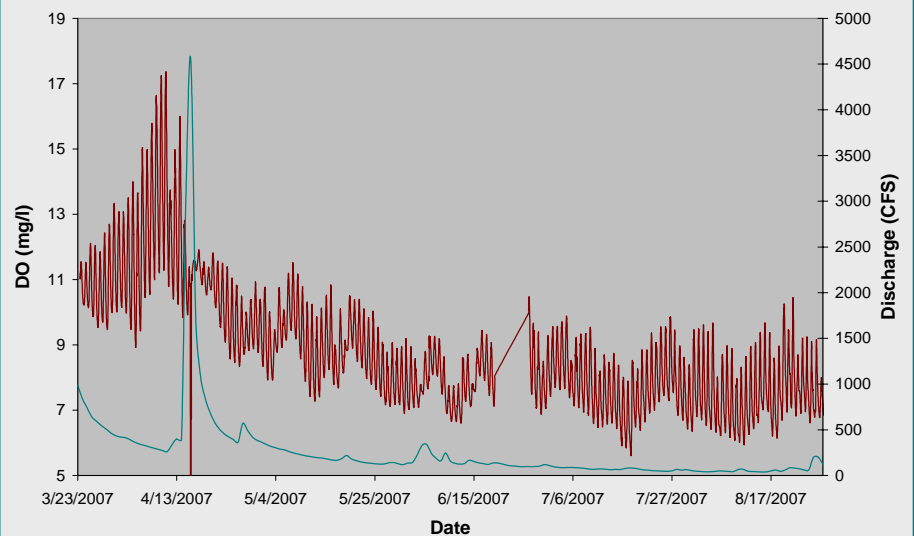
Temperature



pH



Dissolved Oxygen

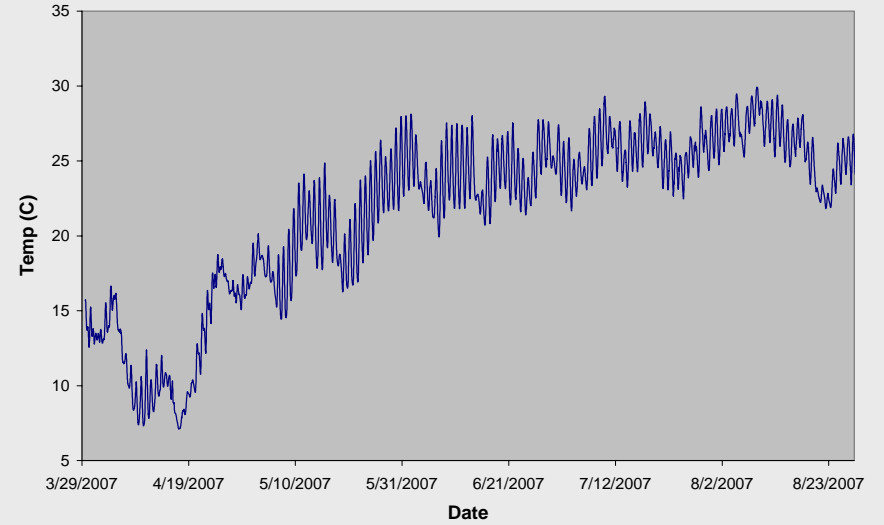


North Fork Shenandoah River Downstream Pughs Run

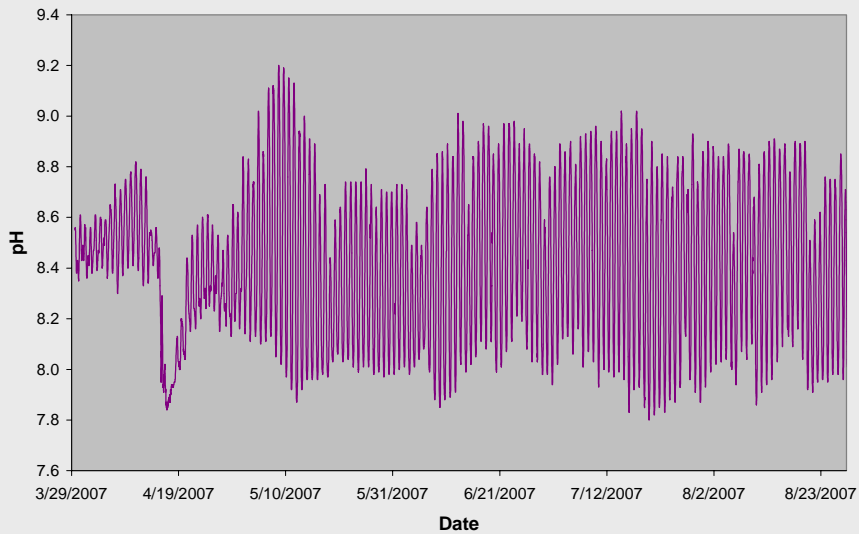
Specific Conductivity



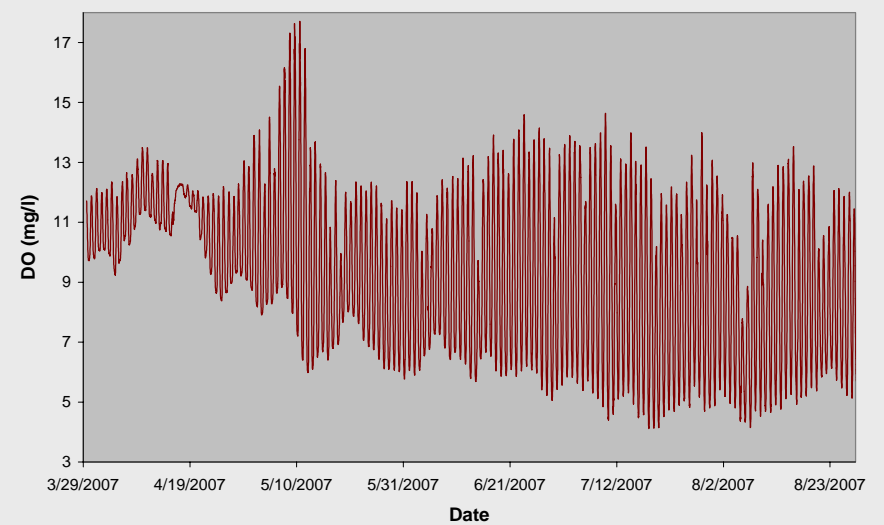
Temperature



pH

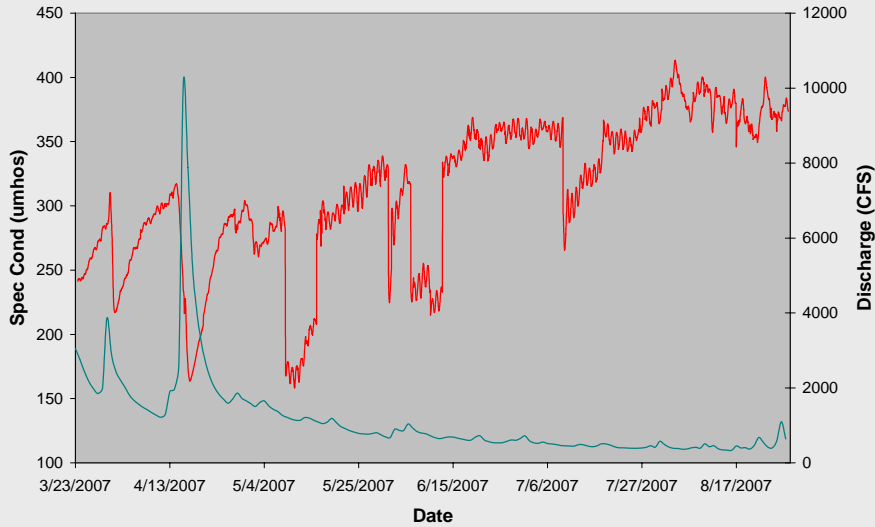


Dissolved Oxygen

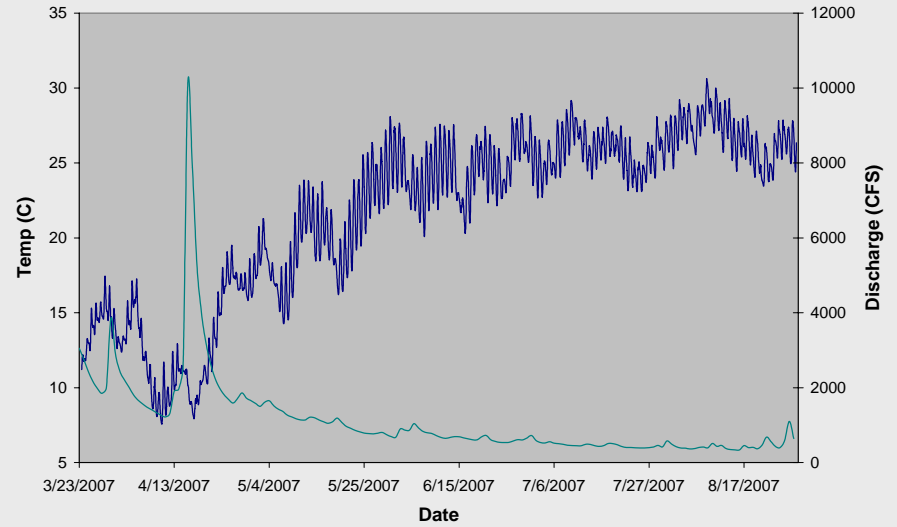


South Fork Shenandoah River Downstream Whitehouse Landing

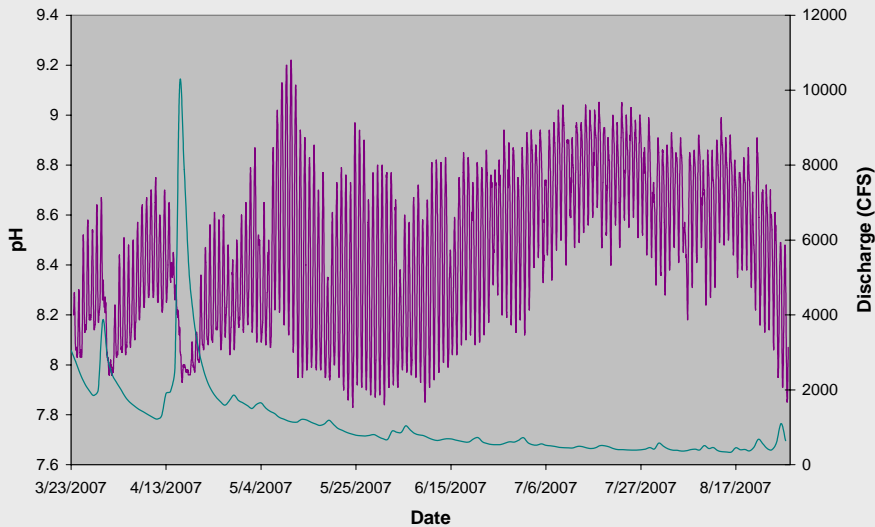
Specific Conductivity



Temperature



pH



Dissolved Oxygen

