

# SHENANDOAH

62006.4 = North Fork  
@ Strasburg, Station  
1

62006.5 = North Fork  
@ Woodstock, Pugh's  
Run, Station 2

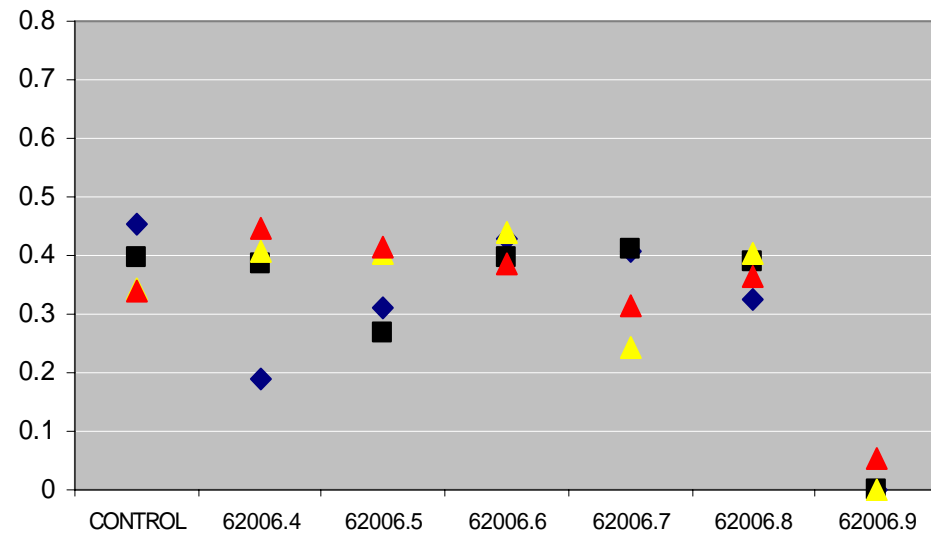
62006.6 = North Fork  
@ Mt. Jackson,  
Station 3

62006.7 = MainStem  
@ Berryville, Station  
4

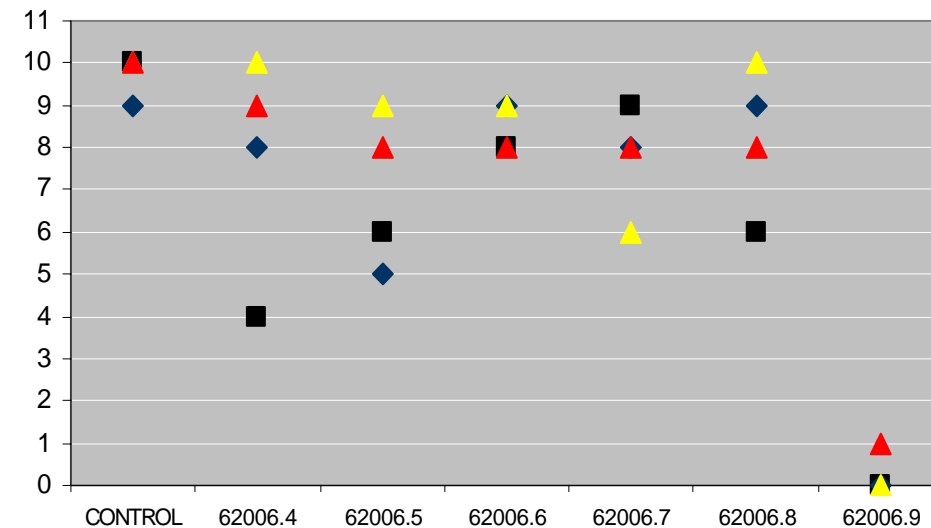
62006.8 = Cedar  
Creek @ Strasburg,  
Station 5

62006.9 = South River  
@ Harriston, Station 6

7 DAY BIOMASS-SHENANDOAH 62006



7 DAY SURVIVAL-SHENANDOAH 62006



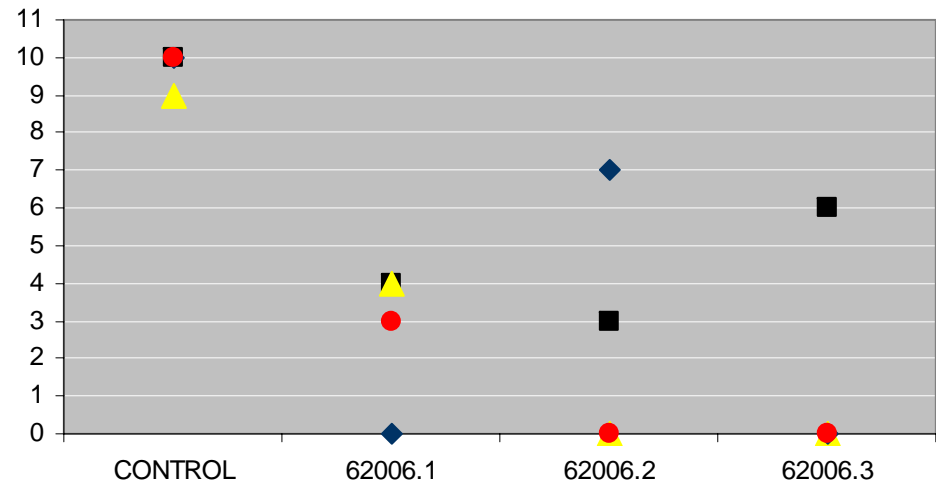
# POTOMAC

62006.1 = Dry Fork  
Upstream of Harman

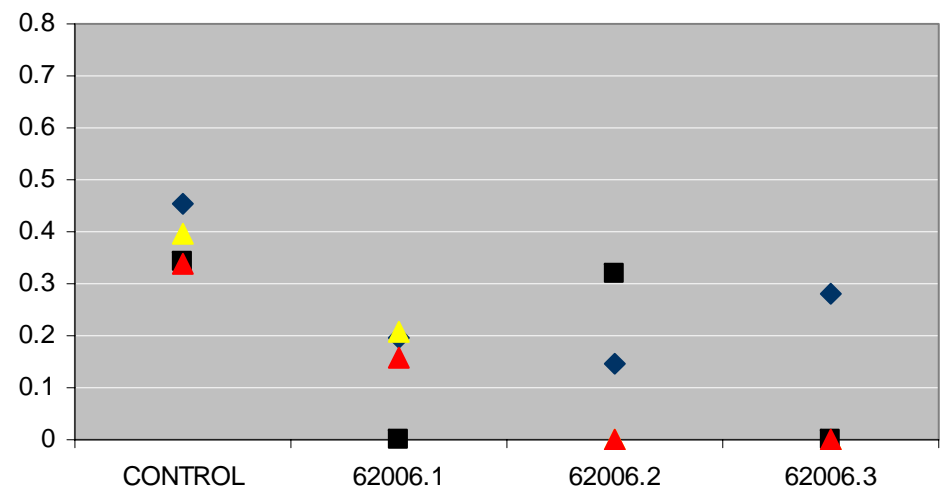
62006.2 = South Branch @  
McNeil

62006.3 = South Branch,  
Hanging Rock @  
Wapacoma

7 DAY SURVIVAL-POTOMAC 62006



7 DAY BIOMASS-POTOMAC 62006



# Sept. POTOMAC

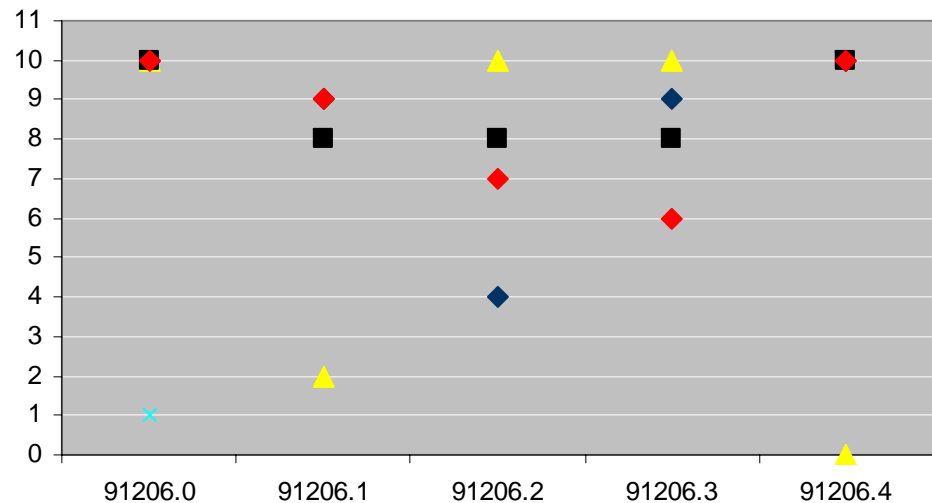
91206.1 = Harman

91206.2 = McNeil

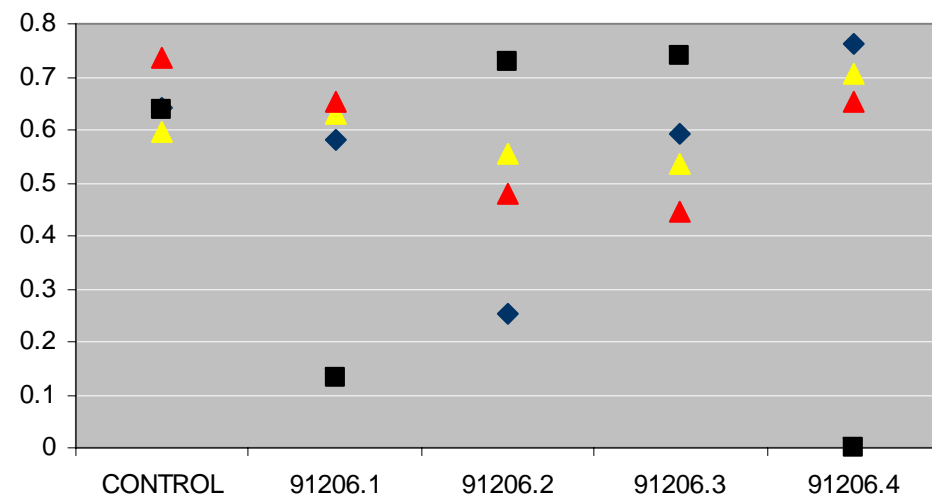
91206.3 = Welton Park

91206.4 = Millesons Mill  
Bridge

### 7 DAY SURVIVAL- POTOMAC 91206

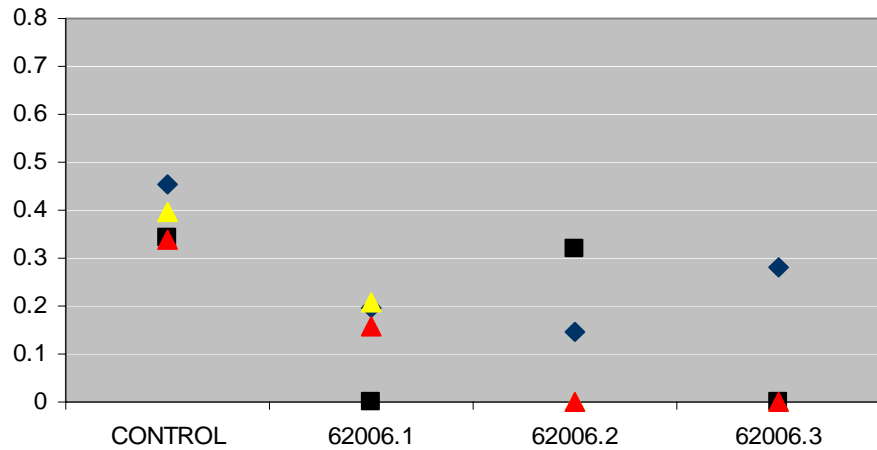


### 7 DAY BIOMASS- POTOMAC 91206

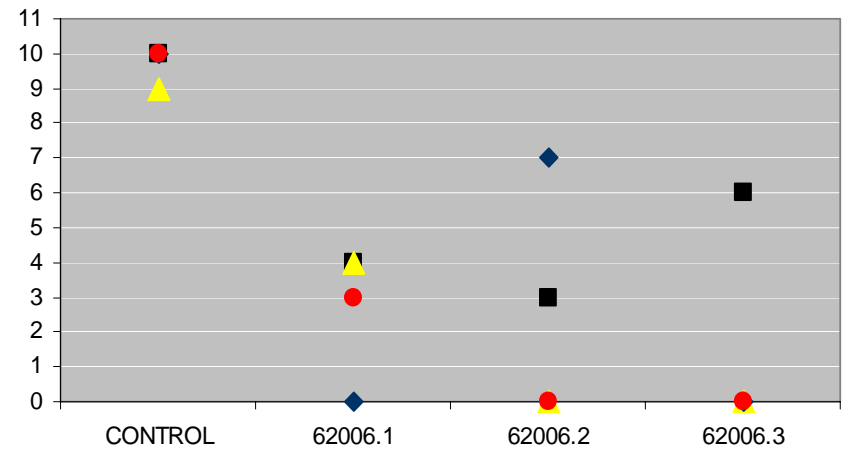


# COMPARISON OF JUNE TO SEPT. POTOMAC SITES

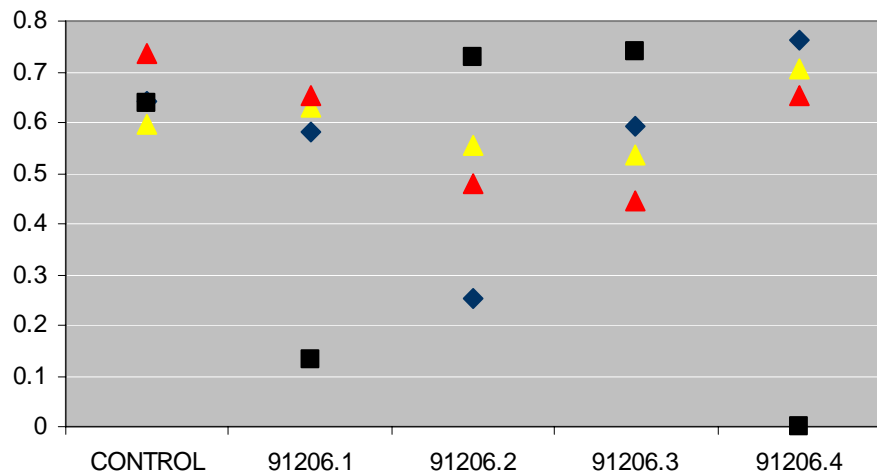
## 7 DAY BIOMASS-POTOMAC 62006



## 7 DAY SURVIVAL-POTOMAC 62006



## 7 DAY BIOMASS-POTOMAC 91206



## 7 DAY SURVIVAL-POTOMAC 91206

