

USGS 01608500 SOUTH BRANCH POTOMAC RIVER NEAR SPRINGFIELD, WV

Specific conductance, water,  
unfiltered, microsiemens per centimeter  
at 25 degrees Celsius



----- Provisional Data Subject to Revision -----

USGS 01608500 SOUTH BRANCH POTOMAC RIVER NEAR SPRINGFIELD, WV

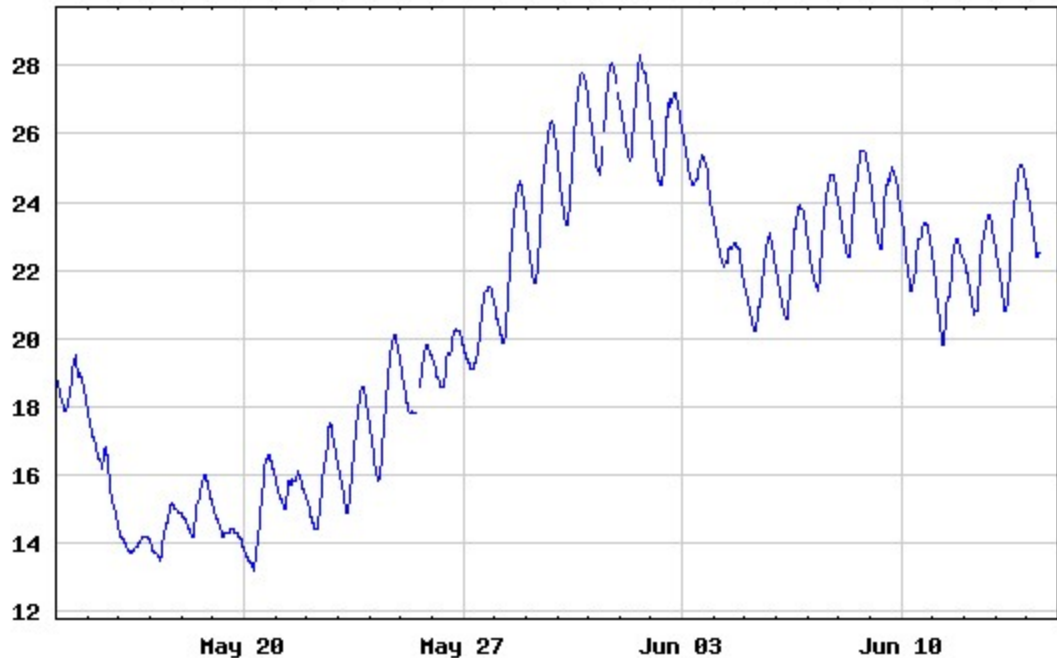
Turbidity, water, monochrome near  
 infra-red LED light, 780-900 nm,  
 detection angle 90 +/- 2.5 degrees, FNU



----- Provisional Data Subject to Revision -----

USGS 01608500 SOUTH BRANCH POTOMAC RIVER NEAR SPRINGFIELD, WV

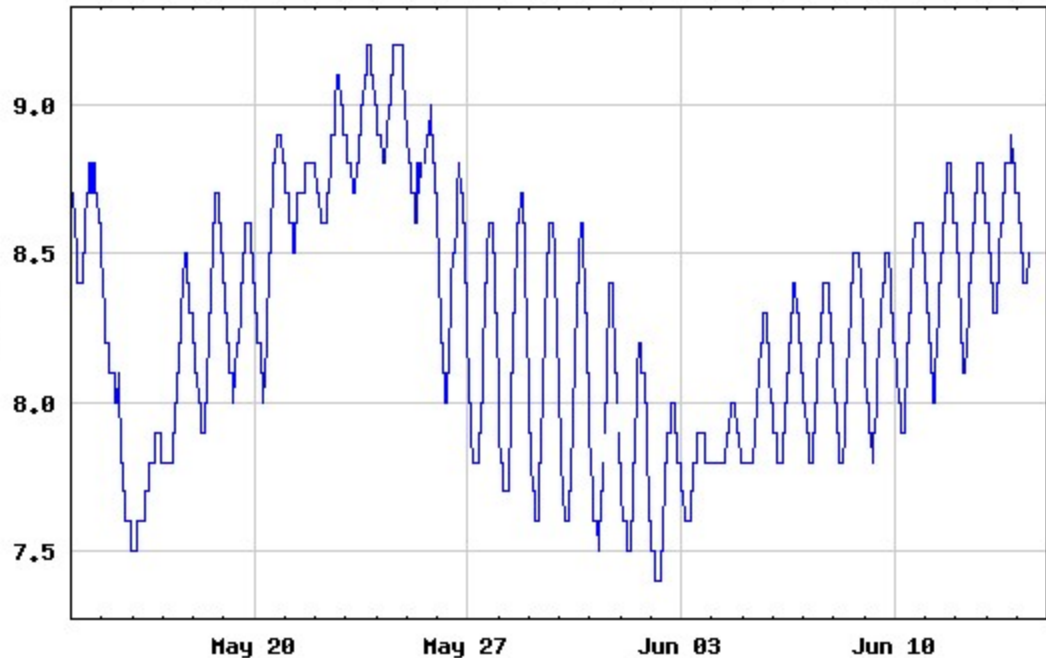
Temperature, water, degrees Celsius



----- Provisional Data Subject to Revision -----

USGS 01608500 SOUTH BRANCH POTOMAC RIVER NEAR SPRINGFIELD, WV

pH, water, unfiltered, field, standard  
units



---- Provisional Data Subject to Revision ----

USGS 01608500 SOUTH BRANCH POTOMAC RIVER NEAR SPRINGFIELD, WV

Dissolved oxygen, water, unfiltered,  
milligrams per liter

12  
10  
8  
6  
4

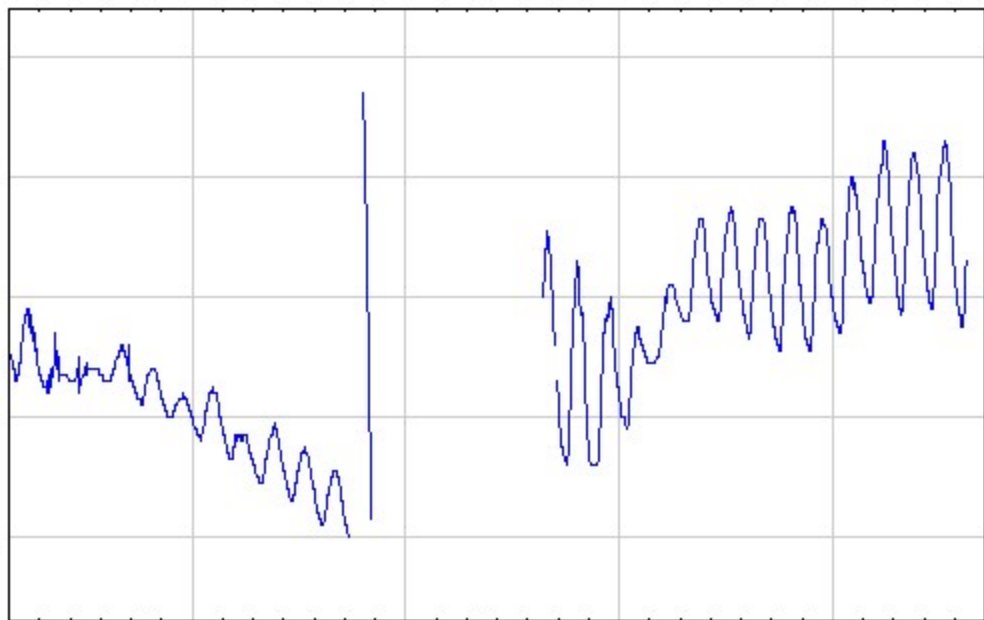
May 20

May 27

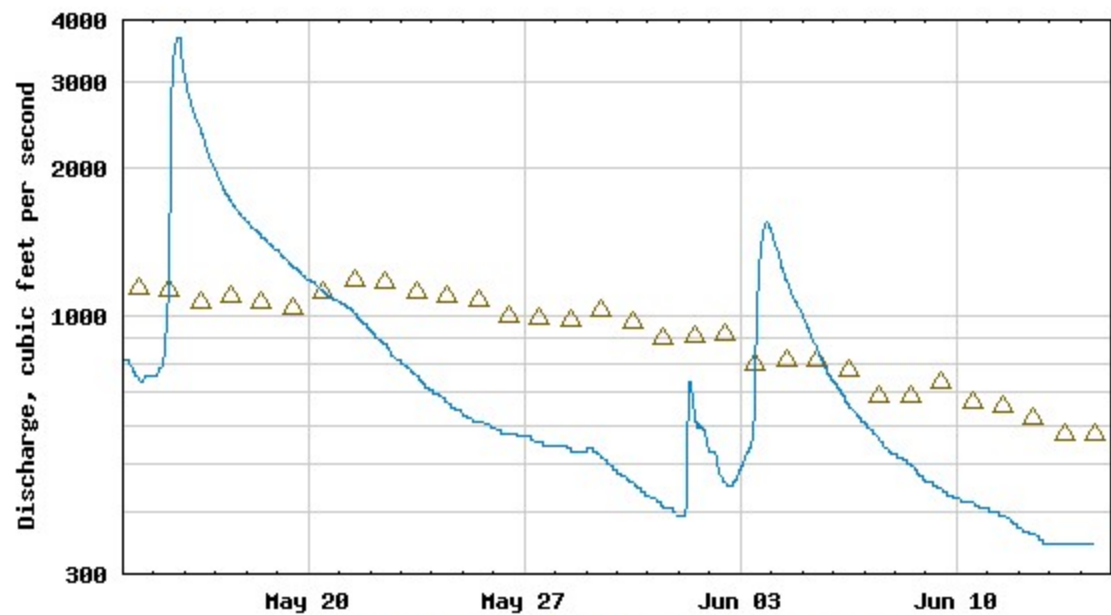
Jun 03

Jun 10

---- Provisional Data Subject to Revision ----



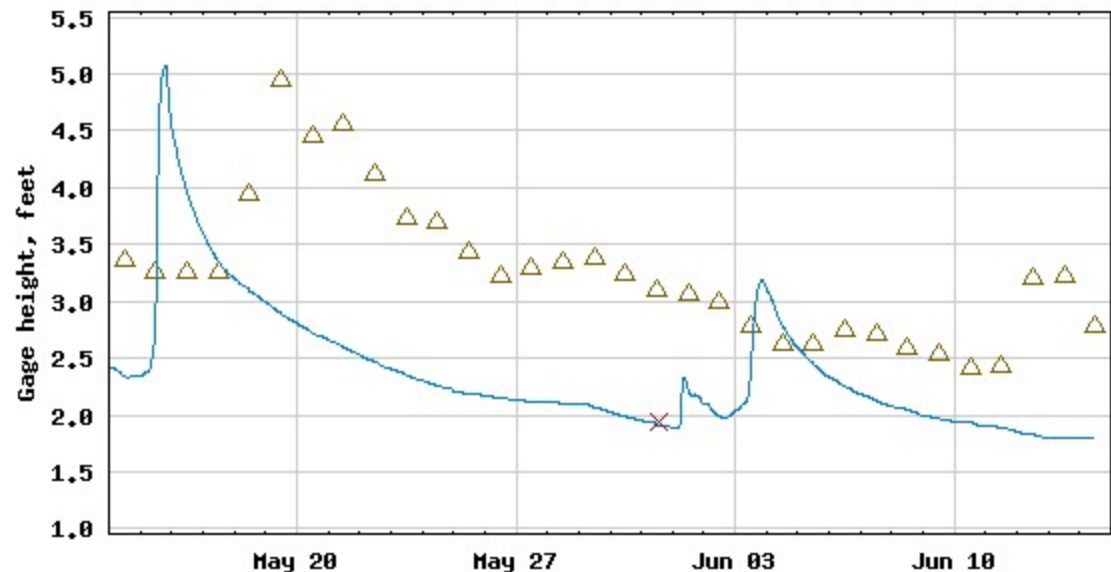
USGS 01608500 SOUTH BRANCH POTOMAC RIVER NEAR SPRINGFIELD, WV



---- Provisional Data Subject to Revision ----

△ Median daily statistic (82 years) — Discharge

USGS 01608500 SOUTH BRANCH POTOMAC RIVER NEAR SPRINGFIELD, WV



---- Provisional Data Subject to Revision ----

- △ Median daily statistic (4 years)
- × Measured gage height
- Gage height