



WVDA Water Quality Monitoring

West Virginia's Potomac Watershed



Potomac River Drainage Basin



Parameters

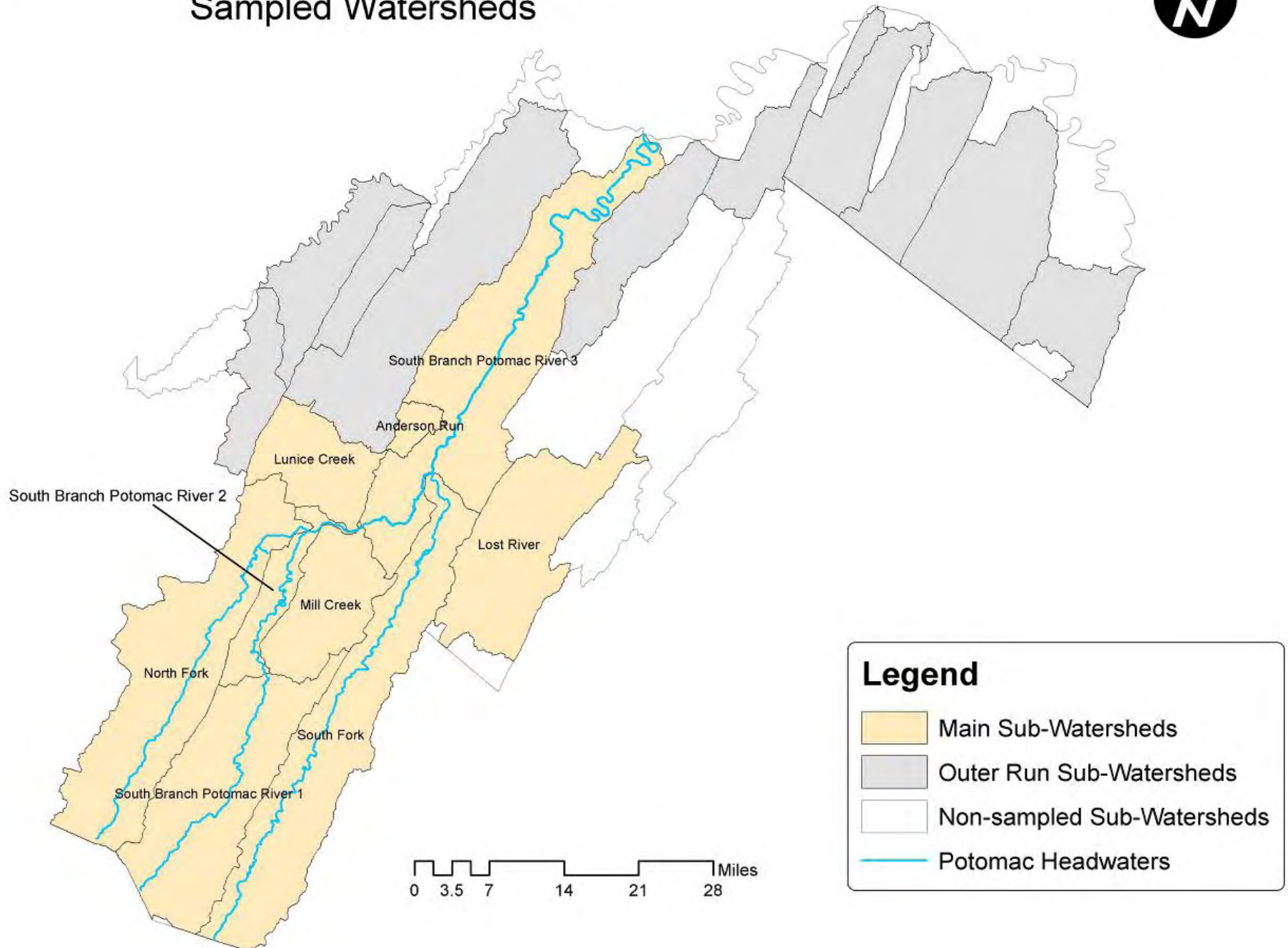
- Ammonia
- Nitrate
- Nitrite
- Phosphorous
- Orthophosphate
- TKN
- Atrazine
- Fecal Coliform
- TSS
- Turbidity
- Conductivity
- Temperature
- DO
- pH

Timeframe

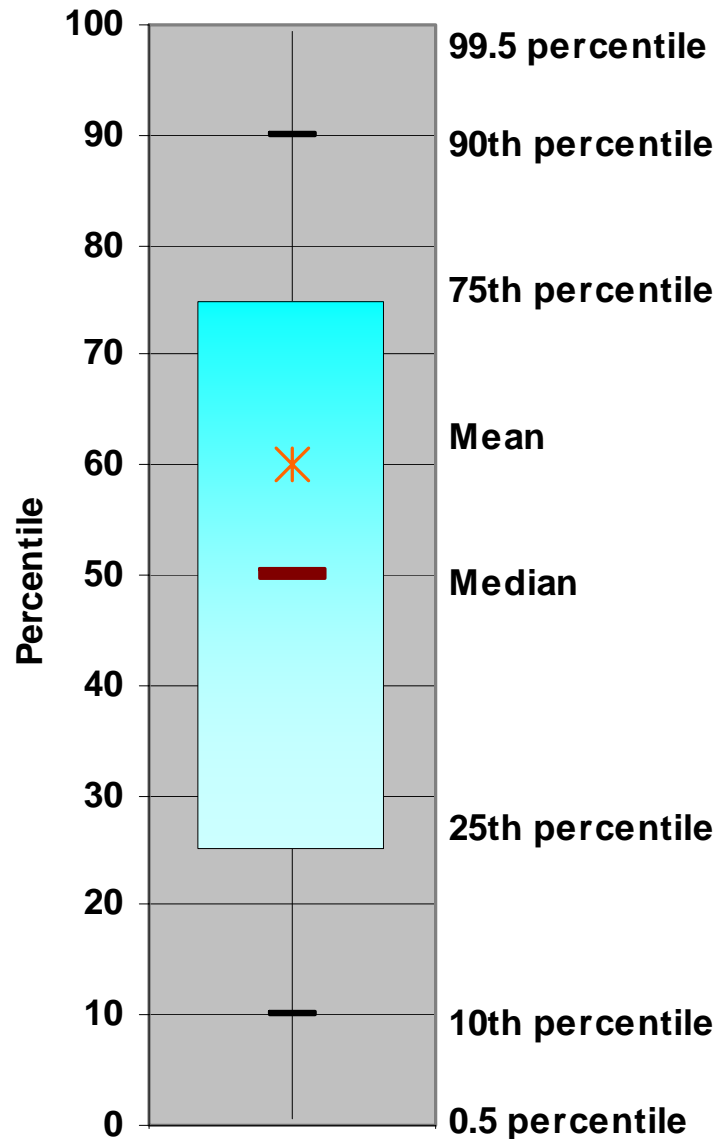
- July 1998 – June 2004 (Comprehensive Report)
- July 2004 – September 2005
- October 2005 - Current

Potomac Headwaters Region, West Virginia

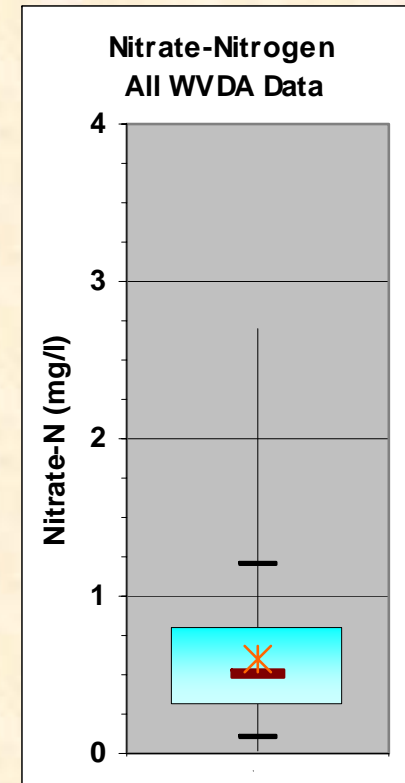
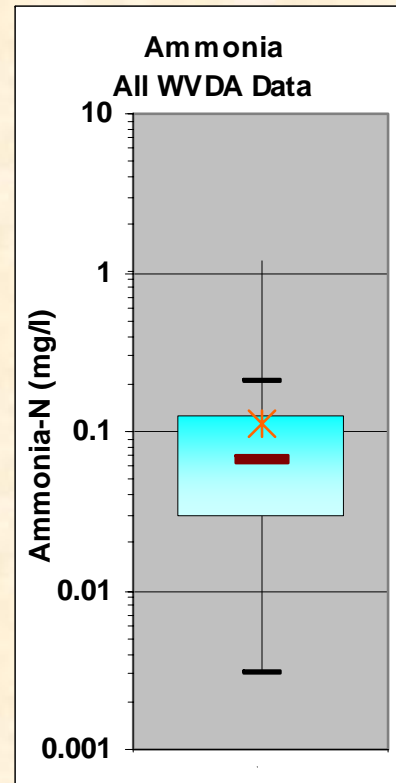
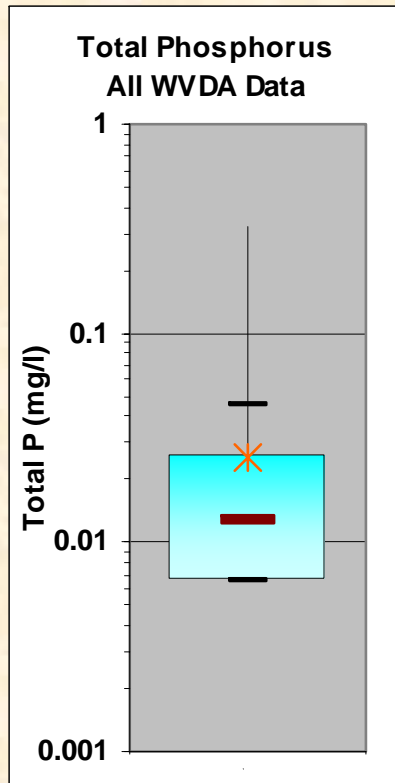
Sampled Watersheds



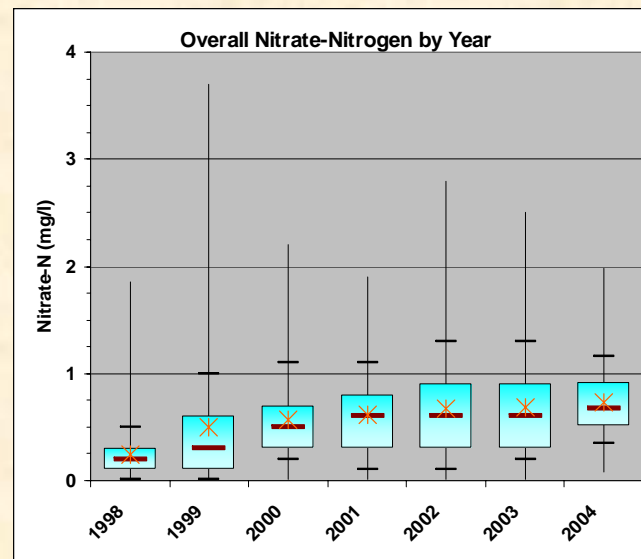
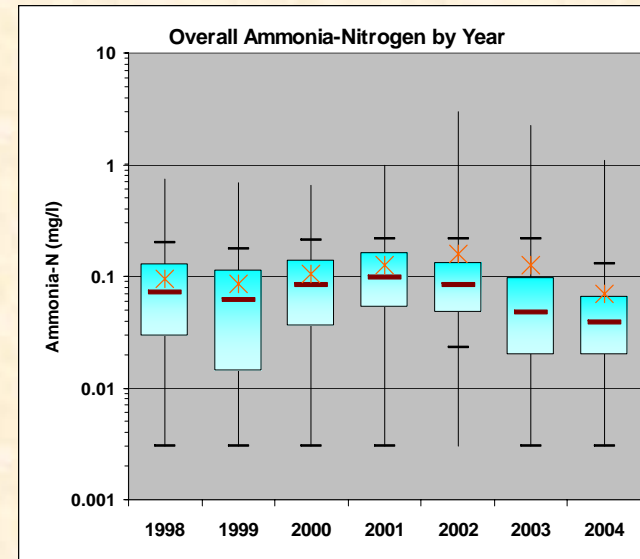
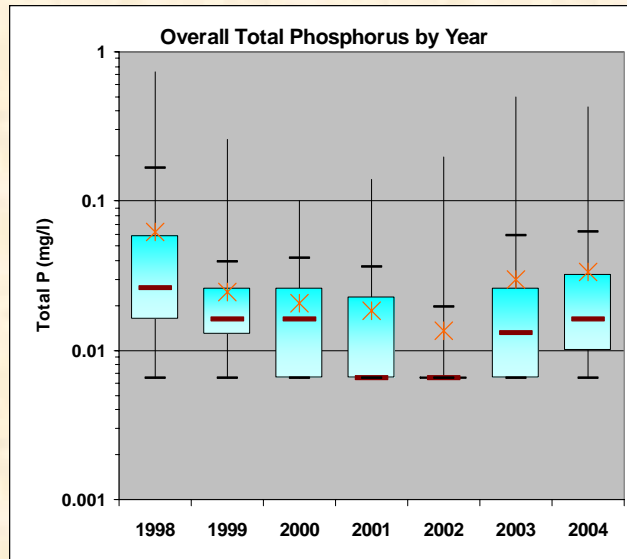
Sample Box Plot



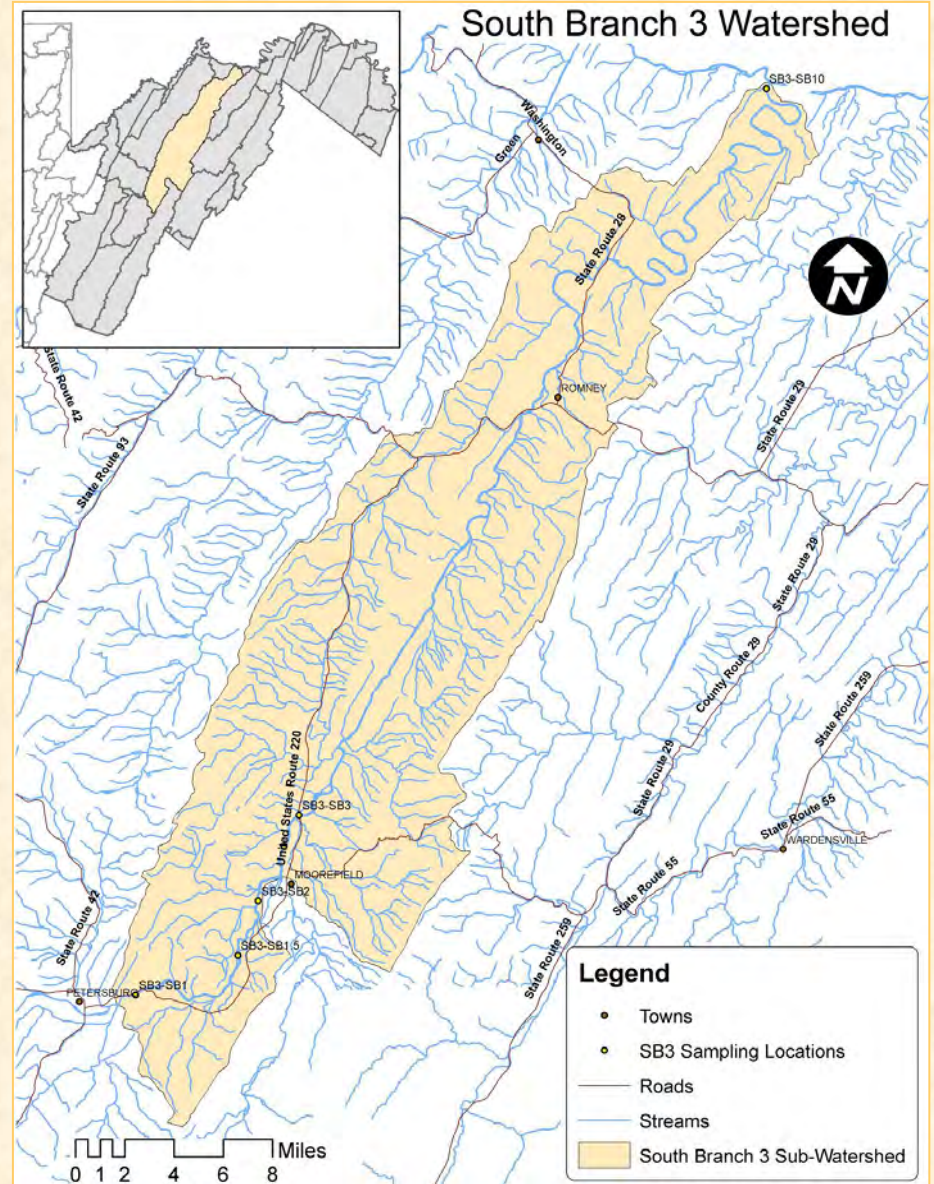
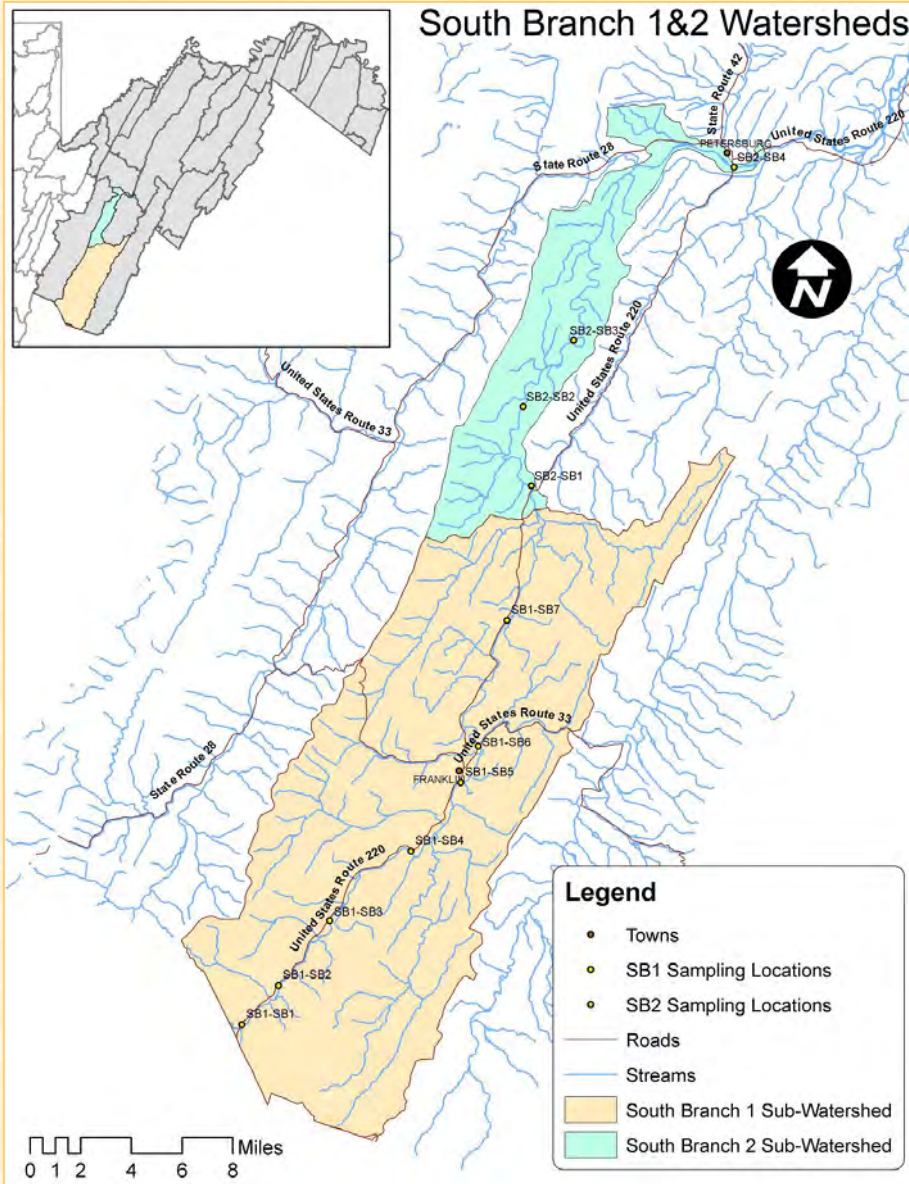
July 1998 – June 2004



July 1998 – June 2004



South Branch Watershed

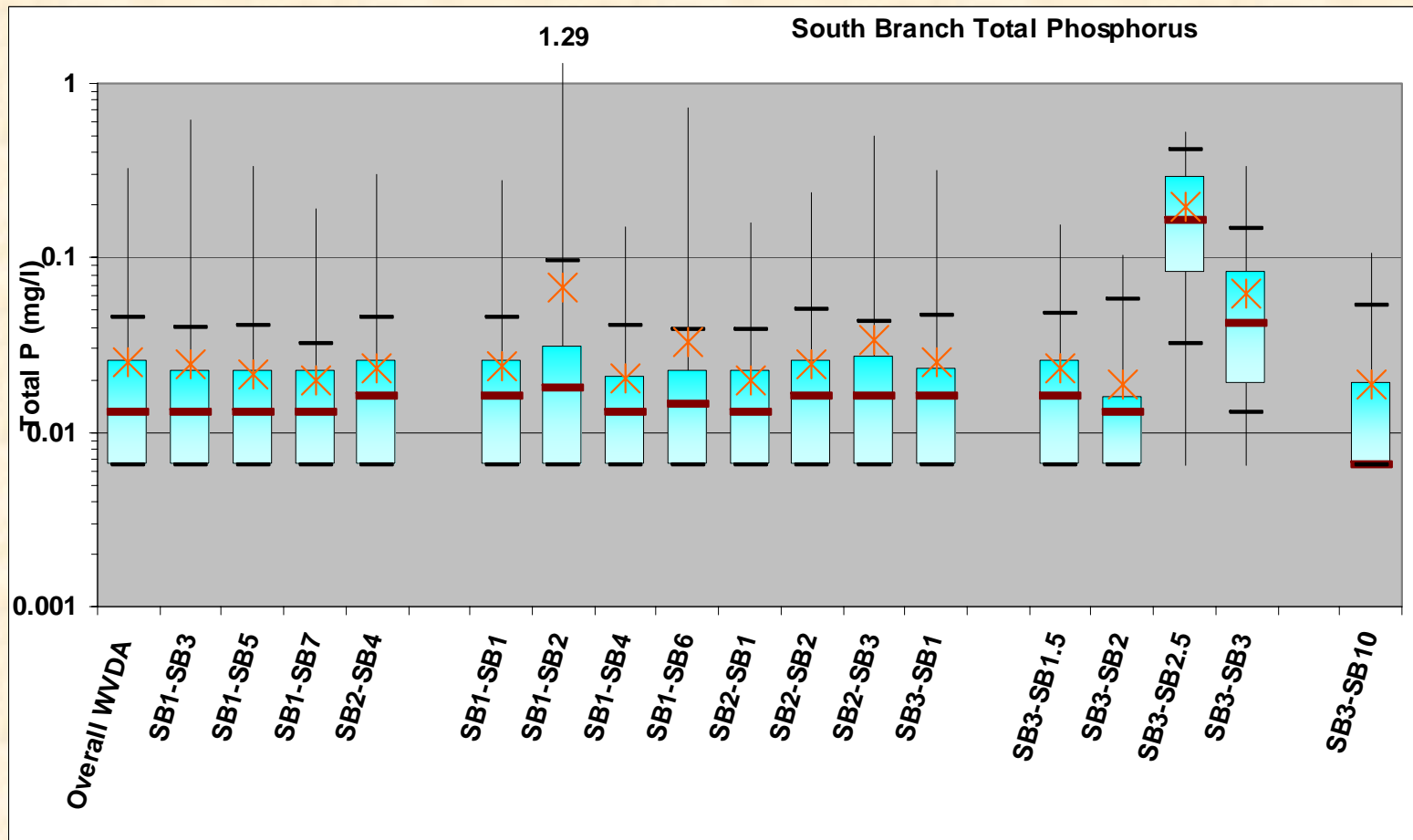


Sampling Frequency

SAMPLING SITE	SAMPLING YEAR						
	1998	1999	2000	2001	2002	2003	2004
Trend Sites							
Moyer Gap (SB1-SB3)	10	46	36	1	10	35	30
Franklin (SB1-SB5)	10	46	36	1	10	35	30
Ruddle (SB1-SB7)	11	46	36	1	10	35	30
Petersburg (SB2-SB4)	11	43	36	1	10	35	30
Other Sites							
Va Line (SB1-SB1)	10	47	36	1	10	5	0
Cedar Springs (SB1-SB2)	10	28	0	1	10	35	30
Rock Quarry (SB1-SB4)	10	29	0	1	10	35	30
River Gap (SB1-SB6)	10	29	0	1	10	5	0
Upper Tract (SB2-SB1)	10	29	6	0	4	33	30
Smoke Hole (SB2-SB2)	10	37	31	1	11	7	0
Big Bend (SB2-SB3)	11	19	0	1	9	3	0
Welton Park (SB3-SB1)	11	25	0	1	9	35	30
Sites Near and Below Moorefield							
Potomac Valley View (SB3-SB1.5)	0	0	0	0	0	30	30
Buzzard Ford Bridge (SB3-SB2)	0	0	0	0	0	30	30
Below Moorefield (SB3-SB2.5)	0	0	0	0	0	30	30
Old Fields Bridge (SB3-SB3)	6	0	0	0	0	30	30
Green Springs (SB3-SB10)	0	4	12	12	21	17	6

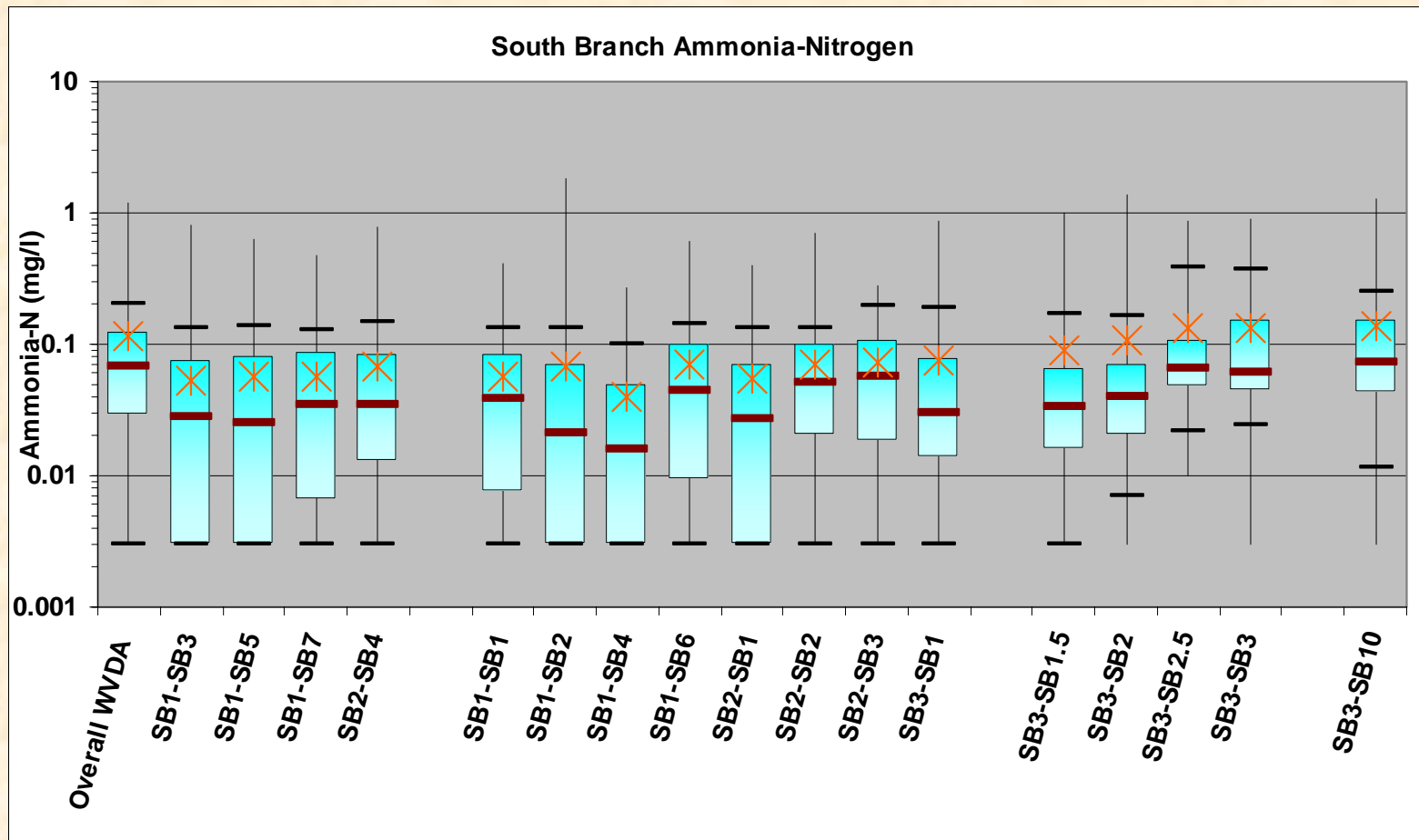
July 1998 – June 2004

South Branch: Total Phosphorus



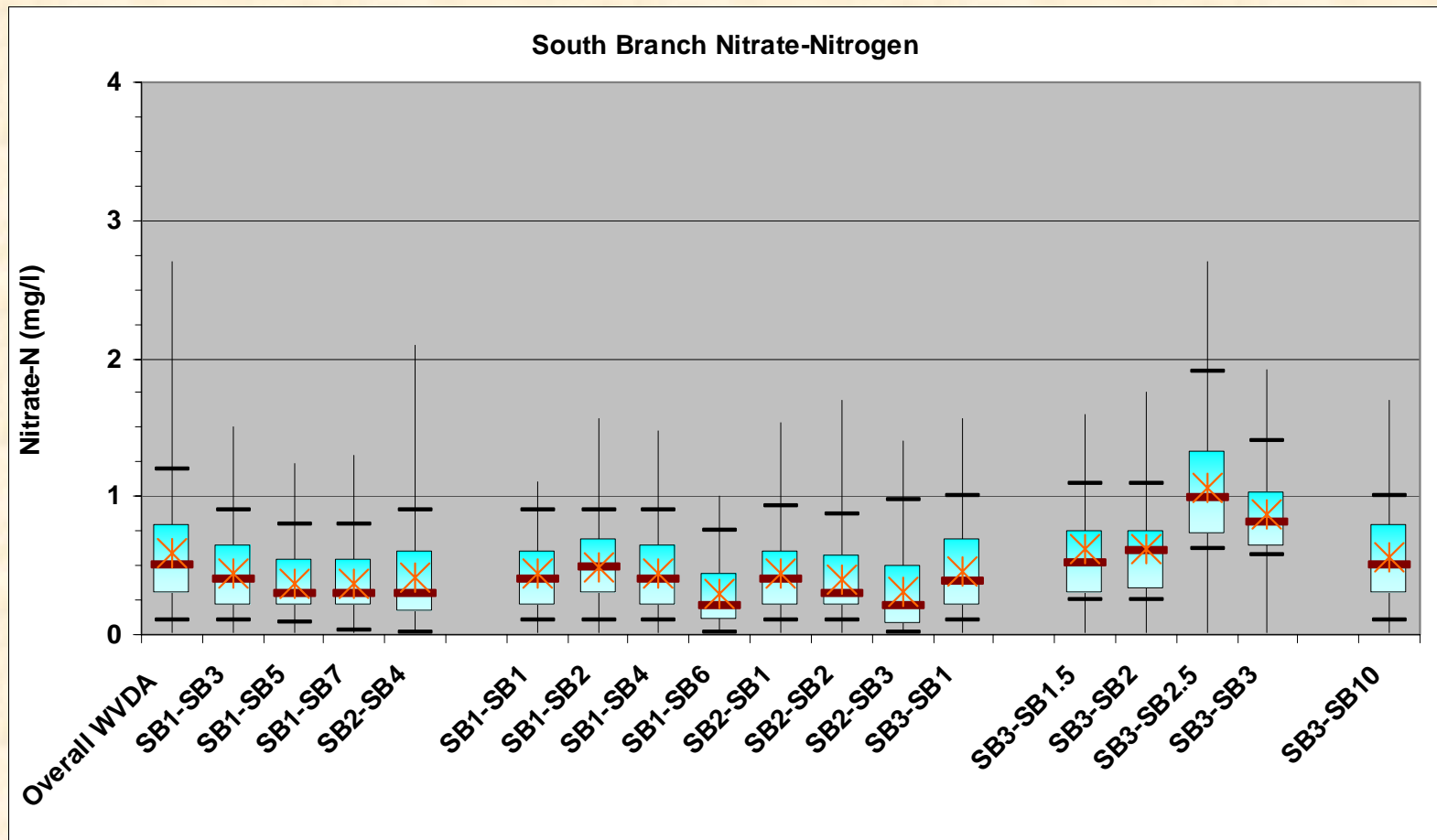
July 1998 – June 2004

South Branch: Ammonia Nitrogen

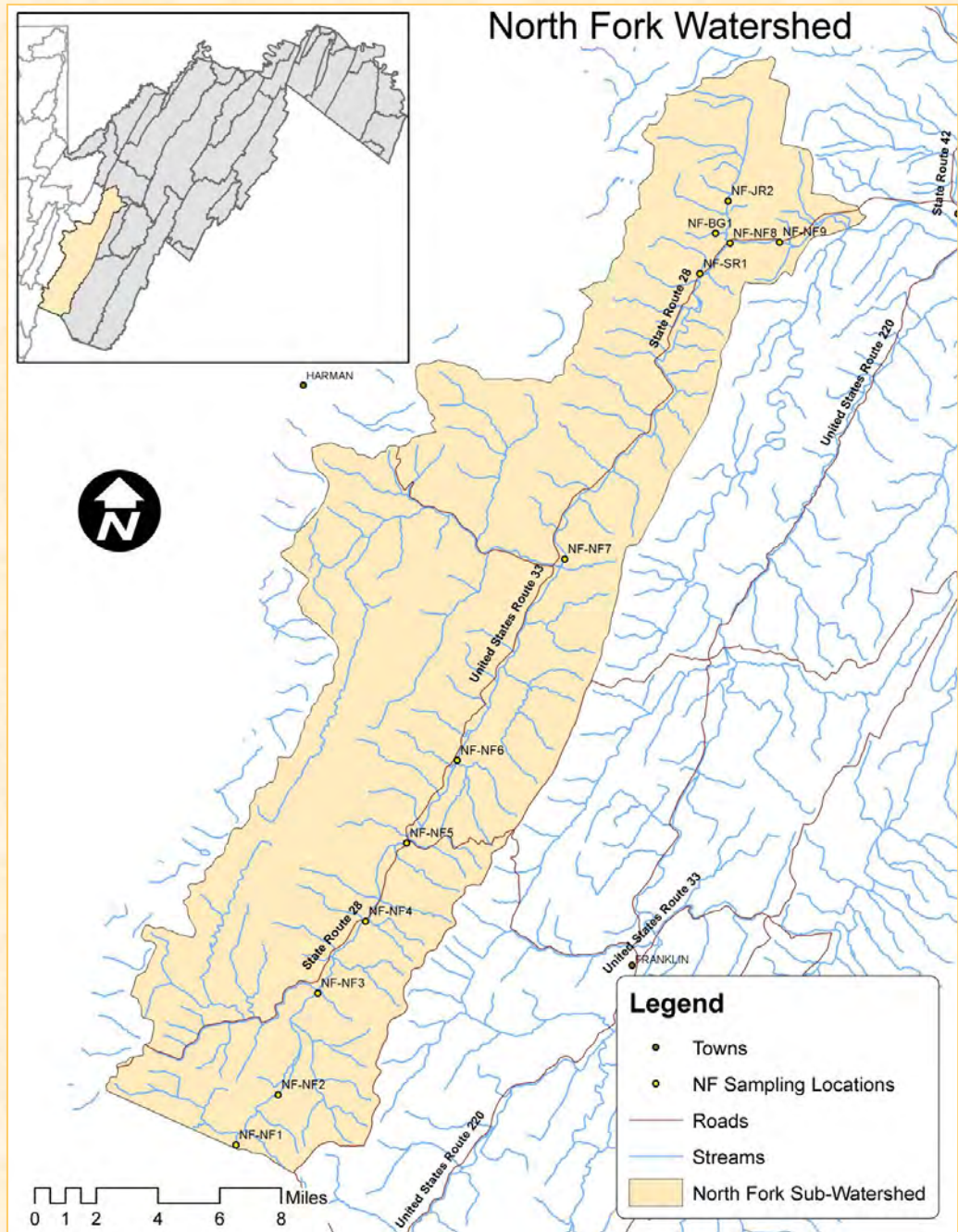


July 1998 – June 2004

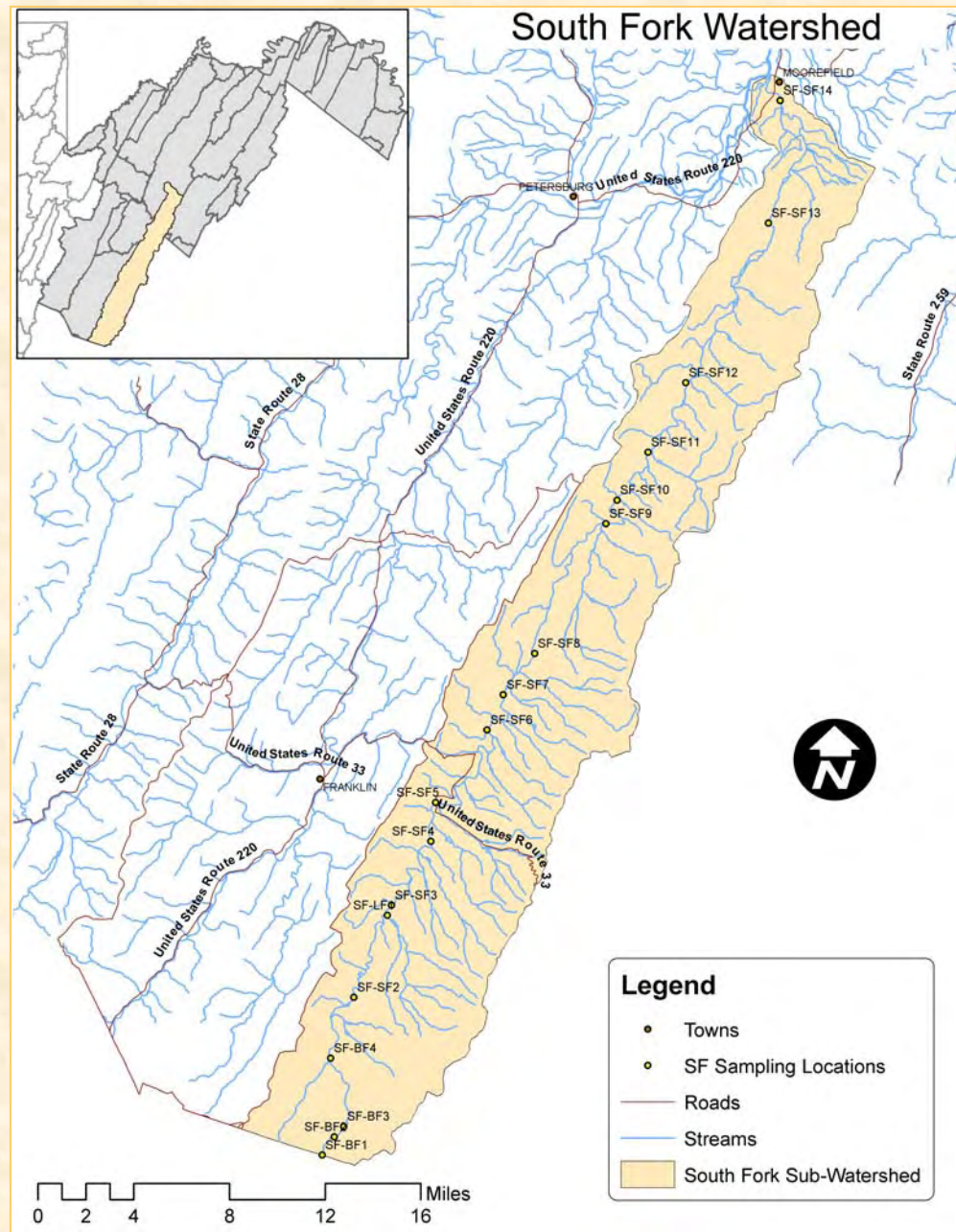
South Branch: Nitrate Nitrogen

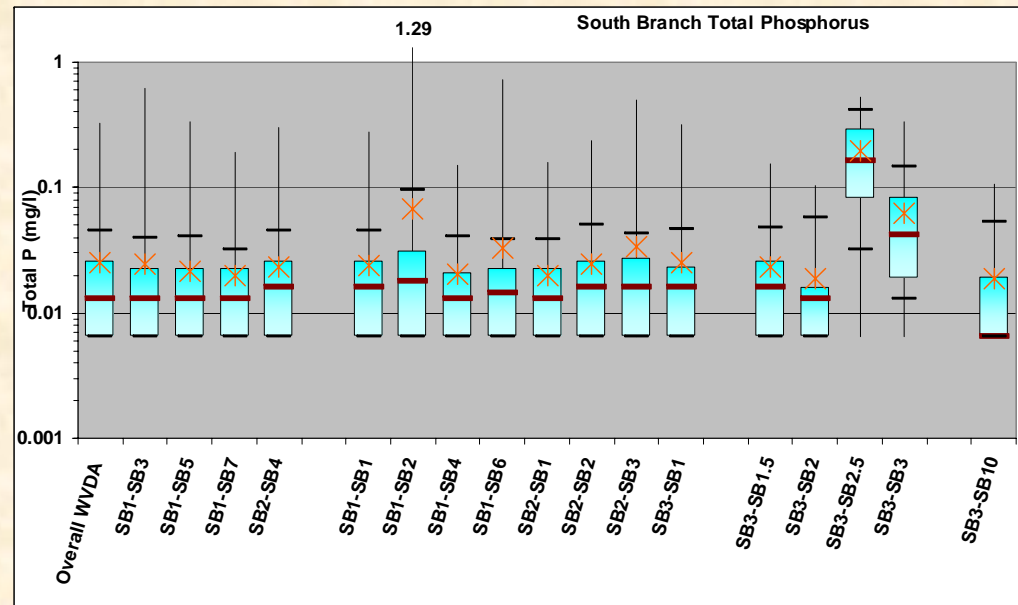
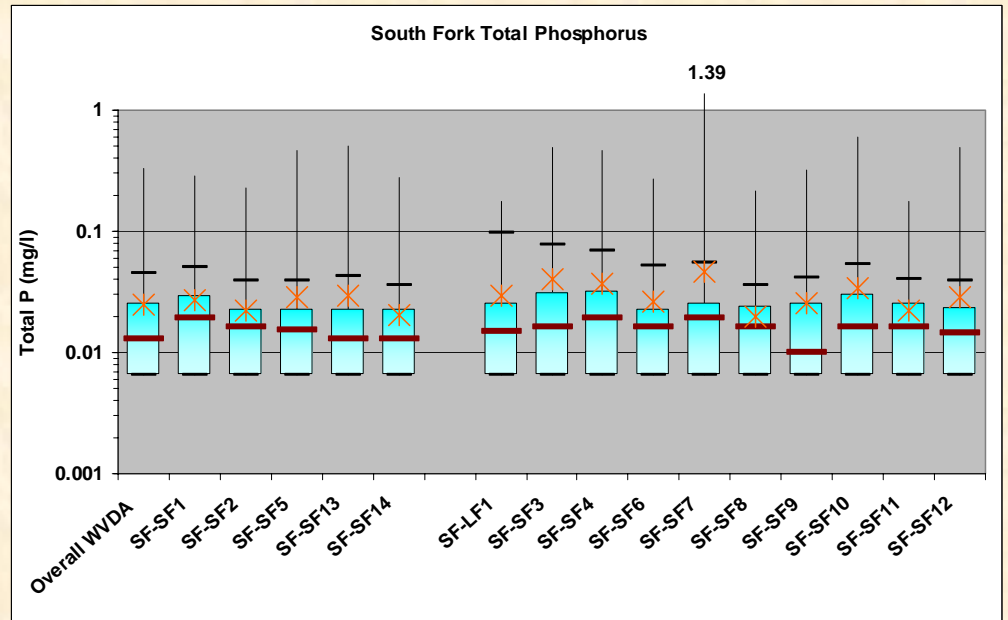
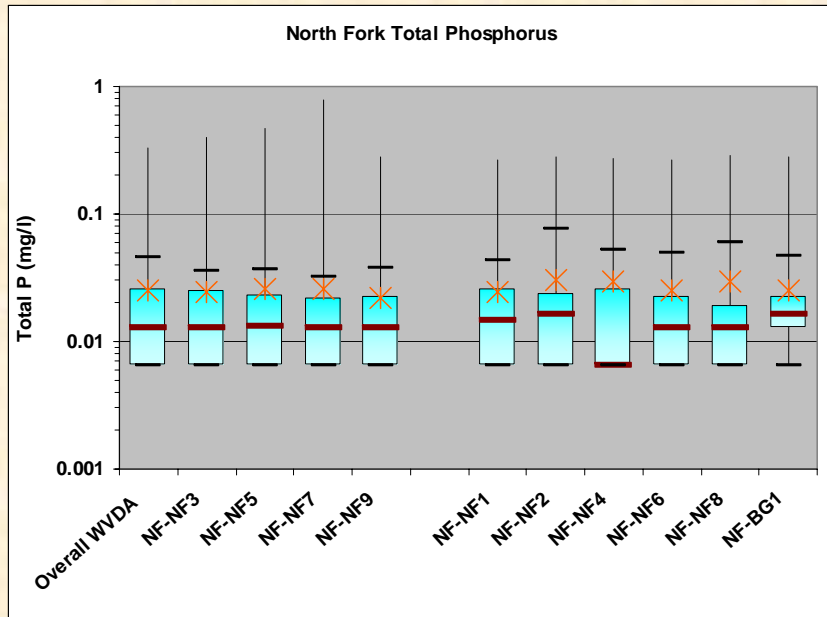


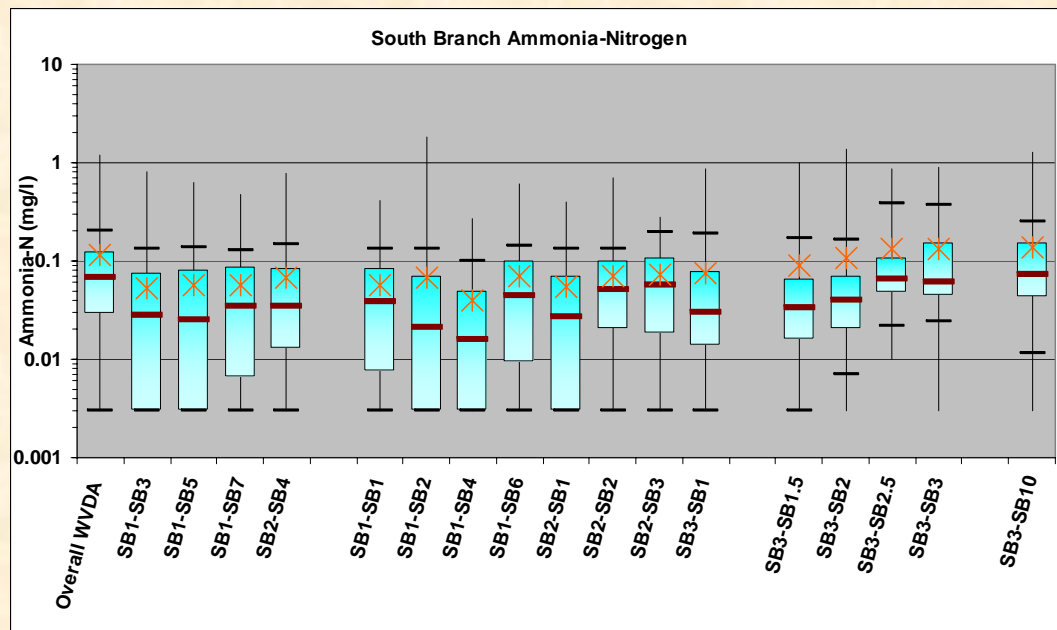
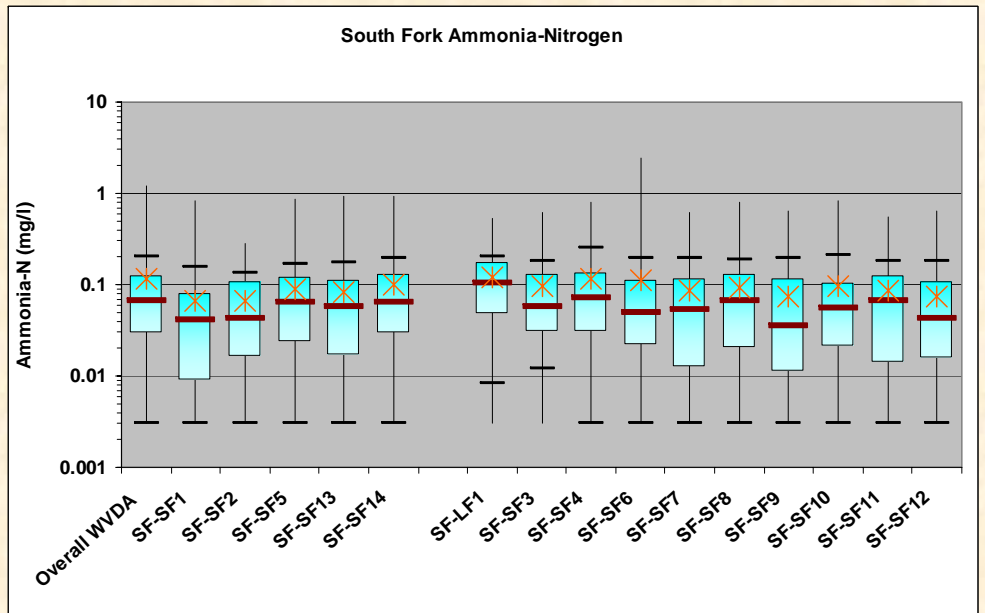
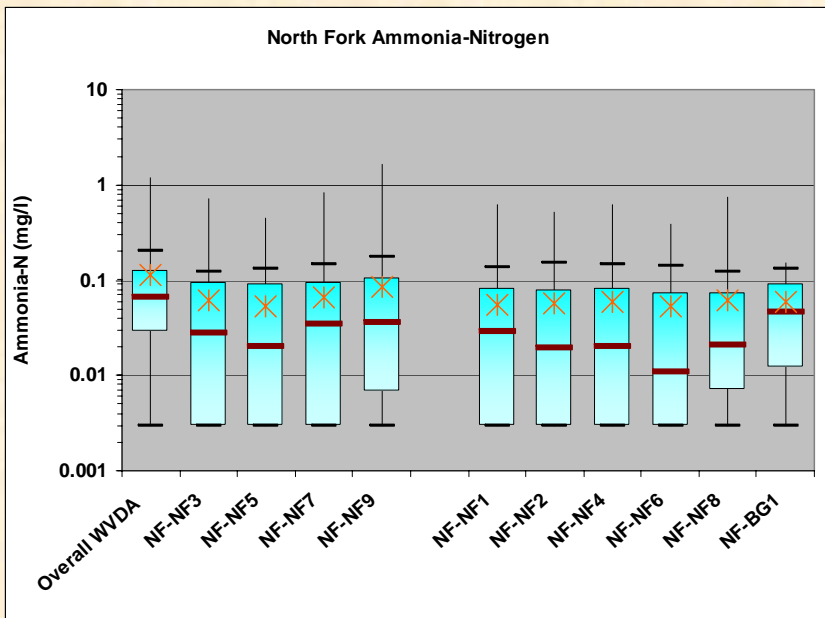
North Fork Watershed

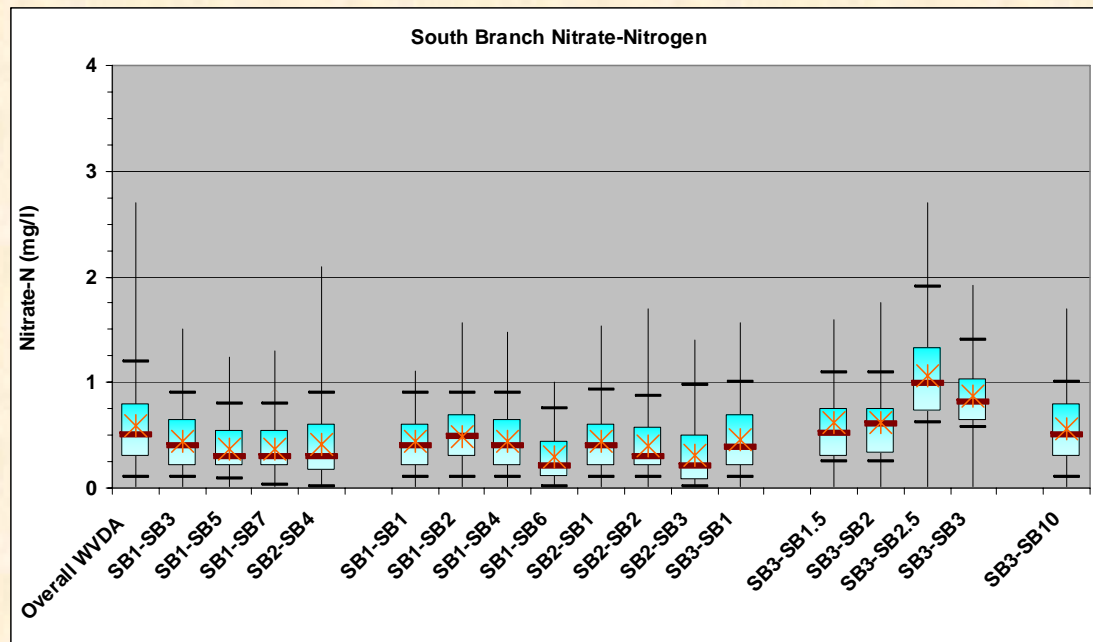
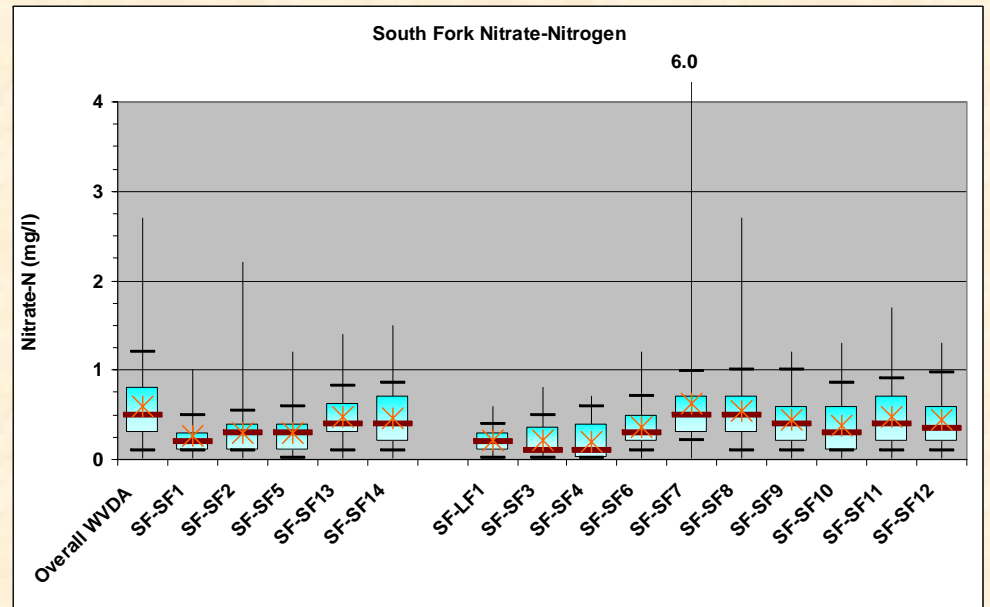
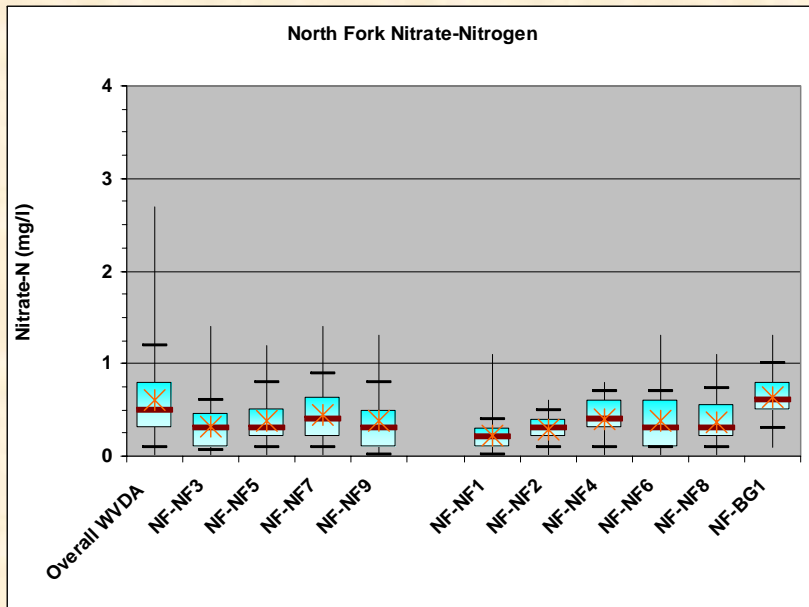


South Fork Watershed

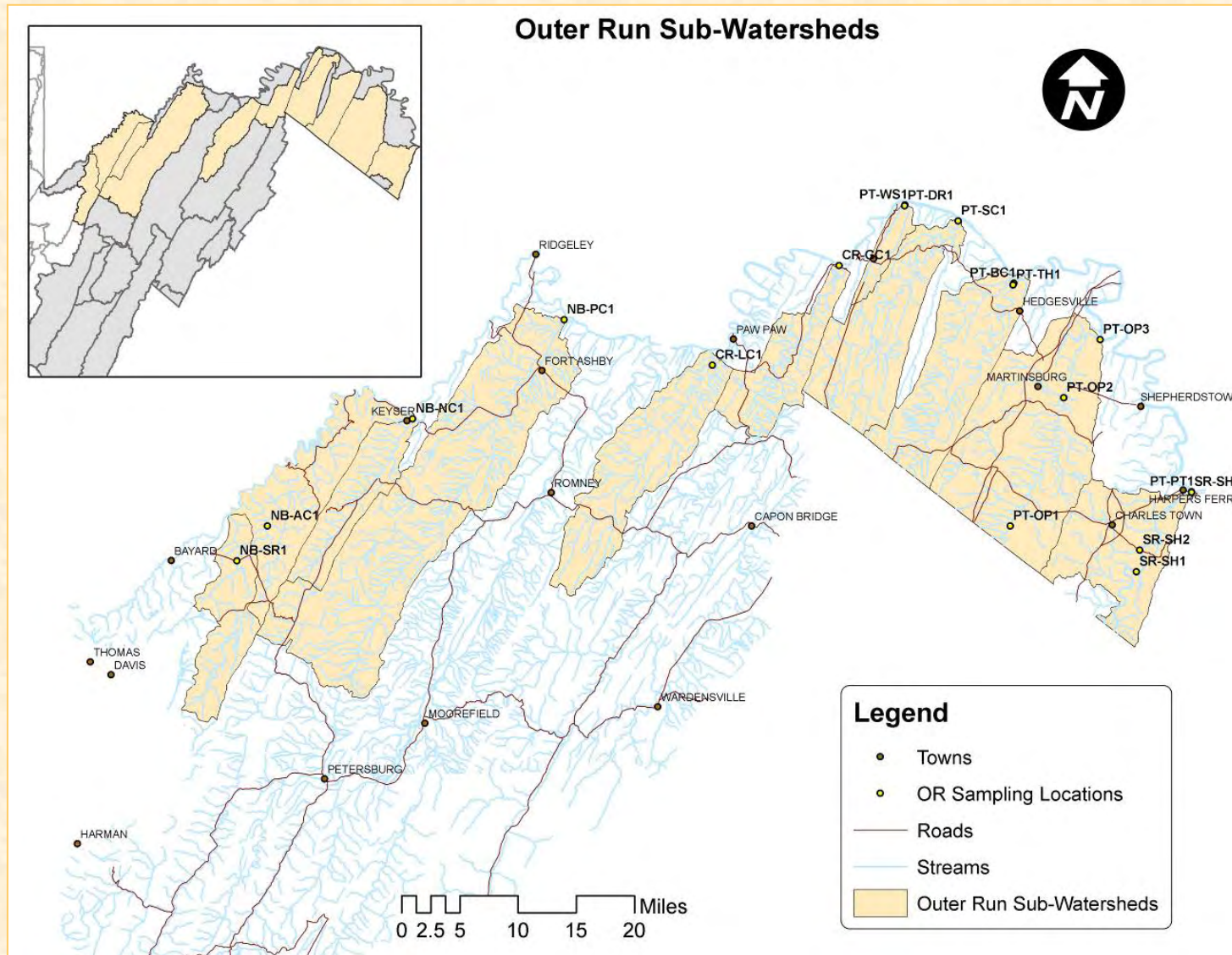


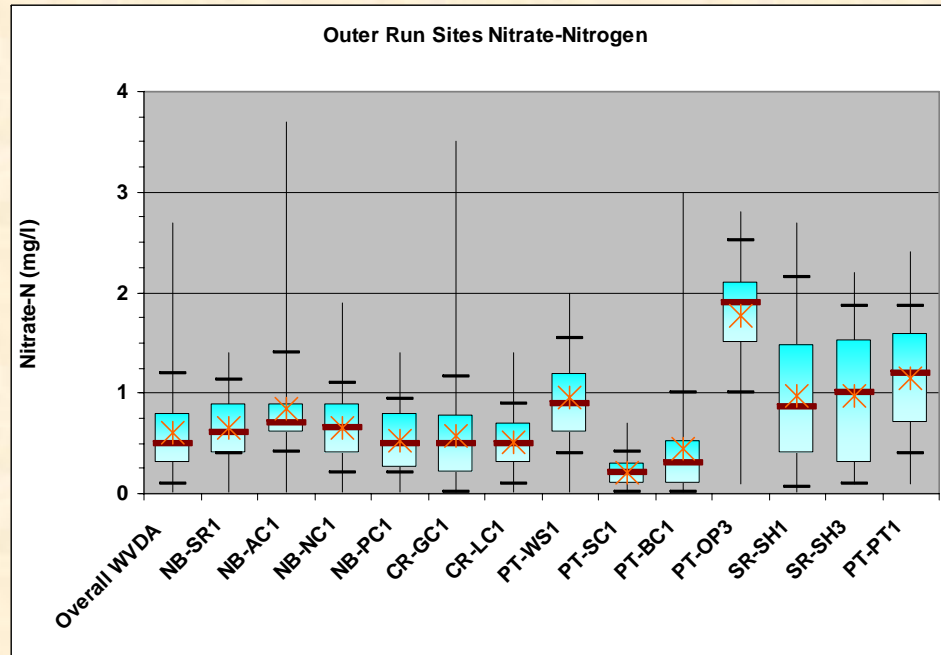
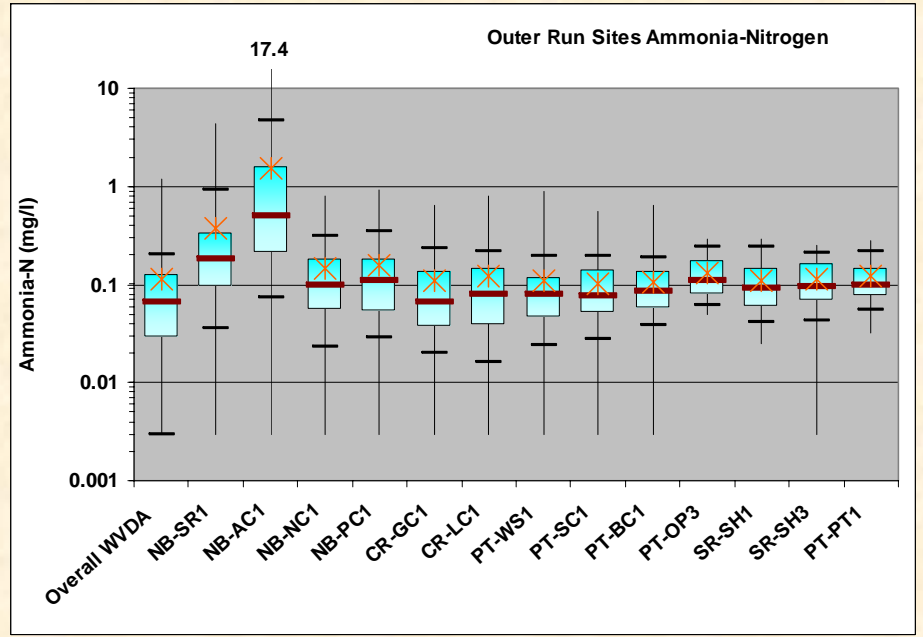
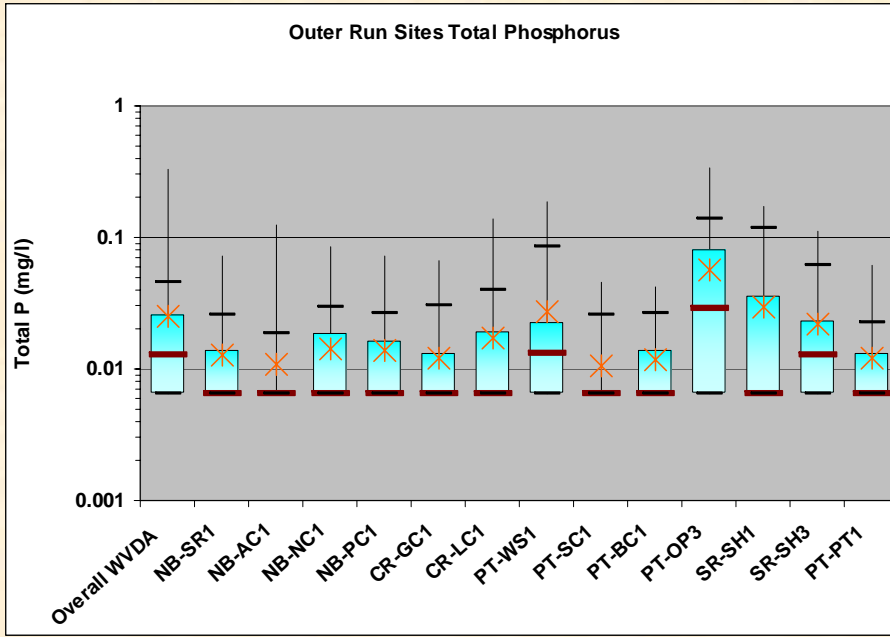






Outer Run Sub-Watersheds





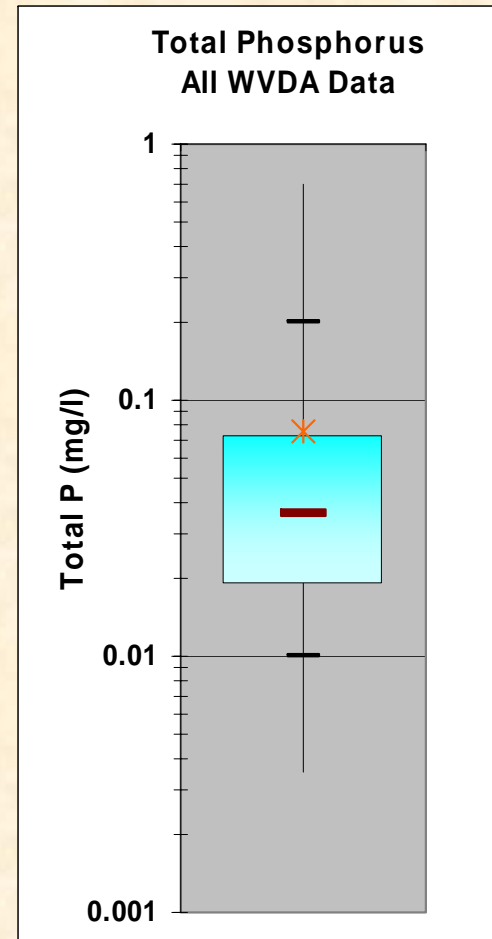
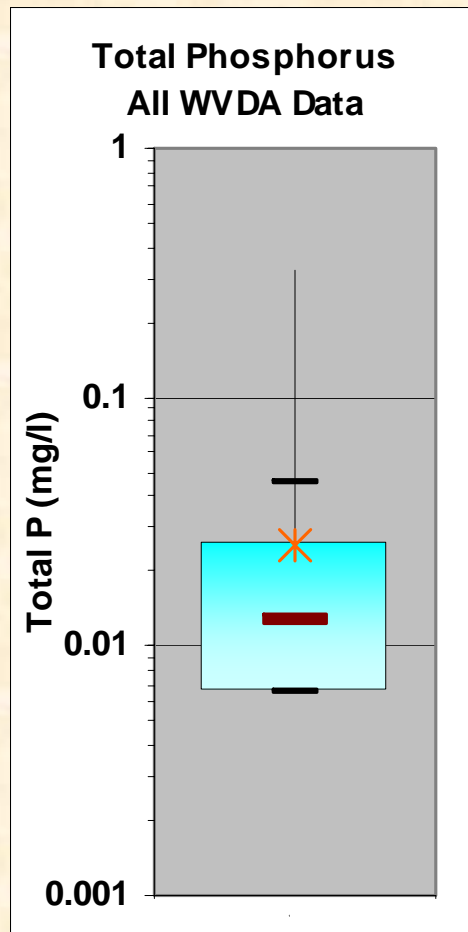
July 2004 – September 2005



July 1998 –
June 2004

vs.

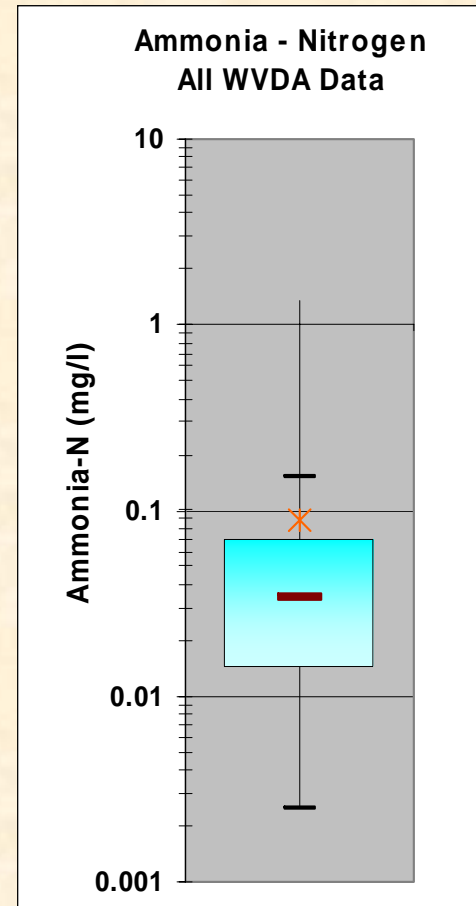
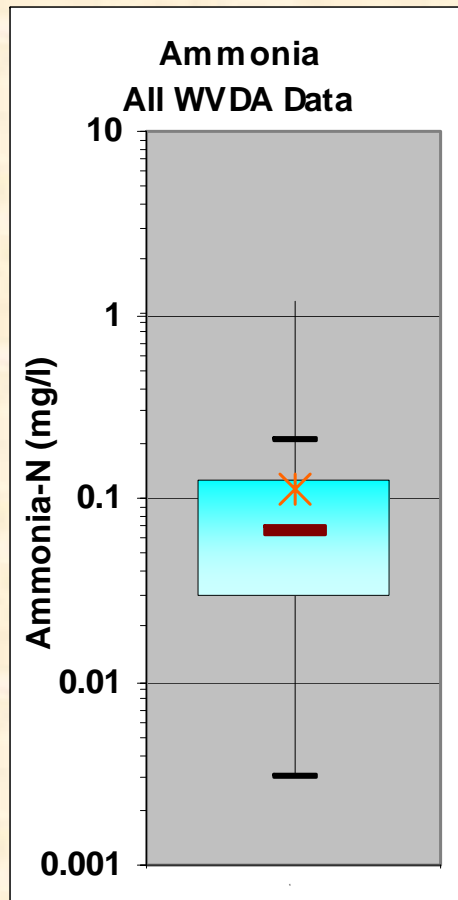
July 2004 –
Sept. 2005



July 1998 –
June 2004

vs.

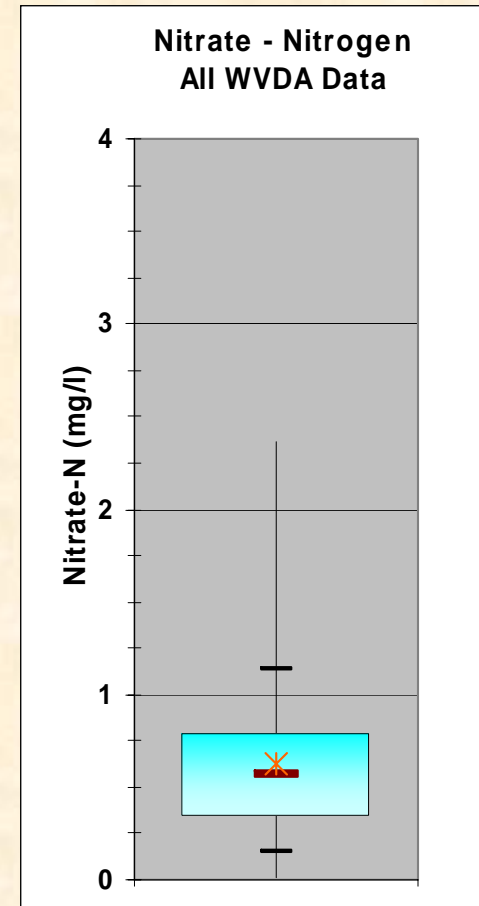
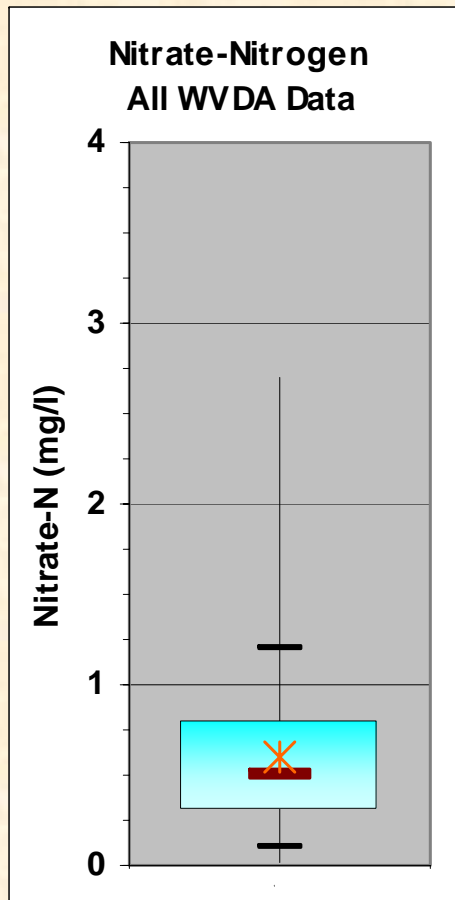
July 2004 –
Sept. 2005



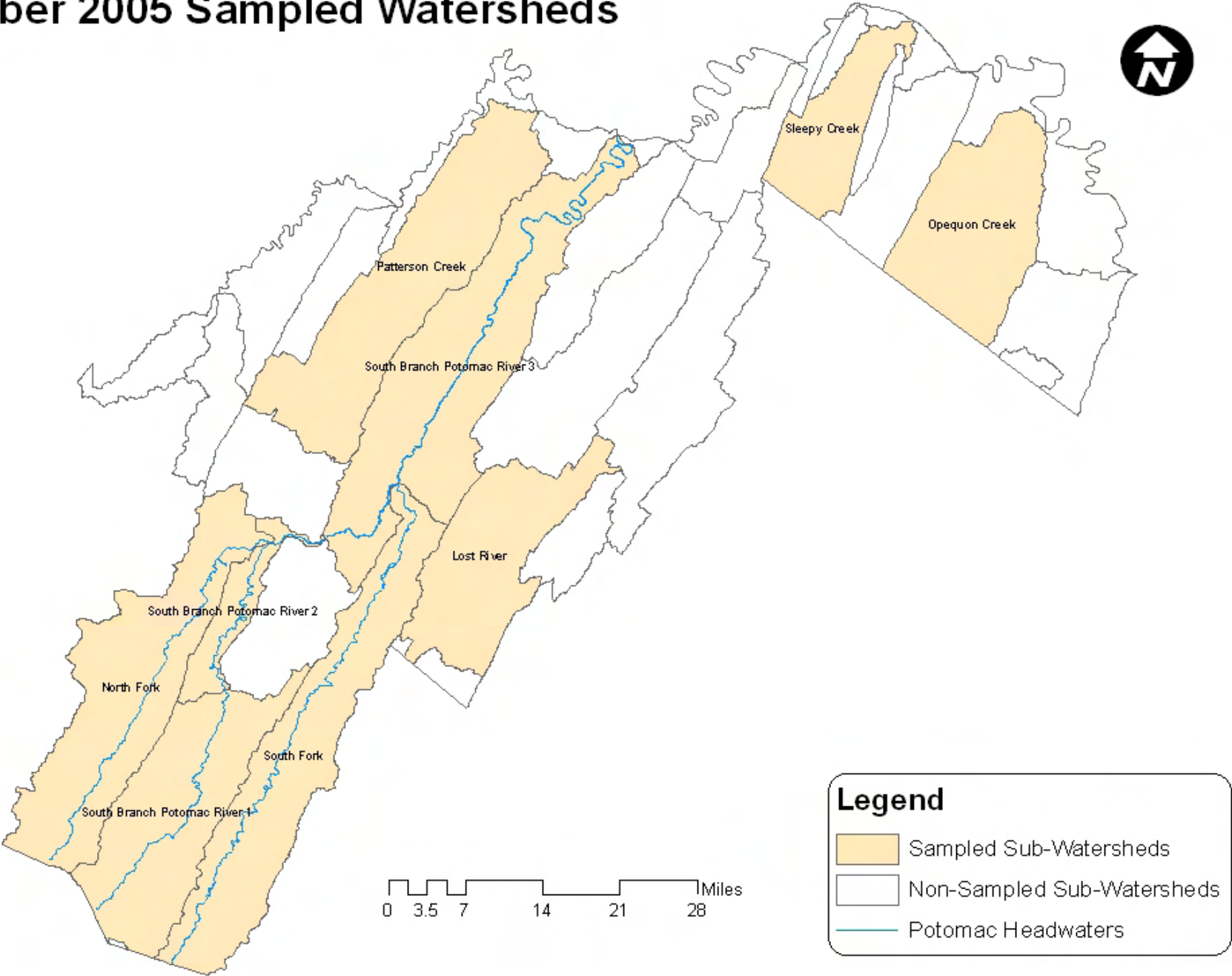
July 1998 –
June 2004

vs.

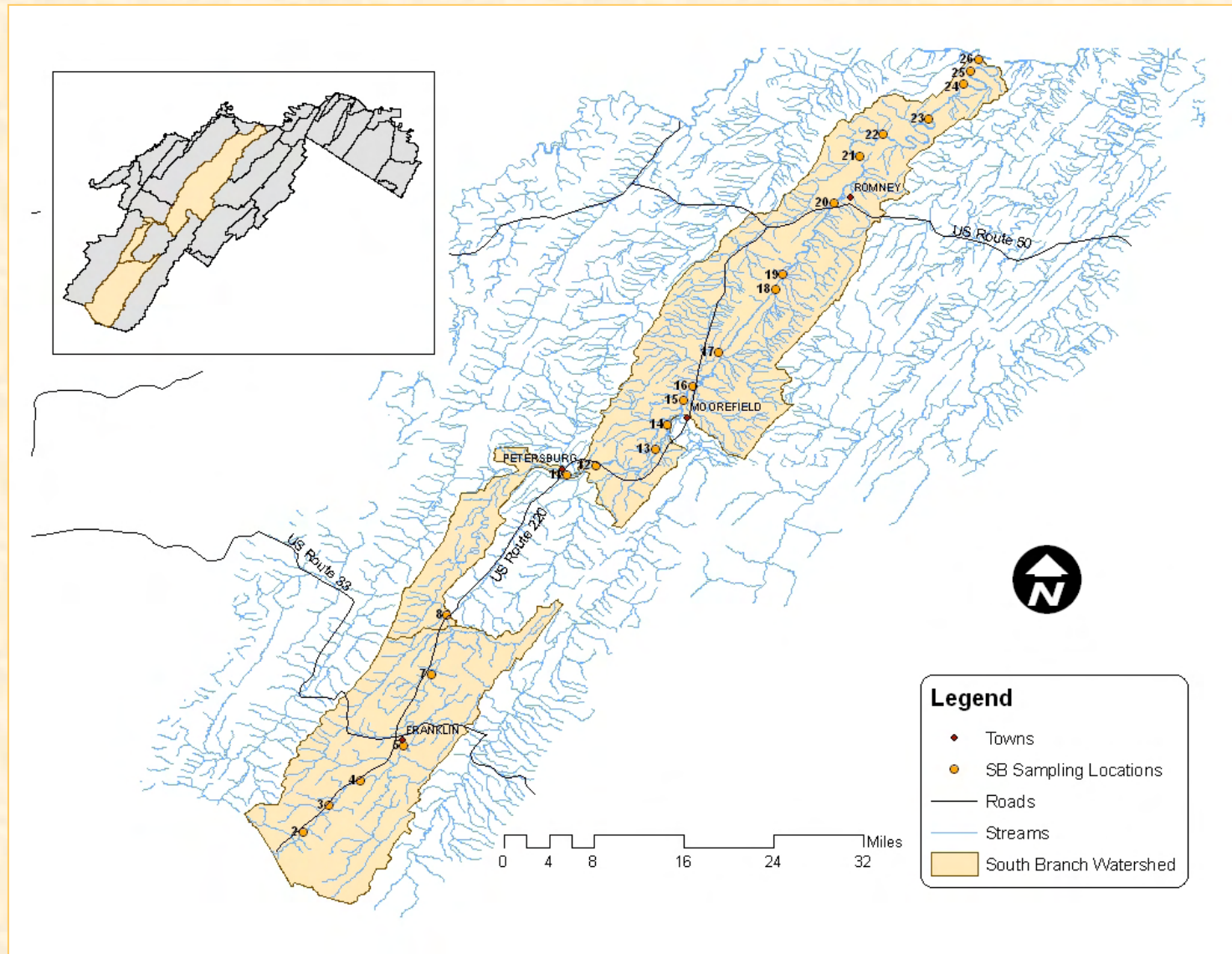
July 2004 –
Sept. 2005



October 2005 Sampled Watersheds



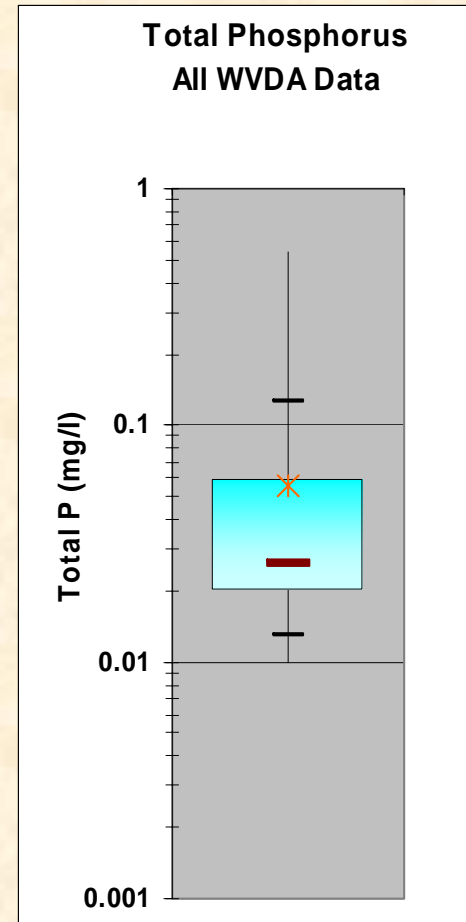
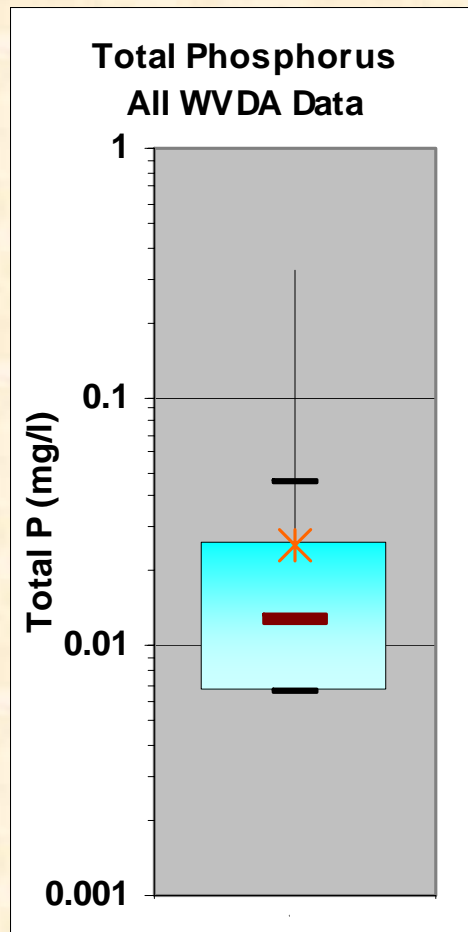
South Branch Watershed



July 1998 –
June 2004

vs.

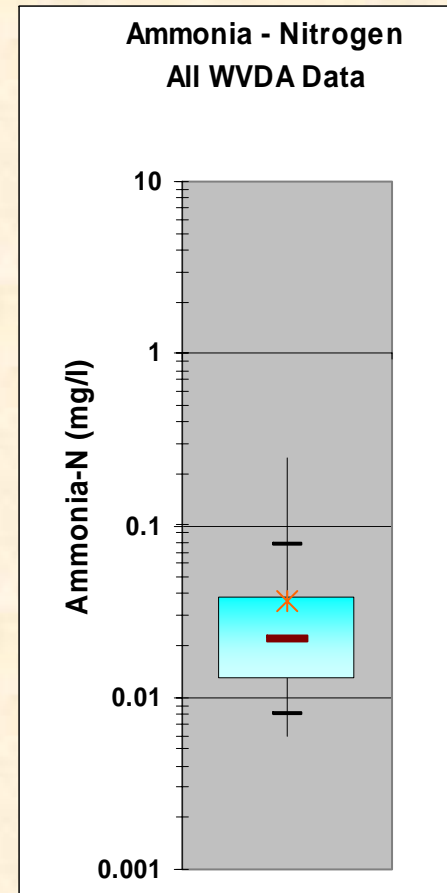
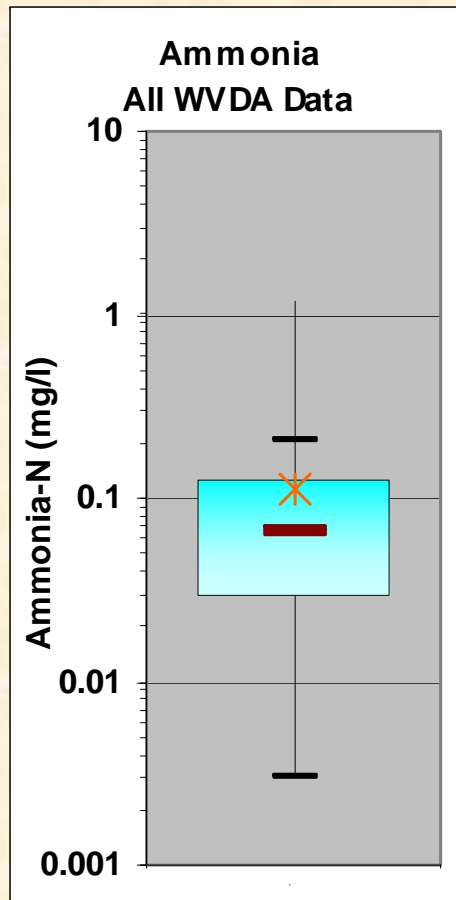
Oct 2005 –
May 25, 2006



July 1998 –
June 2004

vs.

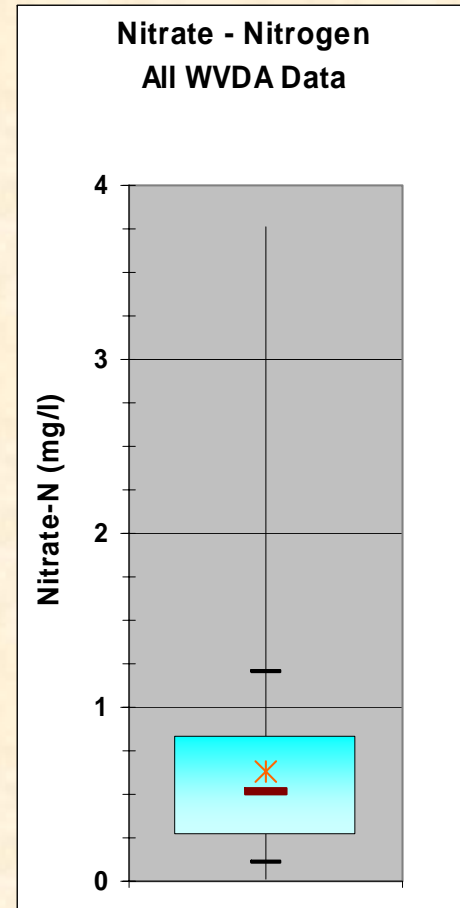
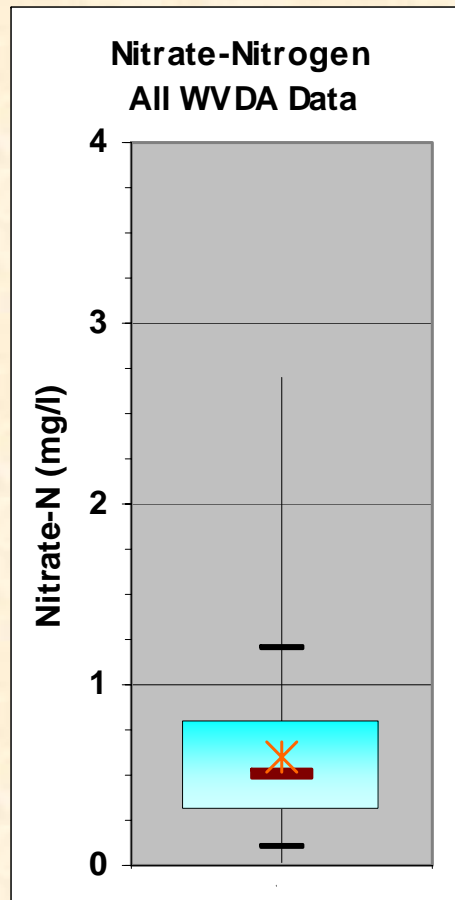
Oct 2005 –
May 25, 2006



July 1998 –
June 2004

vs.

Oct 2005 –
May 25, 2006



Data Preview



May 2002

Site #	Site Description	Date	WVDA Time	Total P	Ammonia (NH3-N)	Nitrate (NO3-N)
SB1-SB1	Va Line	4/8/2002	945	0	0.083	0.4
SB1-SB2	Cedar Springs	4/8/2002	949	0	1.84	0.3
SB1-SB3	Moyer Gap	4/8/2002	954	0.0032	0.091	0.3
SB1-SB4	Rock Quarry	4/8/2002	959	0	0.076	0.3
SB1-SB5	Franklin	4/8/2002	1005	0	0.077	0.3
SB1-SB6	River Gap	4/8/2002	1014	0	0.1	0.3
SB1-SB7	Ruddle	4/8/2002	1029	0.0032	0.094	0.2
SB1-SB8	Upper Tract	4/8/2002	1038	0.0032	0.083	0.2
SB2-SB2	Smoke Hole	4/8/2002	1044	0.0032	0.088	0.2
SB2-SB3	Big Bend	4/8/2002	1056	0	0.084	0.1
SB2-SB4	Petersburg	4/8/2002	1141	0	0.095	0.4
SB3-SB1	Welton Park	4/8/2002	1147	0	0.103	0.4
SB3-SB1	Welton Park	4/8/2002	1147	0	0.106	0.4
SB1-SB1	Va Line	5/9/2002	800	0	0.039	0.6
SB1-SB2	Cedar Springs	5/9/2002	810	0.0065	0.04	0.5
SB1-SB3	Moyer Gap	5/9/2002	825	0	0.045	0.5
SB1-SB4	Rock Quarry	5/9/2002	835	0	0.069	0.4
SB1-SB5	Franklin	5/9/2002	850	0	0.022	0.5
SB1-SB6	River Gap	5/9/2002	901	0	0.024	0.5
SB1-SB7	Ruddle	5/9/2002	912	0	0.025	0.6
SB1-SB8	Upper Tract	5/9/2002	926	0	0.024	0.6
SB2-SB2	Smoke Hole	5/9/2002	936	0	0.055	0.6
SB2-SB3	Big Bend	5/9/2002	946	0.0065	0.053	0.6
SB2-SB4	Petersburg	5/9/2002	1019	0	0.071	0.5
SB3-SB1	Welton Park	5/9/2002	1025	0	0.081	0.5
SB3-SB1	Welton Park	5/9/2002	1025	0	0.08	0.5
SB1-SB1	Va Line	6/6/2002	940	0.0065	0.018	0.3
SB1-SB2	Cedar Springs	6/6/2002	945	0.0065	0.019	0.3
SB1-SB3	Moyer Gap	6/6/2002	951	0	0.014	0.3
SB1-SB4	Rock Quarry	6/6/2002	959	0	0.014	0.3
SB1-SB5	Franklin	6/6/2002	1006	0	0.022	0.2
SB1-SB6	River Gap	6/6/2002	1012	0.0065	0.034	0.2
SB1-SB7	Ruddle	6/6/2002	1021	0	0.035	0.4
SB1-SB8	Upper Tract	6/6/2002	1035	0	0.029	0.4
SB2-SB2	Smoke Hole	6/6/2002	1039	0	0.036	0.4
SB2-SB3	Big Bend	6/6/2002	1048	0	0.028	0.4
SB2-SB4	Petersburg	6/6/2002	1135	0	0.031	0.4
SB3-SB1	Welton Park	6/6/2002	1141	0	0.026	0.5
SB3-SB1	Welton Park	6/6/2002	1141	0	0.025	0.5

May 2006

Site #	Site Description	Date	WVDA Time	USGS Time	USGS Gage Height	USGS Discharge	pH (Meter)	Field Temp (C)	DO	Total P	Ammonia (NH3-N)	Nitrate (NO3-N)
SB2	Cedar Springs	01-May-06	11:35				8.4	13.1	12.3	.029	<.015	.32
SB3	Moyer Gap	01-May-06	11:20				8.4	13.3	13.12	.010	<.015	.32
SB4	Rock Quarry	01-May-06	11:05				8.4	13	12.25	.052	<.015	.30
SB5	Franklin	01-May-06	10:45	10:30	2.28	169	8.4	12.6	12.32	.010	<.015	.20
SB7	Ruddle	01-May-06	10:30				8.5	13.2	14.5	.029	<.015	.16
SB8	Upper Tract	01-May-06	10:15				8.2	12.8	13.57	.010	<.015	.22
SB11	Petersburg	01-May-06	9:45	9:30	4.68	636	7.6	14.2	11.26	<.009	<.015	.22
SB12	Welton Orch. Park	01-May-06	9:30				7.6	14.7	11.92	<.009	<.015	.29
SB13	Potomac Valley View	01-May-06	9:10				7.3	14	10.19	.010	<.015	.29
SB14	Buzzard Ford Bridge	01-May-06	8:50				7.2	14.4	10.04	.013	<.015	.29
SB15	Below Moorefield	01-May-06	8:30				7.1	14.2	10.18	.156	.018	.62
SB16	Old Fields Bridge	01-May-06	8:10	8:00	8.31		6.9	14.6	9.13	.068	<.015	.52
SB17	McNeil	01-May-06	8:25				7.1	14.8	7.75	.059	<.015	.40
SB18	Harmisons	01-May-06	8:50				7.3	13.8	6.54	.036	<.015	.44
SB19	Stony Run	01-May-06	9:00				7.1	14.2	7.47	.026	<.015	.36
SB20	Romney Bridge	01-May-06	9:20				7.1	14.9	7.34	.023	<.015	.35
SB21	Hanging Rock	01-May-06	10:10				7.2	14.8	6.67	.036	<.015	.34
SB22	Blues Beach Bridge	01-May-06	10:25				7.2	15.4	7.75	.013	<.015	.32
SB23	Millesons Mill Bridge	01-May-06	10:40	10:30	2.85	1230	7.4	15.2	7.76	.026	<.015	.32
SB24	Blue Ford North	01-May-06	11:10				7.3	15.8	8.07	.026	<.015	.32
SB24Dup	Blue Ford North	01-May-06	11:10				7.3	15.8	8.07	.020	<.015	.32
SB25	Indian Rock	01-May-06	11:20				7.4	16.5	8.4	.020	<.015	.33
SB26	Mouth	01-May-06	11:30				7.5	16.5	8.33	.026	.027	.42
SB2	Cedar Springs	03-May-06	9:55				7.5	11.7		<.009	<.015	.41
SB3	Moyer Gap	03-May-06	10:10				7.6	11.6		.010	<.015	.40
SB4	Rock Quarry	03-May-06	10:15				7.5	11.8		<.009	<.015	.37
SB5	Franklin	03-May-06	10:30	10:30	2.23	155	7.5	12.1		.013	<.015	.26
SB7	Ruddle	03-May-06	10:45				7.4	12.5		<.009	<.015	.26
SB8	Upper Tract	03-May-06	10:55				7.4	12.8		<.009	<.015	.31
SB11	Petersburg	03-May-06	11:30	11:30	4.51	545	7.6	14.7		.013	<.015	.23
SB12	Welton Orch. Park	03-May-06	11:40				7.6	14.8		.010	<.015	.28
SB13	Potomac Valley View	03-May-06	12:05				7.5	15.3		.016	<.015	.28
SB14	Buzzard Ford Bridge	03-May-06	12:15				7.4	15.9		.013	<.015	.28
SB15	Below Moorefield	03-May-06	12:35				7.5	17.1		.248	.018	.71
SB16	Old Fields Bridge	03-May-06	12:45	12:30	8.09		7.6	16.2		.101	<.015	.52
SB17	McNeil	03-May-06	8:00				7.1	15.7		.078	<.015	.41
SB18	Harmisons	03-May-06	8:30				7.3	15.9		.072	<.015	.43
SB19	Stony Run	03-May-06	8:50				7.2	16.2		.068	<.015	.36
SB20	Romney Bridge	03-May-06	9:10				7.3	16.5		.039	<.015	.29
SB21	Hanging Rock	03-May-06	9:25				7.4	16.7		.023	<.015	.26
SB22	Blues Beach Bridge	03-May-06	9:50				7.6	17		.013	<.015	.22
SB23	Millesons Mill Bridge	03-May-06	10:10	10:00	2.63	1040	7.8	17.6		<.009	<.015	.18
SB24	Blue Ford North	03-May-06	10:40				8	18.5		.010	<.015	.17
SB24Dup	Blue Ford North	03-May-06	10:40				8	18.5		.010	<.015	.17
SB25	Indian Rock	03-May-06	10:55				8.1	18.7		.010	<.015	.17
SB26	Mouth	03-May-06	11:10				8.1	18.2		.013	<.015	.16

May 2006 (2)

Site #	Site Description	Date	WVDA Time	USGS Time	USGS Gage Height	USGS Discharge	pH (Meter)	Field Temp (C)	DO	Total P	Ammonia (NH3-N)	Nitrate (NO3-N)
SB2	Cedar Springs	03-May-06	9:55				7.5	11.7		<.009	<.015	.41
SB3	Moyer Gap	03-May-06	10:10				7.6	11.6		.010	<.015	.40
SB4	Rock Quarry	03-May-06	10:15				7.5	11.8		<.009	<.015	.37
SB5	Franklin	03-May-06	10:30	10:30	2.23	155	7.5	12.1		.013	<.015	.26
SB7	Ruddle	03-May-06	10:45				7.4	12.5		<.009	<.015	.26
SB8	Upper Tract	03-May-06	10:55				7.4	12.8		<.009	<.015	.31
SB11	Petersburg	03-May-06	11:30	11:30	4.51	545	7.6	14.7		.013	<.015	.23
SB12	Welton Orch. Park	03-May-06	11:40				7.6	14.8		.010	<.015	.28
SB13	Potomac Valley View	03-May-06	12:05				7.5	15.3		.016	<.015	.28
SB14	Buzzard Ford Bridge	03-May-06	12:15				7.4	15.9		.013	<.015	.28
SB15	Below Moorefield	03-May-06	12:35				7.5	17.1		.248	.018	.71
SB16	Old Fields Bridge	03-May-06	12:45	12:30	8.09		7.6	16.2		.101	<.015	.52
SB17	McNeil	03-May-06	8:00				7.1	15.7		.078	<.015	.41
SB18	Harmisons	03-May-06	8:30				7.3	15.9		.072	<.015	.43
SB19	Stony Run	03-May-06	8:50				7.2	16.2		.068	<.015	.36
SB20	Romney Bridge	03-May-06	9:10				7.3	16.5		.039	<.015	.29
SB21	Hanging Rock	03-May-06	9:25				7.4	16.7		.023	<.015	.26
SB22	Blues Beach Bridge	03-May-06	9:50				7.6	17		.013	<.015	.22
SB23	Millesons Mill Bridge	03-May-06	10:10	10:00	2.63	1040	7.8	17.6		<.009	<.015	.18
SB24	Blue Ford North	03-May-06	10:40				8	18.5		.010	<.015	.17
SB24Dup	Blue Ford North	03-May-06	10:40				8	18.5		.010	<.015	.17
SB25	Indian Rock	03-May-06	10:55				8.1	18.7		.010	<.015	.17
SB26	Mouth	03-May-06	11:10				8.1	18.2		.013	<.015	.16
SB2	Cedar Springs	11-May-06	9:40				7.8	14.6		.013	<.015	.38
SB3	Moyer Gap	11-May-06	9:25				7.7	15.7		<.009	<.015	.34
SB4	Rock Quarry	11-May-06	9:10				7.7	15.6		.026	<.015	.31
SB5	Franklin	11-May-06	8:50	9:00	2.01	101	7.6	16.3		.020	<.015	.23
SB7	Ruddle	11-May-06	8:35				7.7	16.6		<.009	<.015	.17
SB8	Upper Tract	11-May-06	8:15				7.5	16.8		.013	<.015	.28
SB11	Petersburg	11-May-06	7:45	7:30	4.07	347	7.3	17.9		.026	<.015	.22
SB12	Welton Orch. Park	11-May-06	11:10				7.7	18		.010	<.015	.25
SB13	Potomac Valley View	11-May-06	11:25				7.7	18.7		.010	<.015	.25
SB14	Buzzard Ford Bridge	11-May-06	11:40				7.6	19.7		.016	<.015	.26
SB15	Below Moorefield	11-May-06	11:55				8.1	20.3		.287	.026	.59
SB16	Old Fields Bridge	11-May-06	12:10	12:00	7.67		8	19.4		.156	<.015	.46
SB17	McNeil	11-May-06	8:30				6.6	18.9		.117	<.015	.35
SB18	Harmisons	11-May-06	8:55				7.3	18.7		.059	<.015	.23
SB19	Stony Run	11-May-06	9:05				7.6	18.8		.055	<.015	.18
SB20	Romney Bridge	11-May-06	9:27				8	18.4		.029	<.015	.11
SB21	Hanging Rock	11-May-06	10:15				8.2	18.6		.042	<.015	.09
SB22	Blues Beach Bridge	11-May-06	10:25				8	18		.049	<.015	.07
SB23	Millesons Mill Bridge	11-May-06	10:40	10:30	2.2	620	8.2	18.1		.023	<.015	.07
SB24	Blue Ford North	11-May-06	11:10				8.1	18.3		.026	<.015	.07
SB24Dup	Blue Ford North	11-May-06	11:10				8.1	18.3		.026	<.015	.07
SB25	Indian Rock	11-May-06	11:20				8	18.4		.029	<.015	.06
SB26	Mouth	11-May-06	11:35				8	18.4		<.009	<.015	.04

May 2006 (3)

Site #	Site Description	Date	WVDA Time	USGS Time	USGS Gage Height	USGS Discharge	pH (Meter)	Field Temp (C)	DO	Total P	Ammonia (NH3-N)	Nitrate (NO3-N)
SB2	Cedar Springs	11-May-06	9:40				7.8	14.6		.013	<.015	.38
SB3	Moyer Gap	11-May-06	9:25				7.7	15.7		<.009	<.015	.34
SB4	Rock Quarry	11-May-06	9:10				7.7	15.6		.026	<.015	.31
SB5	Franklin	11-May-06	8:50	9:00	2.01	101	7.6	16.3		.020	<.015	.23
SB7	Ruddle	11-May-06	8:35				7.7	16.6		<.009	<.015	.17
SB8	Upper Tract	11-May-06	8:15				7.5	16.8		.013	<.015	.28
SB11	Petersburg	11-May-06	7:45	7:30	4.07	347	7.3	17.9		.026	<.015	.22
SB12	Welton Park	11-May-06	11:10				7.7	18		.010	<.015	.25
SB13	Potomac Valley View	11-May-06	11:25				7.7	18.7		.010	<.015	.25
SB14	Buzzard Ford Bridge	11-May-06	11:40				7.6	19.7		.016	<.015	.26
SB15	Below Moorefield	11-May-06	11:55				8.1	20.3		.287	.026	.59
SB16	Old Fields Bridge	11-May-06	12:10	12:00	7.67		8	19.4		.156	<.015	.46
SB17	McNeil	11-May-06	8:30				6.6	18.9		.117	<.015	.35
SB18	Harmisons	11-May-06	8:55				7.3	18.7		.059	<.015	.23
SB19	Stony Run	11-May-06	9:05				7.6	18.8		.055	<.015	.18
SB20	Romney Bridge	11-May-06	9:27				8	18.4		.029	<.015	.11
SB21	Hanging Rock	11-May-06	10:15				8.2	18.6		.042	<.015	.09
SB22	Blues Beach Bridge	11-May-06	10:25				8	18		.049	<.015	.07
SB23	Millesons Mill Bridge	11-May-06	10:40	10:30	2.2	620	8.2	18.1		.023	<.015	.07
SB24	Blue Ford North	11-May-06	11:10				8.1	18.3		.026	<.015	.07
SB24Dup	Blue Ford North	11-May-06	11:10				8.1	18.3		.026	<.015	.07
SB25	Indian Rock	11-May-06	11:20				8	18.4		.029	<.015	.06
SB26	Mouth	11-May-06	11:35				8	18.4		<.009	<.015	.04
SB2	Cedar Springs	22-May-06	9:10				7.1	11.9		<.009	.015	.28
SB3	Moyer Gap	22-May-06	9:20				7.3	11.1		.016	<.015	.30
SB4	Rock Quarry	22-May-06	9:30				7.3	11.7		.016	<.015	.30
SB5	Franklin	22-May-06	9:40	9:30	1.98	95	7.4	12.1		.010	.027	.25
SB7	Ruddle	22-May-06	9:55				8.1	13.5		.010	<.015	.18
SB8	Upper Tract	22-May-06	10:10				7.7	13.2		<.009	<.015	.24
SB11	Petersburg	22-May-06	10:40	10:30	4.35	467	7.6	14.9		.013	.017	.27
SB12	Welton Park	22-May-06	10:50				7.8	14.6		<.009	<.015	.31
SB13	Potomac Valley View	22-May-06	11:05				7.5	14.9		.010	<.015	.31
SB14	Buzzard Ford Bridge	22-May-06	11:20				7.7	15.8		.013	<.015	.31
SB15	Below Moorefield	22-May-06	11:30				7.9	16.4		.225	.029	.37
SB16	Old Fields Bridge	22-May-06	11:40	11:30	7.9		8.1	15.8		.101	<.015	.33
SB17	McNeil	22-May-06	8:30				7	13.4		.062	.016	.29
SB18	Harmisons	22-May-06	9:05				7.2	13.8		<.009	<.015	.40
SB19	Stony Run	22-May-06	9:20				7.2	14.1		.020	.022	.28
SB20	Romney Bridge	22-May-06	9:50				7.4	14.8		.013	.024	.21
SB21	Hanging Rock	22-May-06	10:10				7.7	14.1		.023	<.015	.19
SB22	Blues Beach Bridge	22-May-06	10:25				7.4	14.3		.019	.017	.17
SB23	Millesons Mill Bridge	22-May-06	10:40	10:30	2.47	875	7.9	15.3		.020	<.015	.16
SB24	Blue Ford North	22-May-06	11:15				7.8	15.8		.016	.020	.16
SB24Dup	Blue Ford North	22-May-06	11:15				7.8	15.8		.026	.056	.16
SB25	Indian Rock	22-May-06	11:30				8.1	15.9		.029	.037	.15
SB26	Mouth	22-May-06	11:45				8	16.2		.026	<.015	.14

May 2006 (4)

Site #	Site Description	Date	WVDA Time	USGS Time	USGS Gage Height	USGS Discharge	pH (Meter)	Field Temp (C)	DO	Total P	Ammonia (NH3-N)	Nitrate (NO3-N)
SB2	Cedar Springs	22-May-06	9:10				7.1	11.9		<.009	.015	.28
SB3	Moyer Gap	22-May-06	9:20				7.3	11.1		.016	<.015	.30
SB4	Rock Quarry	22-May-06	9:30				7.3	11.7		.016	<.015	.30
SB5	Franklin	22-May-06	9:40	9:30	1.98	95	7.4	12.1		.010	.027	.25
SB7	Ruddle	22-May-06	9:55				8.1	13.5		.010	<.015	.18
SB8	Upper Tract	22-May-06	10:10				7.7	13.2		<.009	<.015	.24
SB11	Petersburg	22-May-06	10:40	10:30	4.35	467	7.6	14.9		.013	.017	.27
SB12	Welton Park	22-May-06	10:50				7.8	14.6		<.009	<.015	.31
SB13	Potomac Valley View	22-May-06	11:05				7.5	14.9		.010	<.015	.31
SB14	Buzzard Ford Bridge	22-May-06	11:20				7.7	15.8		.013	<.015	.31
SB15	Below Moorefield	22-May-06	11:30				7.9	16.4		.225	.029	.37
SB16	Old Fields Bridge	22-May-06	11:40	11:30	7.9		8.1	15.8		.101	<.015	.33
SB17	McNeil	22-May-06	8:30				7	13.4		.062	.016	.29
SB18	Harmisons	22-May-06	9:05				7.2	13.8		<.009	<.015	.40
SB19	Stony Run	22-May-06	9:20				7.2	14.1		.020	.022	.28
SB20	Romney Bridge	22-May-06	9:50				7.4	14.8		.013	.024	.21
SB21	Hanging Rock	22-May-06	10:10				7.7	14.1		.023	<.015	.19
SB22	Blues Beach Bridge	22-May-06	10:25				7.4	14.3		.019	.017	.17
SB23	Millesons Mill Bridge	22-May-06	10:40	10:30	2.47	875	7.9	15.3		.020	<.015	.16
SB24	Blue Ford North	22-May-06	11:15				7.8	15.8		.016	.020	.16
SB24Dup	Blue Ford North	22-May-06	11:15				7.8	15.8		.026	.056	.16
SB25	Indian Rock	22-May-06	11:30				8.1	15.9		.029	.037	.15
SB26	Mouth	22-May-06	11:45				8	16.2		.026	<.015	.14
SB2	Cedar Springs	25-May-06	12:35				8.1	15.8		.020	.019	.23
SB3	Moyer Gap	25-May-06	12:20				7.9	15.8		.010	<.015	.27
SB4	Rock Quarry	25-May-06	12:05				7.7	16		.013	.020	.27
SB5	Franklin	25-May-06	11:50	12:00	1.89	78	7.5	16.3		.010	<.015	.22
SB7	Ruddle	25-May-06	11:30				7.8	17		.013	<.015	.18
SB8	Upper Tract	25-May-06	11:10				7.4	15.7		<.009	.022	.21
SB11	Petersburg	25-May-06	10:00	10:00	4.05	339	7	15.5		.010	<.015	.23
SB12	Welton Park	25-May-06	9:40				6.9	15.6		.020	<.015	.27
SB13	Potomac Valley View	25-May-06	9:15				6.9	16.8		<.009	.019	.26
SB14	Buzzard Ford Bridge	25-May-06	8:50				6.8	16.9		<.009	.023	.27
SB15	Below Moorefield	25-May-06	8:30				6.8	16.7		.303	.081	.45
SB16	Old Fields Bridge	25-May-06	8:05	8:00	7.61		6.6	16.8		.156	.047	.40
SB17	McNeil	25-May-06	9:00				6.7	17.1		.134	<.015	.26
SB18	Harmisons	25-May-06	9:25				6.8	17.3		.088	<.015	.21
SB19	Stony Run	25-May-06	9:35				7	17.5		.098	.018	.15
SB20	Romney Bridge	25-May-06	9:55				6.9	17.2		.065	.027	.10
SB21	Hanging Rock	25-May-06	10:20				7	17.3		.052	.029	.08
SB22	Blues Beach Bridge	25-May-06	10:35				7	17.4		.046	.023	.05
SB23	Millesons Mill Bridge	25-May-06	10:55	11:00	2.19	611	7.1	17.7		.033	.057	.03
SB24	Blue Ford North	25-May-06	11:20				7	17.8		.023	.028	.02
SB24Dup	Blue Ford North	25-May-06	11:20				7	17.8		.026	.030	.02
SB25	Indian Rock	25-May-06	11:30				7.3	18		.013	.027	.02
SB26	Mouth	25-May-06	12:10				7.3	17.9		.016	.022	.01

Contact Information

Laurie Olah
West Virginia Department of Agriculture

www.wvagriculture.org

Phone: 304-538-2397

Fax: 304-538-7088

E-mail: lolah@ag.state.wv.us