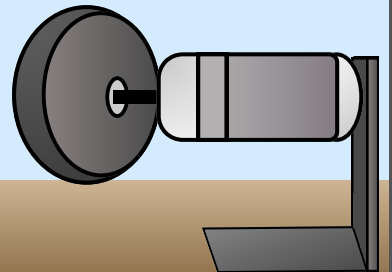
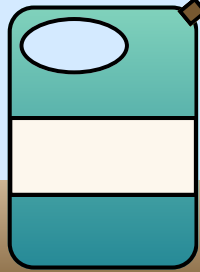


Best Management Practices for Metal Fabrication Shops

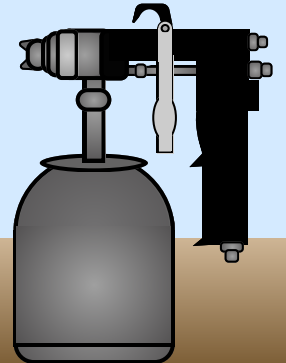
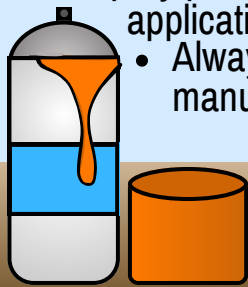
Dry Abrasive Blasting and Dry Grinding and Polish

- Implement management practices that minimize dust in the surrounding area and dust generated to reduce metal fabrication hazardous air pollutants (MFHAP) emissions.
- Capture emissions and vent them to a filtration control device, such as a baghouse or a filter vent.
- Whenever possible, switch from a high particulate matter emitting blast media to a low particulate matter emitting blast media, for example, changing from Black Beauty to garnet, etc.
- Do not reuse blast media unless free of contaminants (ex. removal by filtration).
- Enclose abrasive materials in storage areas and holding bins.
- Always operate all equipment associated with dry abrasive blasting and dry grinding and polishing in accordance with the manufacturer's instructions.



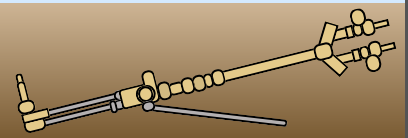
Spray Painting

- Perform regular inspections and replacements of all spray booth and spray room filter media.
- All painting areas must utilize negative air pressure ventilation so that contaminated air only exits through the filters.
- Cleaning of spray guns must be done with a non-HAP containing cleaning solvent, or in a way that avoids a build up of cleaning solvent and paint residue outside of the container collecting residual solvent.
- All spray painting must be done with a high-volume, low-pressure (HVLP) spray gun, electrostatic application, airless spray gun, or an equivalent technology.
- Always operate all equipment associated with spray painting in accordance with the manufacturer's instructions.



Welding

- Implement physical measures and utilize welding practices that reduce fume generation capabilities and rates while maintaining the quality of the welding.
- Perform visual determinations and keep records of welding fugitive emissions at the primary vent, stack, opening, or exit point from the building containing the welding operation.
 - Report all instances of fugitive emissions detected along with any corrections made to reduce them.
 - Use a welding fume capture and control system.
 - Always operate all equipment associated with welding in accordance with the manufacturer's instructions.



If your facility falls under any of the following NAICS codes, you are subject to Subpart XXXXXX of 40 CFR Part 63

NAICS Code	NAICS Description	NAICS Code	NAICS Description
332420	Metal Tank (Heavy Gauge) Manufacturing	332410	Power Boiler and Heat Exchanger Manufacturing
332618	Other Fabricated Wire Product Manufacturing	332312	Fabricated Structural Metal Manufacturing
332919	Other Metal Valve and Pipe Fitting Manufacturing	332117	Powder Metallurgy Part Manufacturing
332999	All Other Miscellaneous Fabricated Metal Product Manufacturing	332111	Iron and Steel Forging
333911	Pump and Pumping Equipment Manufacturing	332313	Plate Work Manufacturing
333132	Oil and Gas Field Machinery and Equipment Manufacturing	335312	Motor and Generator Manufacturing
333414	Heating Equipment (except Warm Air Furnaces) Manufacturing	333120	Construction Machinery Manufacturing
335999	All Other Misc. Electrical Equipment & Component Manufacturing		



For more information, contact the West Virginia Department of Environmental Protection's Small Business Assistance Program at (304) 926-0475, or scan the following QR code:



This poster is intended for informational purposes only and is not intended to substitute for the actual rules.