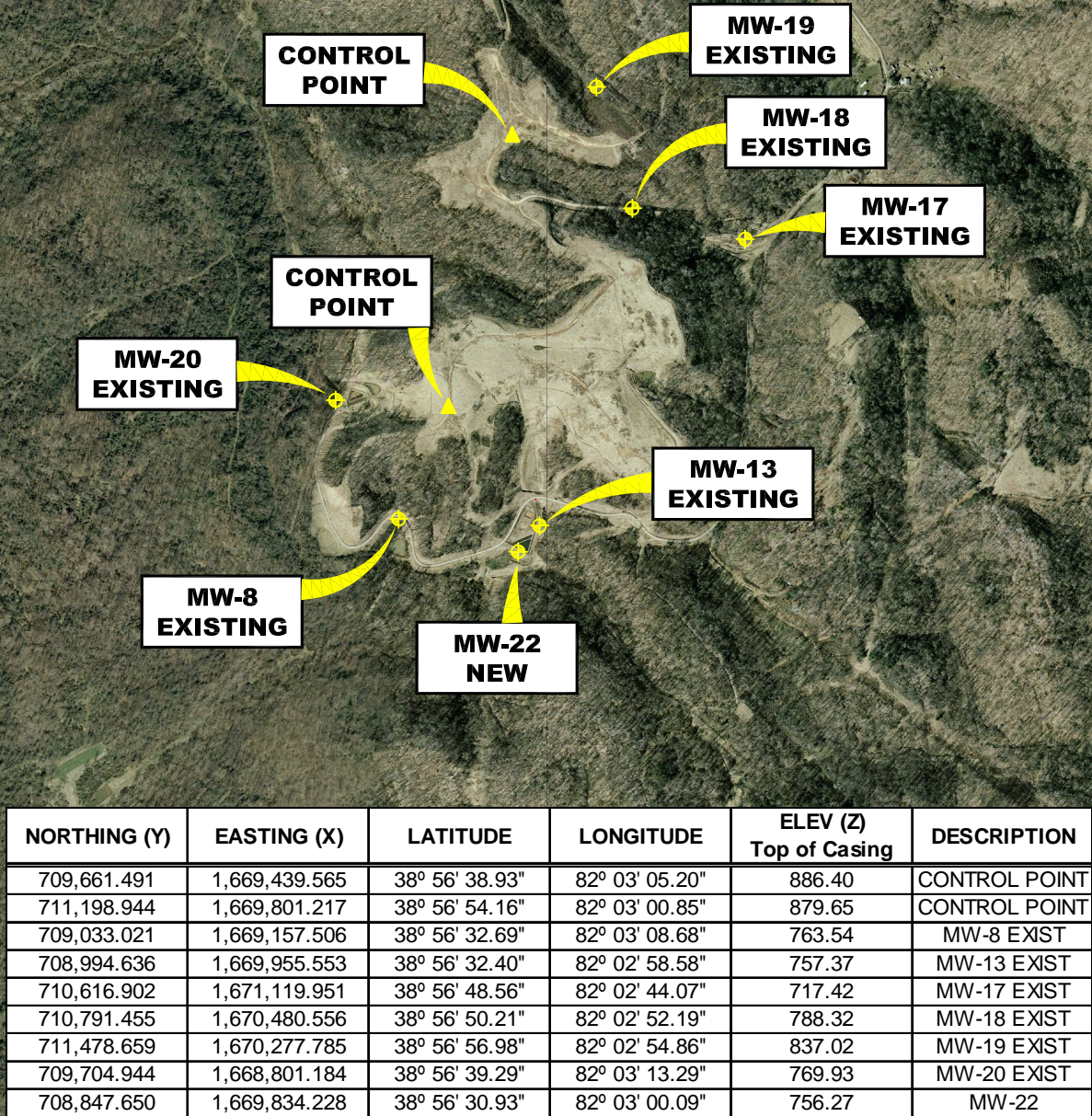


ERO LANDFILL



NORTHING (Y)	EASTING (X)	LATITUDE	LONGITUDE	ELEV (Z) Top of Casing	DESCRIPTION
709,661.491	1,669,439.565	38° 56' 38.93"	82° 03' 05.20"	886.40	CONTROL POINT
711,198.944	1,669,801.217	38° 56' 54.16"	82° 03' 00.85"	879.65	CONTROL POINT
709,033.021	1,669,157.506	38° 56' 32.69"	82° 03' 08.68"	763.54	MW-8 EXIST
708,994.636	1,669,955.553	38° 56' 32.40"	82° 02' 58.58"	757.37	MW-13 EXIST
710,616.902	1,671,119.951	38° 56' 48.56"	82° 02' 44.07"	717.42	MW-17 EXIST
710,791.455	1,670,480.556	38° 56' 50.21"	82° 02' 52.19"	788.32	MW-18 EXIST
711,478.659	1,670,277.785	38° 56' 56.98"	82° 02' 54.86"	837.02	MW-19 EXIST
709,704.944	1,668,801.184	38° 56' 39.29"	82° 03' 13.29"	769.93	MW-20 EXIST
708,847.650	1,669,834.228	38° 56' 30.93"	82° 03' 00.09"	756.27	MW-22

AERIAL MAP MONITORING WELL LOCATIONS

WEST COLUMBIA, MASON COUNTY, WEST VIRGINIA

0' 1,000' 2,000' 3,000'



SCALE: 1 INCH = 1,000 FEET



Stantec Consulting Services Inc.

1 Moore Avenue
Buckhannon WV 26201
Tel. 304.472.7140
Fax. 304.472.6239
www.stantec.com

PROJECT NO. 173611045

SURVEYED BY: WAG

DRAWN BY: JHL

CHECKED BY: DEM

APPROVED BY: JHL

DATE: OCTOBER 5, 2009

NOTE:

HORIZONTAL DATUM :
WEST VIRGINIA STATE PLANE COORDINATES
NAD 83 SOUTH ZONE (CORS 96).

VERTICAL DATUM : NAVD 88 GEOID 03 (CONUS)

COORDINATE UNITS : US SURVEY FOOT
DISTANCE UNITS : US SURVEY FOOT
HEIGHT UNITS : US SURVEY FOOT

SHT. NO.

2

TOTAL

2