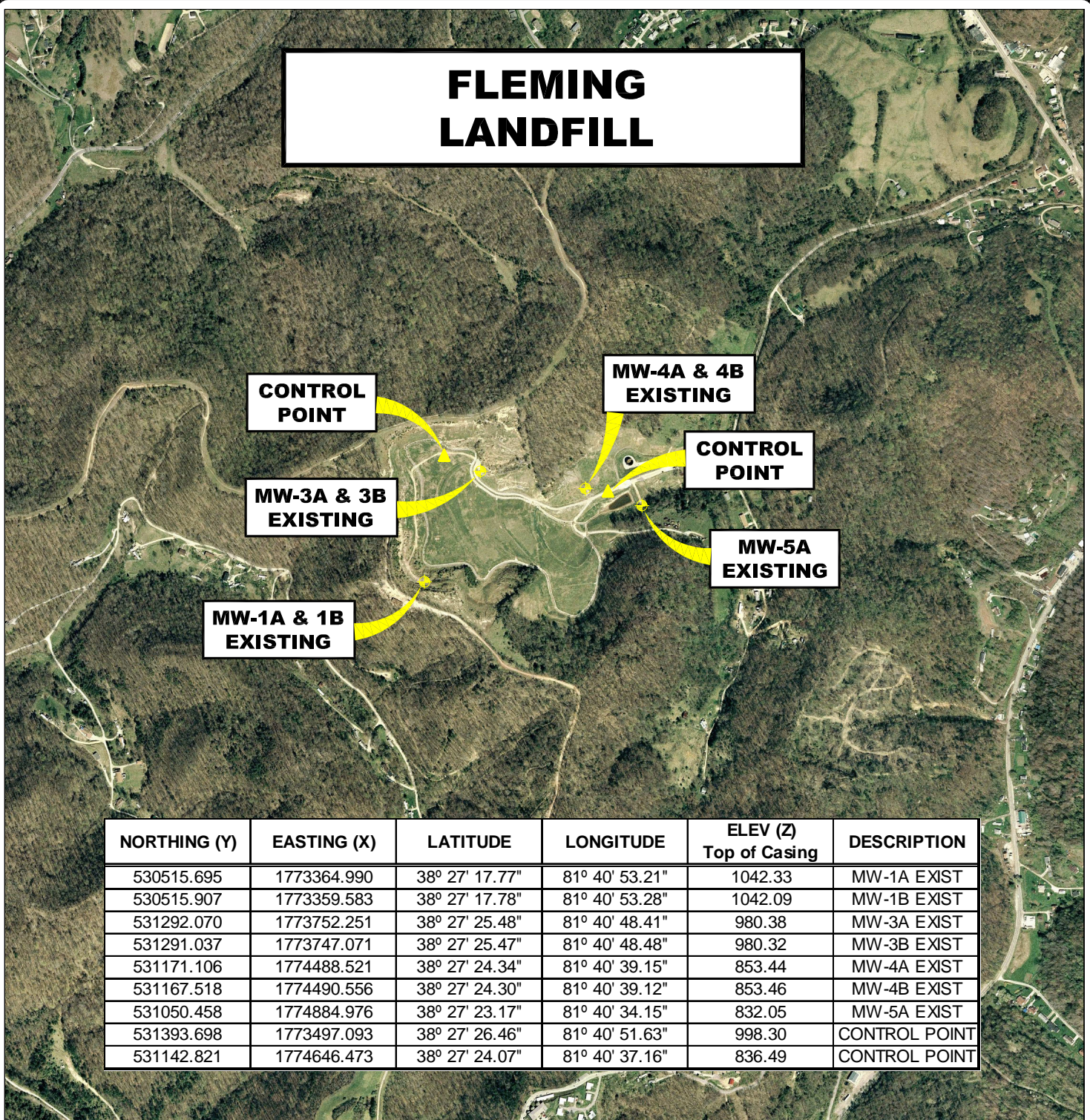


FLEMING LANDFILL



NORTHING (Y)	EASTING (X)	LATITUDE	LONGITUDE	ELEV (Z) Top of Casing	DESCRIPTION
530515.695	1773364.990	38° 27' 17.77"	81° 40' 53.21"	1042.33	MW-1A EXIST
530515.907	1773359.583	38° 27' 17.78"	81° 40' 53.28"	1042.09	MW-1B EXIST
531292.070	1773752.251	38° 27' 25.48"	81° 40' 48.41"	980.38	MW-3A EXIST
531291.037	1773747.071	38° 27' 25.47"	81° 40' 48.48"	980.32	MW-3B EXIST
531171.106	1774488.521	38° 27' 24.34"	81° 40' 39.15"	853.44	MW-4A EXIST
531167.518	1774490.556	38° 27' 24.30"	81° 40' 39.12"	853.46	MW-4B EXIST
531050.458	1774884.976	38° 27' 23.17"	81° 40' 34.15"	832.05	MW-5A EXIST
531393.698	1773497.093	38° 27' 26.46"	81° 40' 51.63"	998.30	CONTROL POINT
531142.821	1774646.473	38° 27' 24.07"	81° 40' 37.16"	836.49	CONTROL POINT

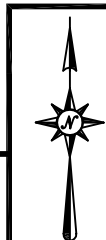
AERIAL MAP MONITORING WELL LOCATIONS

POCATALICO, KANAWHA COUNTY, WEST VIRGINIA

0' 1,000' 2,000' 3,000'



SCALE: 1 INCH = 1,000 FEET



Stantec Consulting Services Inc.

1 Moore Avenue
Buckhannon WV 26201
Tel. 304.472.7140
Fax. 304.472.6239
www.stantec.com

PROJECT NO. 173611045
SURVEYED BY: WAG
DRAWN BY: JHL
CHECKED BY: DEM
APPROVED BY: JHL
DATE: SEPTEMBER 25, 2009

NOTE:
HORIZONTAL DATUM :
WEST VIRGINIA STATE PLANE COORDINATES
NAD 83 SOUTH ZONE (CORS 96).

VERTICAL DATUM : NAVD 88 GEOID 03 (CONUS)

COORDINATE UNITS : US SURVEY FOOT
DISTANCE UNITS : US SURVEY FOOT
HEIGHT UNITS : US SURVEY FOOT

SHT. NO.
2
TOTAL
2