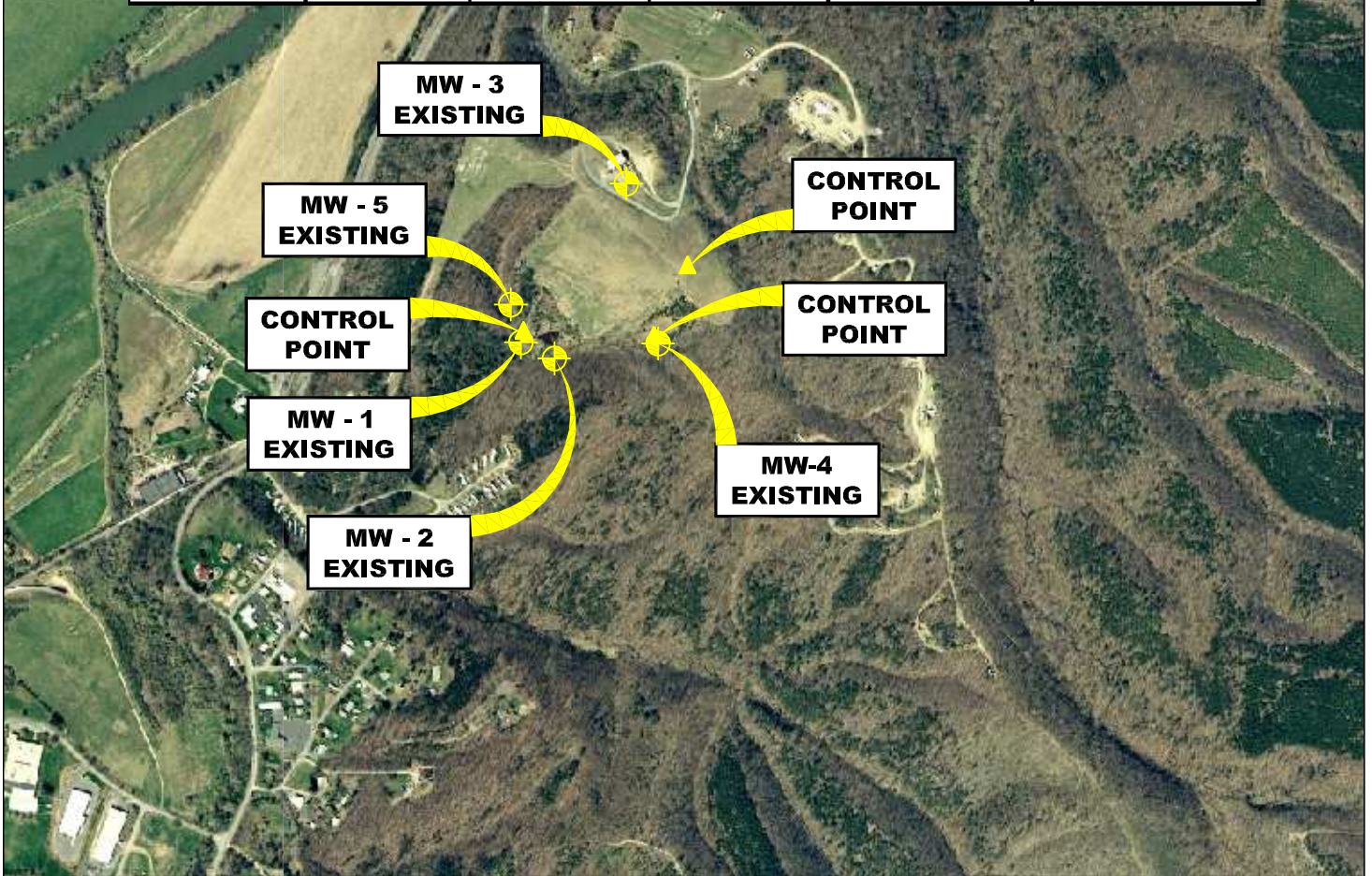


# HAMPSHIRE COUNTY LANDFILL

NORTHING (Y)	EASTING (X)	LATITUDE	LONGITUDE	ELEV (Z) Top of Casing	DESCRIPTION
314,986.31	2,182,246.02	39° 21' 44.42"	78° 44' 38.42"	879.053	CONTROL POINT
314,615.71	2,181,341.59	39° 21' 40.83"	78° 44' 49.97"	761.723	CONTROL POINT
314,595.65	2,182,059.28	39° 21' 40.57"	78° 44' 40.84"	829.662	CONTROL POINT
314,571.68	2,181,319.53	39° 21' 40.39"	78° 44' 50.25"	763.92	MW 1
314,481.42	2,181,503.38	39° 21' 39.48"	78° 44' 47.92"	765.03	MW 2
315,455.53	2,181,906.18	39° 21' 49.08"	78° 44' 42.69"	847.88	MW-3
314,566.10	2,182,081.15	39° 21' 40.27"	78° 44' 40.56"	834.22	MW-4
314,783.76	2,181,262.39	39° 21' 42.49"	78° 44' 50.96"	769.42	MW-5



## AERIAL MAP MONITORING WELL LOCATIONS

ROMNEY, HAMPSHIRE COUNTY, WEST VIRGINIA

0' 1,000' 2,000' 3,000'



SCALE: 1 INCH = 1,000 FEET



**Stantec Consulting Services Inc.**

1 Moore Avenue  
Buckhannon WV 26201  
Tel. 304.472.7140  
Fax. 304.472.6239  
www.stantec.com

PROJECT NO. 173611044

SURVEYED BY: JB

DRAWN BY: JMS

CHECKED BY: DEM

APPROVED BY: JHL

DATE: APRIL 2010

NOTE:

HORIZONTAL DATUM:  
WEST VIRGINIA STATE PLANE COORDINATES  
NAD 83 NORTH ZONE (CORS 96).

VERTICAL DATUM : NAVD 88 GEOID 09 (CONUS)

COORDINATE UNITS : US SURVEY FOOT  
DISTANCE UNITS : US SURVEY FOOT  
HEIGHT UNITS : US SURVEY FOOT

SHT. NO.

2

TOTAL

2