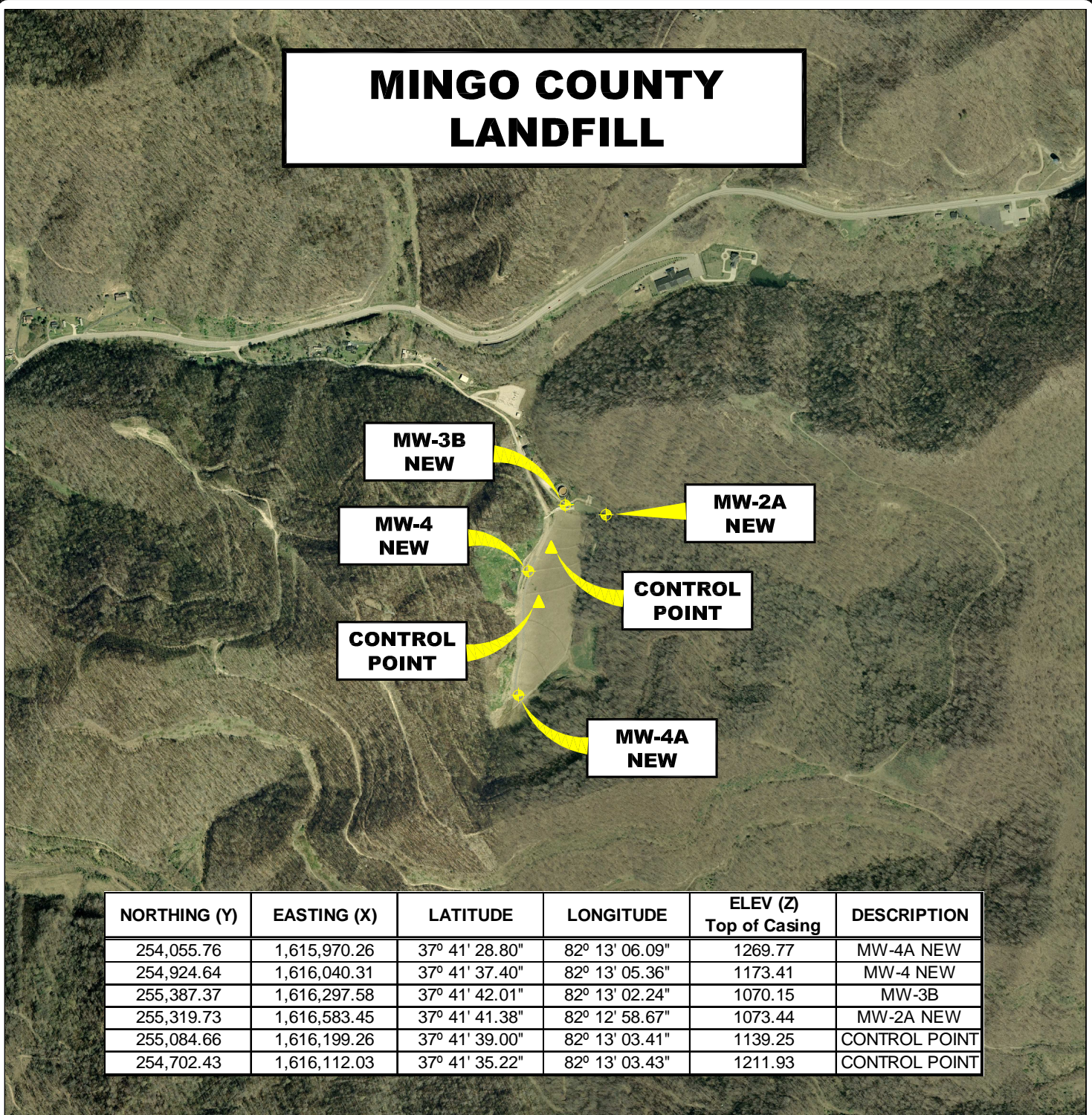


# MINGO COUNTY LANDFILL



| NORTHING (Y) | EASTING (X)  | LATITUDE       | LONGITUDE      | ELEV (Z)<br>Top of Casing | DESCRIPTION   |
|--------------|--------------|----------------|----------------|---------------------------|---------------|
| 254,055.76   | 1,615,970.26 | 37° 41' 28.80" | 82° 13' 06.09" | 1269.77                   | MW-4A NEW     |
| 254,924.64   | 1,616,040.31 | 37° 41' 37.40" | 82° 13' 05.36" | 1173.41                   | MW-4 NEW      |
| 255,387.37   | 1,616,297.58 | 37° 41' 42.01" | 82° 13' 02.24" | 1070.15                   | MW-3B         |
| 255,319.73   | 1,616,583.45 | 37° 41' 41.38" | 82° 12' 58.67" | 1073.44                   | MW-2A NEW     |
| 255,084.66   | 1,616,199.26 | 37° 41' 39.00" | 82° 13' 03.41" | 1139.25                   | CONTROL POINT |
| 254,702.43   | 1,616,112.03 | 37° 41' 35.22" | 82° 13' 03.43" | 1211.93                   | CONTROL POINT |

## AERIAL MAP MONITORING WELL LOCATIONS

DELBARTON, MINGO COUNTY, WEST VIRGINIA

0'                      1,000'                      2,000'                      3,000'



SCALE: 1 INCH = 1,000 FEET



**Stantec Consulting Services Inc.**

1 Moore Avenue  
Buckhannon WV 26201  
Tel. 304.472.7140  
Fax. 304.472.6239  
www.stantec.com

|              |                    |
|--------------|--------------------|
| PROJECT NO.  | 173611045          |
| SURVEYED BY: | WAG                |
| DRAWN BY:    | JHL                |
| CHECKED BY:  | DEM                |
| APPROVED BY: | JHL                |
| DATE:        | SEPTEMBER 28, 2009 |

**NOTE:**  
HORIZONTAL DATUM :  
WEST VIRGINIA STATE PLANE COORDINATES  
NAD 83 SOUTH ZONE (CORS 96).  
  
VERTICAL DATUM : NAVD 88 GEOID 03 (CONUS)  
  
COORDINATE UNITS : US SURVEY FOOT  
DISTANCE UNITS : US SURVEY FOOT  
HEIGHT UNITS : US SURVEY FOOT

|          |   |
|----------|---|
| SHT. NO. | 2 |
| TOTAL    | 2 |