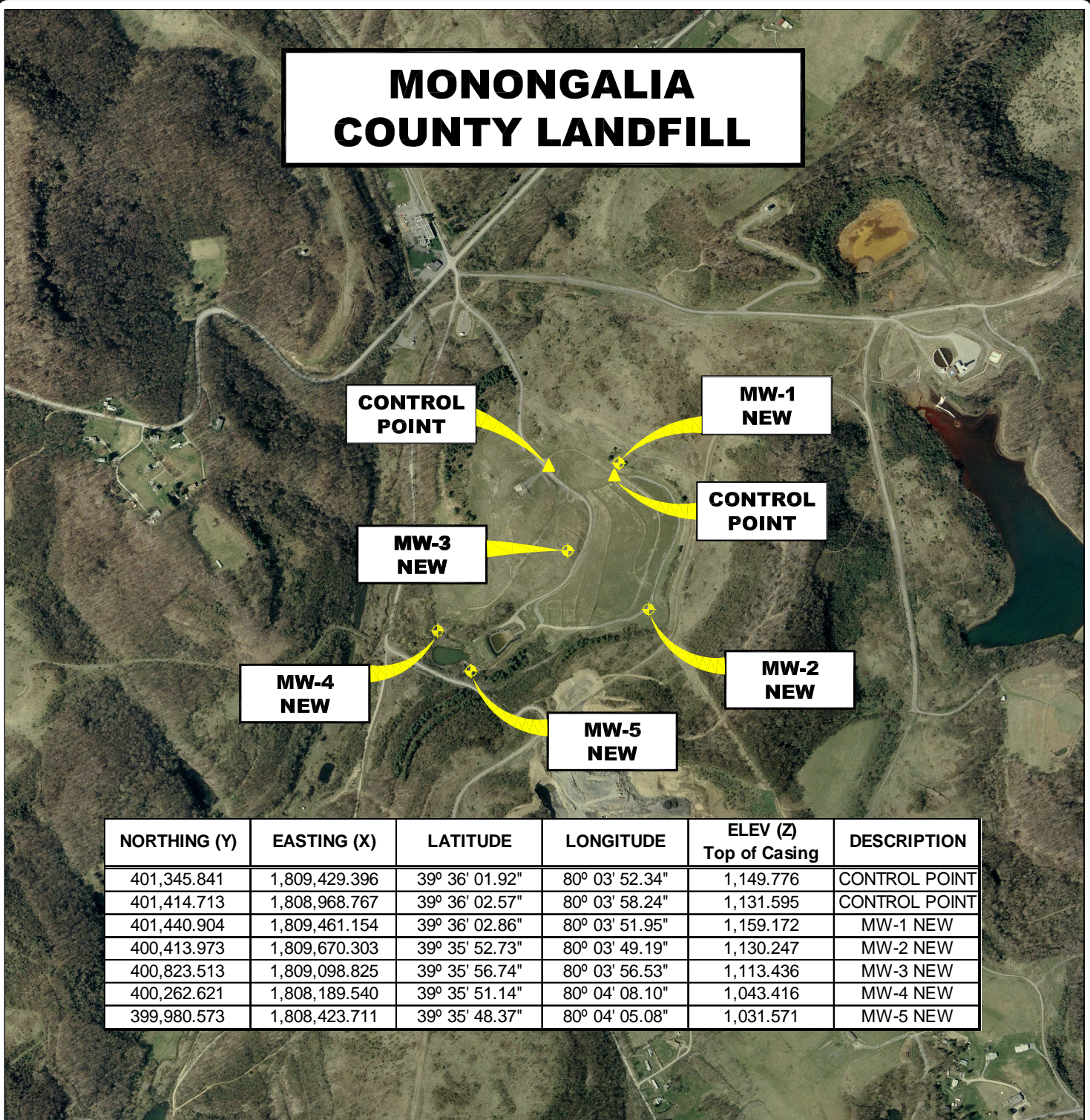


MONONGALIA COUNTY LANDFILL



| NORTHING (Y) | EASTING (X) | LATITUDE | LONGITUDE | ELEV (Z) Top of Casing | DESCRIPTION |
|--------------|---------------|----------------|----------------|---------------------------|---------------|
| 401,345.841 | 1,809,429.396 | 39° 36' 01.92" | 80° 03' 52.34" | 1,149.776 | CONTROL POINT |
| 401,414.713 | 1,808,968.767 | 39° 36' 02.57" | 80° 03' 58.24" | 1,131.595 | CONTROL POINT |
| 401,440.904 | 1,809,461.154 | 39° 36' 02.86" | 80° 03' 51.95" | 1,159.172 | MW-1 NEW |
| 400,413.973 | 1,809,670.303 | 39° 35' 52.73" | 80° 03' 49.19" | 1,130.247 | MW-2 NEW |
| 400,823.513 | 1,809,098.825 | 39° 35' 56.74" | 80° 03' 56.53" | 1,113.436 | MW-3 NEW |
| 400,262.621 | 1,808,189.540 | 39° 35' 51.14" | 80° 04' 08.10" | 1,043.416 | MW-4 NEW |
| 399,980.573 | 1,808,423.711 | 39° 35' 48.37" | 80° 04' 05.08" | 1,031.571 | MW-5 NEW |

AERIAL MAP MONITORING WELL LOCATIONS

WESTOVER, MONONGALIA COUNTY, WEST VIRGINIA

0' 1,000' 2,000' 3,000'



SCALE: 1 INCH = 1,000 FEET



Stantec Consulting Services Inc.

1 Moore Avenue
Buckhannon WV 26201
Tel. 304.472.7140
Fax. 304.472.6239
www.stantec.com

PROJECT NO. 173611045

SURVEYED BY: WAG

DRAWN BY: WAG

CHECKED BY: DEM

APPROVED BY: JHL

DATE: OCTOBER 26, 2009

NOTE:

HORIZONTAL DATUM :
WEST VIRGINIA STATE PLANE COORDINATES
NAD 83 NORTH ZONE (CORS 96).

VERTICAL DATUM : NAVD 88 GEOID 03 (CONUS)

COORDINATE UNITS : US SURVEY FOOT
DISTANCE UNITS : US SURVEY FOOT
HEIGHT UNITS : US SURVEY FOOT

SHT. NO.
2
TOTAL
2