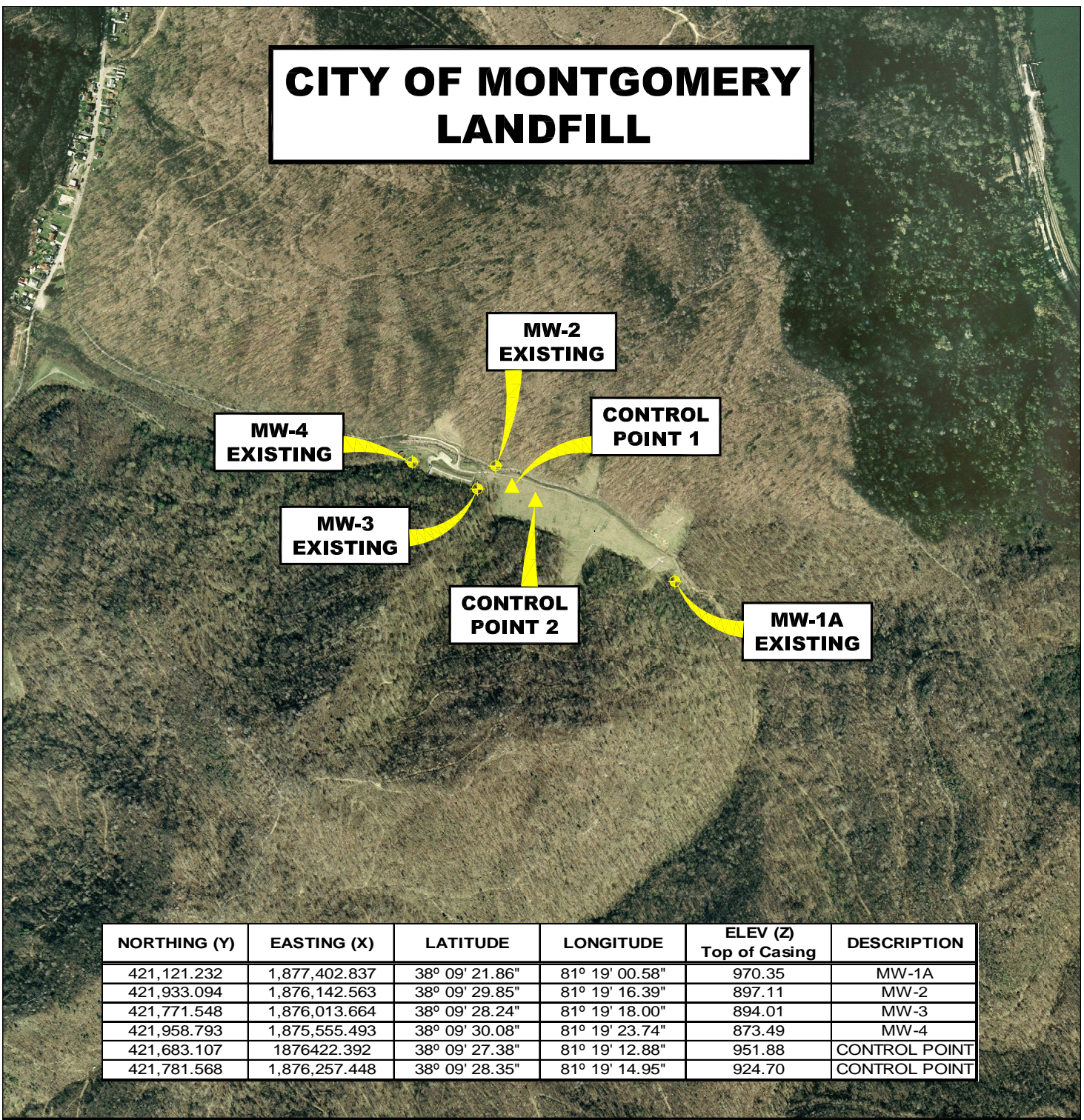


# CITY OF MONTGOMERY LANDFILL



NORTHING (Y)	EASTING (X)	LATITUDE	LONGITUDE	ELEV (Z) Top of Casing	DESCRIPTION
421,121.232	1,877,402.837	38° 09' 21.86"	81° 19' 00.58"	970.35	MW-1A
421,933.094	1,876,142.563	38° 09' 29.85"	81° 19' 16.39"	897.11	MW-2
421,771.548	1,876,013.664	38° 09' 28.24"	81° 19' 18.00"	894.01	MW-3
421,958.793	1,875,555.493	38° 09' 30.08"	81° 19' 23.74"	873.49	MW-4
421,683.107	1876422.392	38° 09' 27.38"	81° 19' 12.88"	951.88	CONTROL POINT
421,781.568	1,876,257.448	38° 09' 28.35"	81° 19' 14.95"	924.70	CONTROL POINT

## AERIAL MAP MONITORING WELL LOCATIONS

MONTGOMERY, FAYETTE COUNTY, WEST VIRGINIA

0'                      1,000'                      2,000'                      3,000'



SCALE: 1 INCH = 1,000 FEET



**Stantec Consulting Services Inc.**

1 Moore Avenue  
Buckhannon WV 26201  
Tel. 304.472.7140  
Fax. 304.472.6239  
www.stantec.com

PROJECT NO. 173611045

SURVEYED BY: WAG

DRAWN BY: JHL

CHECKED BY: DEM

APPROVED BY: JHL

DATE: MARCH 11, 2010

NOTE:

HORIZONTAL DATUM :  
WEST VIRGINIA STATE PLANE GRID COORDINATES  
NAD 83 SOUTH ZONE (CORS 96).

VERTICAL DATUM : NAVD 88 GEOID 09 (CONUS)

COORDINATE UNITS : US SURVEY FOOT  
DISTANCE UNITS : US SURVEY FOOT  
HEIGHT UNITS : US SURVEY FOOT

SHT. NO.

2

TOTAL

2