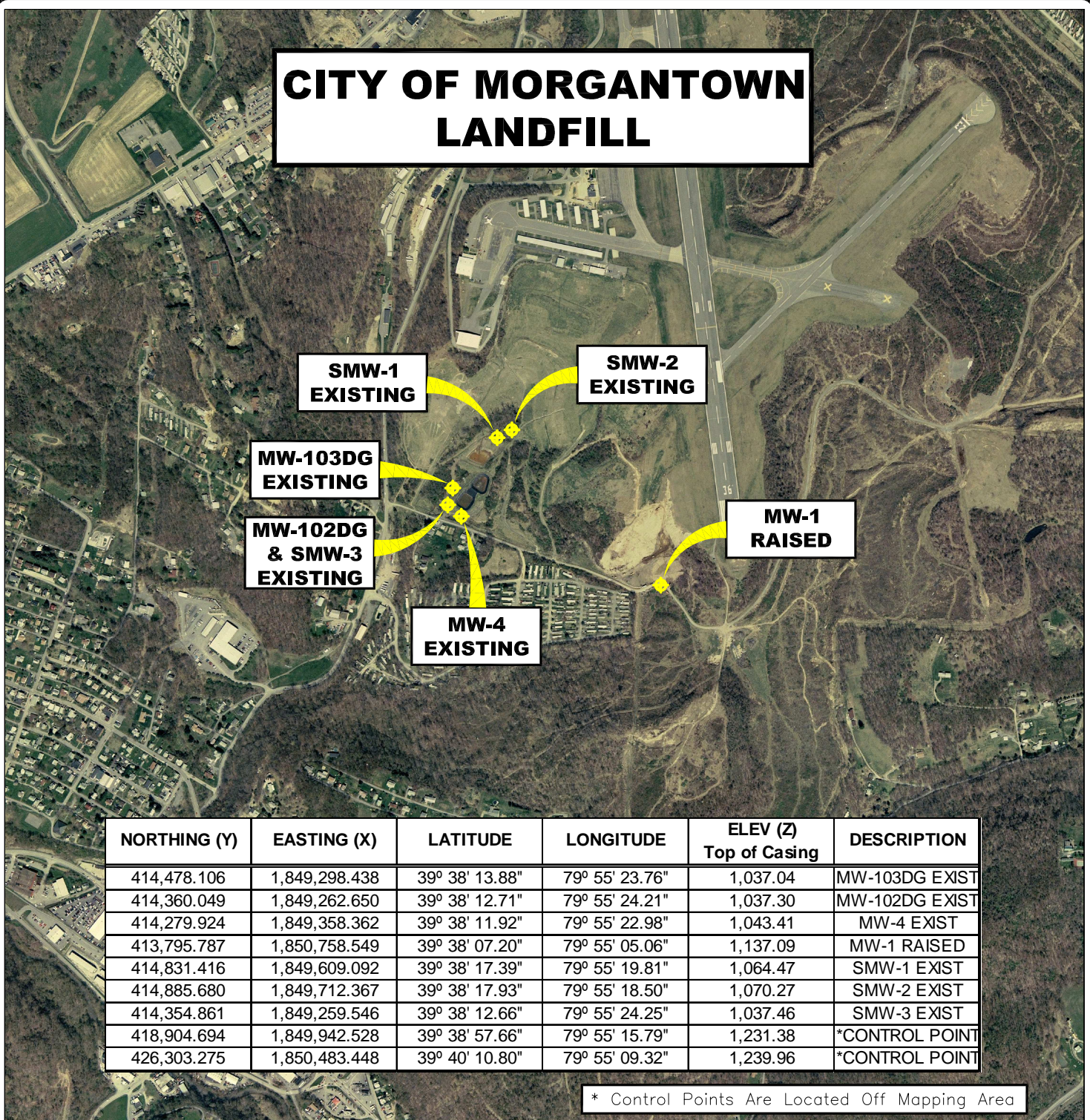


CITY OF MORGANTOWN LANDFILL



NORTHING (Y)	EASTING (X)	LATITUDE	LONGITUDE	ELEV (Z) Top of Casing	DESCRIPTION
414,478.106	1,849,298.438	39° 38' 13.88"	79° 55' 23.76"	1,037.04	MW-103DG EXIST
414,360.049	1,849,262.650	39° 38' 12.71"	79° 55' 24.21"	1,037.30	MW-102DG EXIST
414,279.924	1,849,358.362	39° 38' 11.92"	79° 55' 22.98"	1,043.41	MW-4 EXIST
413,795.787	1,850,758.549	39° 38' 07.20"	79° 55' 05.06"	1,137.09	MW-1 RAISED
414,831.416	1,849,609.092	39° 38' 17.39"	79° 55' 19.81"	1,064.47	SMW-1 EXIST
414,885.680	1,849,712.367	39° 38' 17.93"	79° 55' 18.50"	1,070.27	SMW-2 EXIST
414,354.861	1,849,259.546	39° 38' 12.66"	79° 55' 24.25"	1,037.46	SMW-3 EXIST
418,904.694	1,849,942.528	39° 38' 57.66"	79° 55' 15.79"	1,231.38	*CONTROL POINT
426,303.275	1,850,483.448	39° 40' 10.80"	79° 55' 09.32"	1,239.96	*CONTROL POINT

* Control Points Are Located Off Mapping Area

AERIAL MAP MONITORING WELL LOCATIONS SABRATON, MONONGALIA COUNTY, WEST VIRGINIA

0' 1,000' 2,000' 3,000'



SCALE: 1 INCH = 1,000 FEET



Stantec Consulting Services Inc.
 1 Moore Avenue
 Buckhannon WV 26201
 Tel. 304.472.7140
 Fax. 304.472.6239
 www.stantec.com

PROJECT NO.	173611045
SURVEYED BY:	WAG
DRAWN BY:	JHL
CHECKED BY:	DEM
APPROVED BY:	JHL
DATE:	OCTOBER 27, 2009

NOTE:
 HORIZONTAL DATUM :
 WEST VIRGINIA STATE PLANE COORDINATES
 NAD 83 NORTH ZONE (CORS 96).

 VERTICAL DATUM : NAVD 88 GEOID 03 (CONUS)

 COORDINATE UNITS : US SURVEY FOOT
 DISTANCE UNITS : US SURVEY FOOT
 HEIGHT UNITS : US SURVEY FOOT

SHT. NO.	
	2
TOTAL	
	2