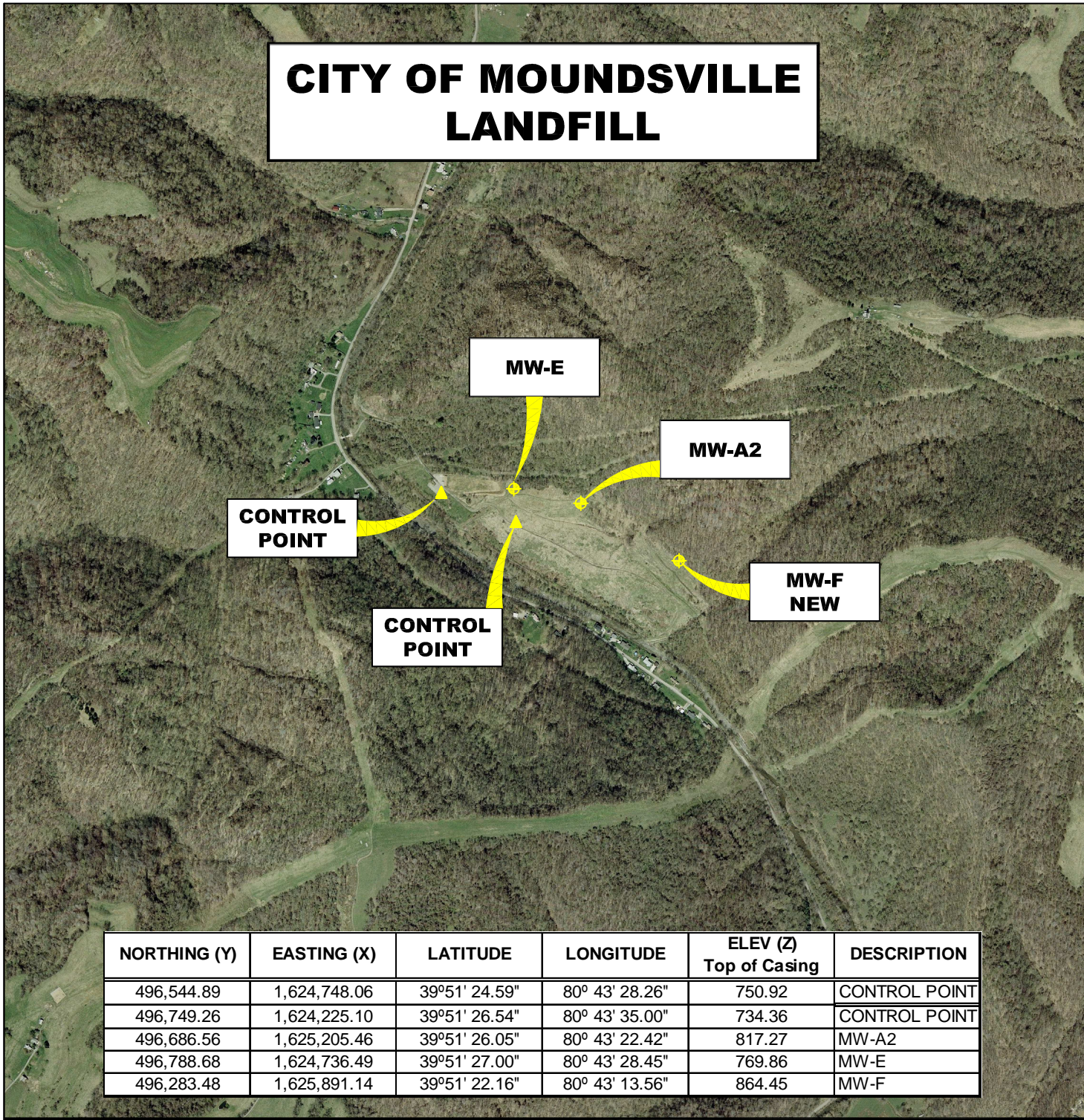


CITY OF MOUNDSVILLE LANDFILL



NORTHING (Y)	EASTING (X)	LATITUDE	LONGITUDE	ELEV (Z) Top of Casing	DESCRIPTION
496,544.89	1,624,748.06	39°51' 24.59"	80° 43' 28.26"	750.92	CONTROL POINT
496,749.26	1,624,225.10	39°51' 26.54"	80° 43' 35.00"	734.36	CONTROL POINT
496,686.56	1,625,205.46	39°51' 26.05"	80° 43' 22.42"	817.27	MW-A2
496,788.68	1,624,736.49	39°51' 27.00"	80° 43' 28.45"	769.86	MW-E
496,283.48	1,625,891.14	39°51' 22.16"	80° 43' 13.56"	864.45	MW-F

AERIAL MAP MONITORING WELL LOCATIONS NEAR MOUNDSVILLE, MARSHALL COUNTY, WEST VIRGINIA



SCALE: 1 INCH = 1,000 FEET



Stantec Consulting Services Inc.
 1 Moore Avenue
 Buckhannon WV 26201
 Tel. 304.472.7140
 Fax. 304.472.6239
 www.stantec.com

PROJECT NO.	173611044
SURVEYED BY:	WAG
DRAWN BY:	WAG
CHECKED BY:	DEM
APPROVED BY:	JHL
DATE:	DECEMBER 22, 2009

NOTE:
 HORIZONTAL DATUM :
 WEST VIRGINIA STATE PLANE COORDINATES
 NAD 83 NORTH ZONE (CORS 96).

 VERTICAL DATUM : NAVD 88 GEOID 09

 COORDINATE UNITS : US SURVEY FOOT
 DISTANCE UNITS : US SURVEY FOOT
 HEIGHT UNITS : US SURVEY FOOT

SHT. NO.	2
TOTAL	2