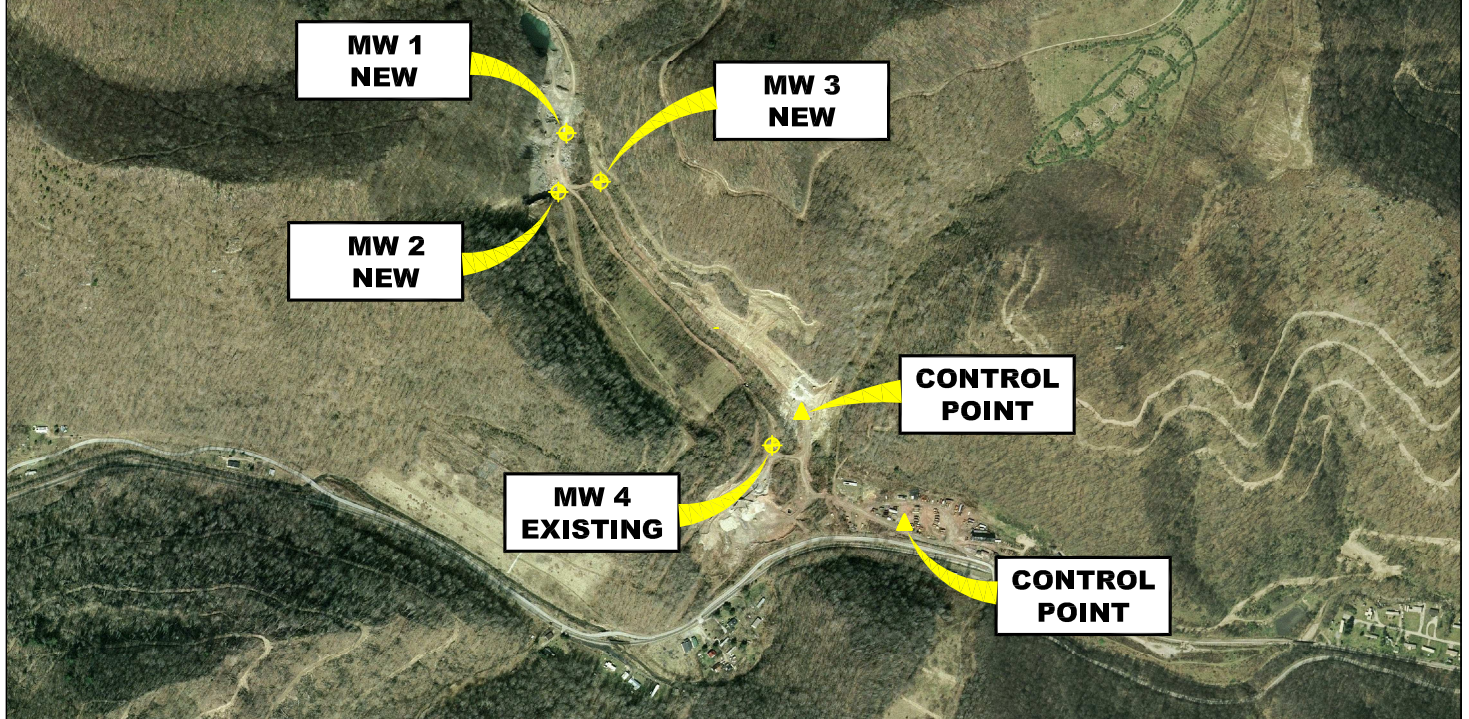


PINECREEK OMAR LANDFILL



NORTHING (Y)	EASTING (X)	LATITUDE	LONGITUDE	ELEV (Z) Top of Casing	DESCRIPTION
280,130.140	1,673,440.115	37° 45' 53.44"	82° 01' 14.70"	1060.51	MW-1 NEW
279,824.575	1,673,399.690	37° 45' 50.41"	82° 01' 15.16"	1061.55	MW-2 NEW
279,878.039	1,673,618.916	37° 45' 50.96"	82° 01' 12.44"	1035.13	MW-3 NEW
278,504.491	1,674,512.340	37° 45' 37.48"	82° 01' 01.13"	930.81	MW-4 NEW
278,671.086	1,674,665.352	37° 45' 39.15"	82° 00' 59.24"	951.02	CONTROL POINT
278,094.125	1,675,201.376	37° 45' 33.50"	82° 00' 52.49"	873.05	CONTROL POINT

AERIAL MAP MONITORING WELL LOCATIONS OMAR, LOGAN COUNTY, WEST VIRGINIA

0' 1,000' 2,000' 3,000'



SCALE: 1 INCH = 1,000 FEET



Stantec Consulting Services Inc.

1 Moore Avenue
Buckhannon WV 26201
Tel. 304.472.7140
Fax. 304.472.6239
www.stantec.com

PROJECT NO.	173611045
SURVEYED BY:	WAG
DRAWN BY:	JHL
CHECKED BY:	DEM
APPROVED BY:	JHL
DATE:	SEPTEMBER 23, 2009

NOTE:
HORIZONTAL DATUM :
WEST VIRGINIA STATE PLANE COORDINATES
NAD 83 SOUTH ZONE (CORS 96).

VERTICAL DATUM : NAVD 88 GEOID 03 (CONUS)

COORDINATE UNITS : US SURVEY FOOT
DISTANCE UNITS : US SURVEY FOOT
HEIGHT UNITS : US SURVEY FOOT

SHT. NO.	2
TOTAL	2