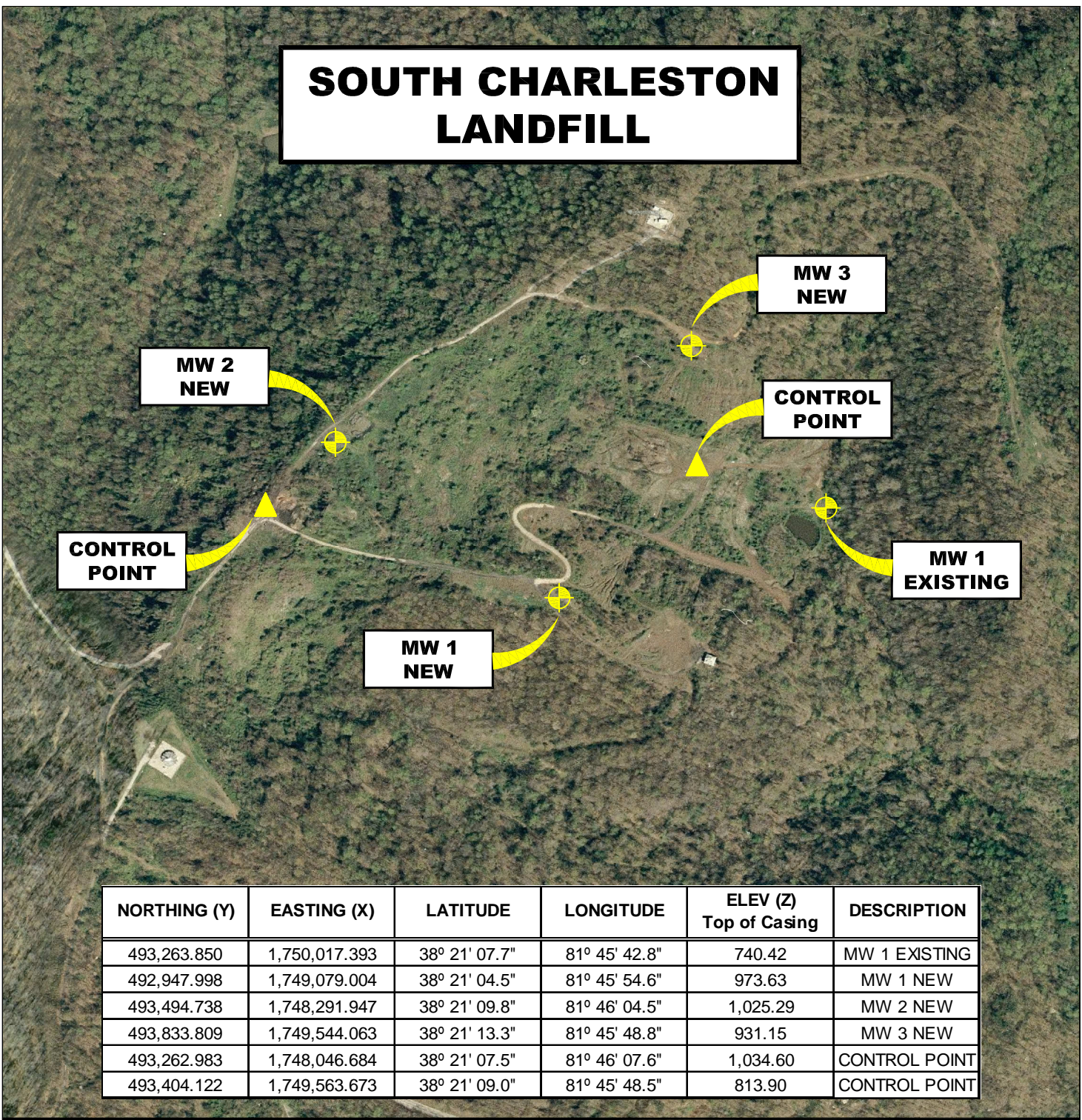


# SOUTH CHARLESTON LANDFILL



NORTHING (Y)	EASTING (X)	LATITUDE	LONGITUDE	ELEV (Z) Top of Casing	DESCRIPTION
493,263.850	1,750,017.393	38° 21' 07.7"	81° 45' 42.8"	740.42	MW 1 EXISTING
492,947.998	1,749,079.004	38° 21' 04.5"	81° 45' 54.6"	973.63	MW 1 NEW
493,494.738	1,748,291.947	38° 21' 09.8"	81° 46' 04.5"	1,025.29	MW 2 NEW
493,833.809	1,749,544.063	38° 21' 13.3"	81° 45' 48.8"	931.15	MW 3 NEW
493,262.983	1,748,046.684	38° 21' 07.5"	81° 46' 07.6"	1,034.60	CONTROL POINT
493,404.122	1,749,563.673	38° 21' 09.0"	81° 45' 48.5"	813.90	CONTROL POINT

## AERIAL MAP MONITORING WELL LOCATIONS ROCK CREEK , KANAWHA COUNTY, WEST VIRGINIA



SCALE: 1 INCH = 500 FEET



**Stantec Consulting Services Inc.**  
 1 Moore Avenue  
 Buckhannon WV 26201  
 Tel. 304.472.7140  
 Fax. 304.472.6239  
 www.stantec.com

PROJECT NO.	173611045
SURVEYED BY:	WAG
DRAWN BY:	JHL
CHECKED BY:	DEM
APPROVED BY:	JHL
DATE:	SEPTEMBER 4, 2009

**NOTE:**  
 HORIZONTAL DATUM :  
 WEST VIRGINIA STATE PLANE COORDINATES  
 NAD 83 SOUTH ZONE (CORS 96).  
  
 VERTICAL DATUM : NAVD 88 GEOID 03 (CONUS)  
  
 COORDINATE UNITS : US SURVEY FOOT  
 DISTANCE UNITS : US SURVEY FOOT  
 HEIGHT UNITS : US SURVEY FOOT

SHT. NO.	2
TOTAL	2