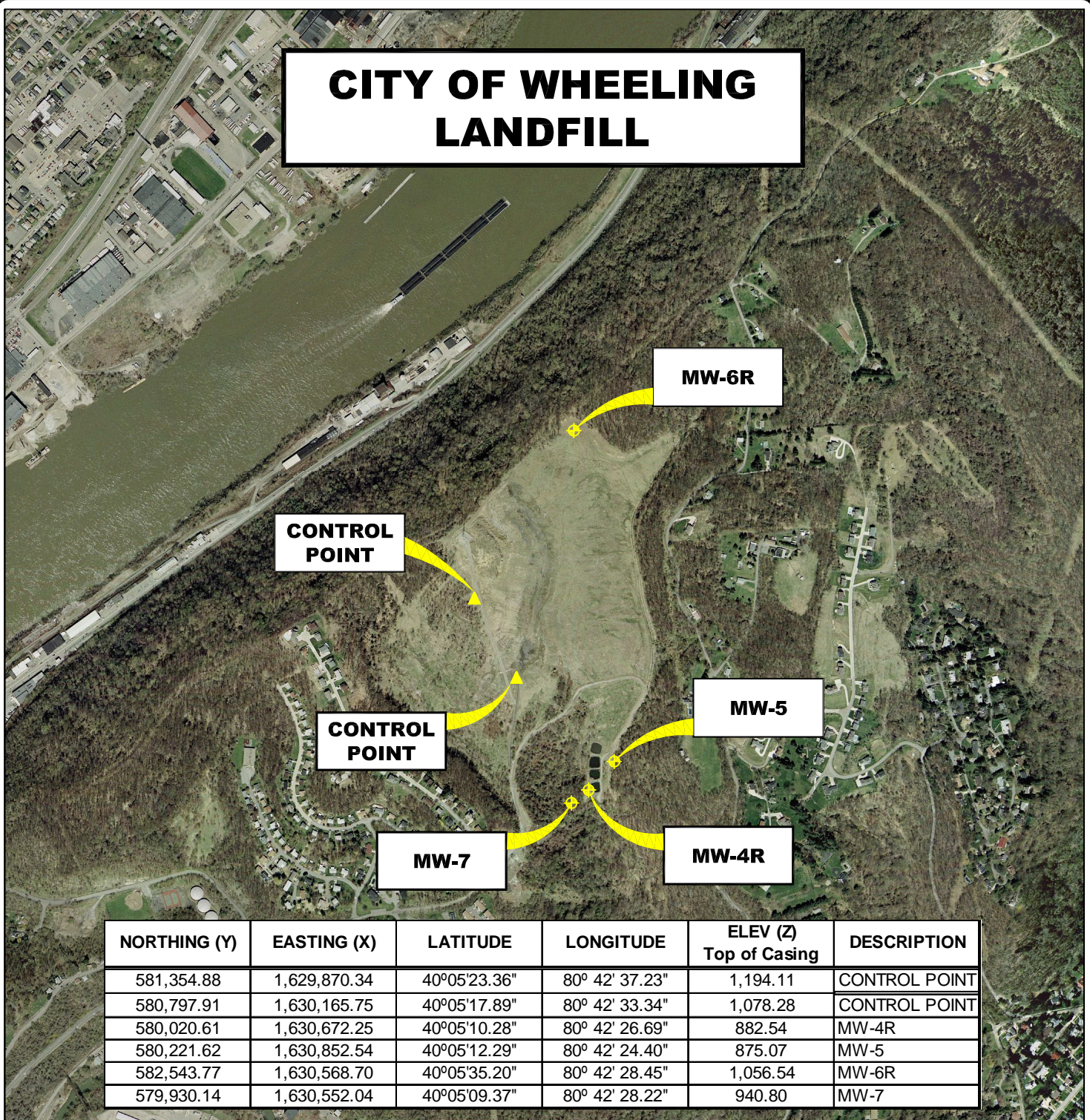


CITY OF WHEELING LANDFILL



NORTHING (Y)	EASTING (X)	LATITUDE	LONGITUDE	ELEV (Z) Top of Casing	DESCRIPTION
581,354.88	1,629,870.34	40°05'23.36"	80° 42' 37.23"	1,194.11	CONTROL POINT
580,797.91	1,630,165.75	40°05'17.89"	80° 42' 33.34"	1,078.28	CONTROL POINT
580,020.61	1,630,672.25	40°05'10.28"	80° 42' 26.69"	882.54	MW-4R
580,221.62	1,630,852.54	40°05'12.29"	80° 42' 24.40"	875.07	MW-5
582,543.77	1,630,568.70	40°05'35.20"	80° 42' 28.45"	1,056.54	MW-6R
579,930.14	1,630,552.04	40°05'09.37"	80° 42' 28.22"	940.80	MW-7

AERIAL MAP MONITORING WELL LOCATIONS

WHEELING, OHIO COUNTY, WEST VIRGINIA

0' 1,000' 2,000' 3,000'



SCALE: 1 INCH = 1,000 FEET



Stantec Consulting Services Inc.

1 Moore Avenue
Buckhannon WV 26201
Tel. 304.472.7140
Fax. 304.472.6239
www.stantec.com

PROJECT NO. 173611044

SURVEYED BY: WAG

DRAWN BY: WAG

CHECKED BY: DEM

APPROVED BY: JHL

DATE: DECEMBER 22, 2009

NOTE:

HORIZONTAL DATUM :
WEST VIRGINIA STATE PLANE COORDINATES
NAD 83 NORTH ZONE (CORS 96).

VERTICAL DATUM : NAVD 88 GEOID 09

COORDINATE UNITS : US SURVEY FOOT
DISTANCE UNITS : US SURVEY FOOT
HEIGHT UNITS : US SURVEY FOOT

SHT. NO.
2
TOTAL
2