

GREEN VALLEY HIGHWALL “D” AND REFUSE PILES

County: Greenbrier

Nearest Town: Green Valley

U.S.G.S. 7.5' Quadrangle: Quinwood

Scope

Seven (7) acre Refuse Area

15 Collapsed Mine Portals

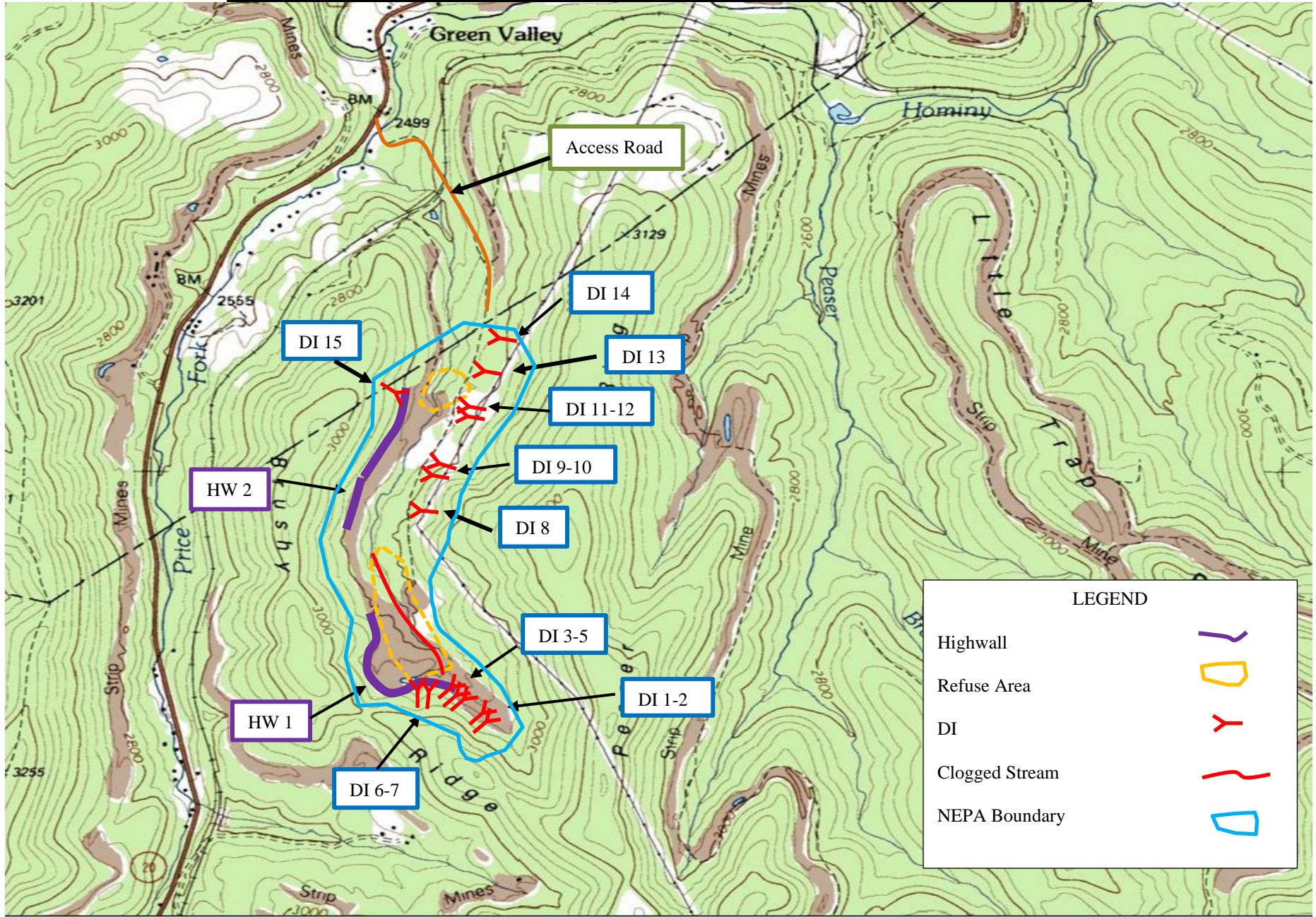
700 Feet Natural Stream Upgrades

Highwall Backfill

Initial Estimate: \$1.2 Million

NEPA Map

Green Valley Highwall "D" and Refuse Piles; WV-1577



Quinwood Quad
Latitude: 38° 05' 8.41"

Greenbrier County
Longitude: 80° 41' 50.94"

GREEN VALLEY HIGHWALL “A” AND DRAINING PORTALS

County: Nicholas

Nearest Town: Green Valley

U.S.G.S. 7.5' Quadrangle: Quinwood

Scope

9 Mine Portals

4250 Linear Feet of 30 to 60 Feet tall Highwall

Initial Estimate: \$1.7 Million

Location Map
Green Valley Highwall "A" and Draining Portals; WV-1472



Quinwood Quad
Latitude: 38° 05' 58.18"

Nicholas County
Longitude: 80° 42' 23.69"

BRUSHY MEADOW CREEK HIGHWALL “A”

County: Nicholas/Greenbrier

Nearest Town: Leivasy

U.S.G.S. 7.5' Quadrangle: Nettie

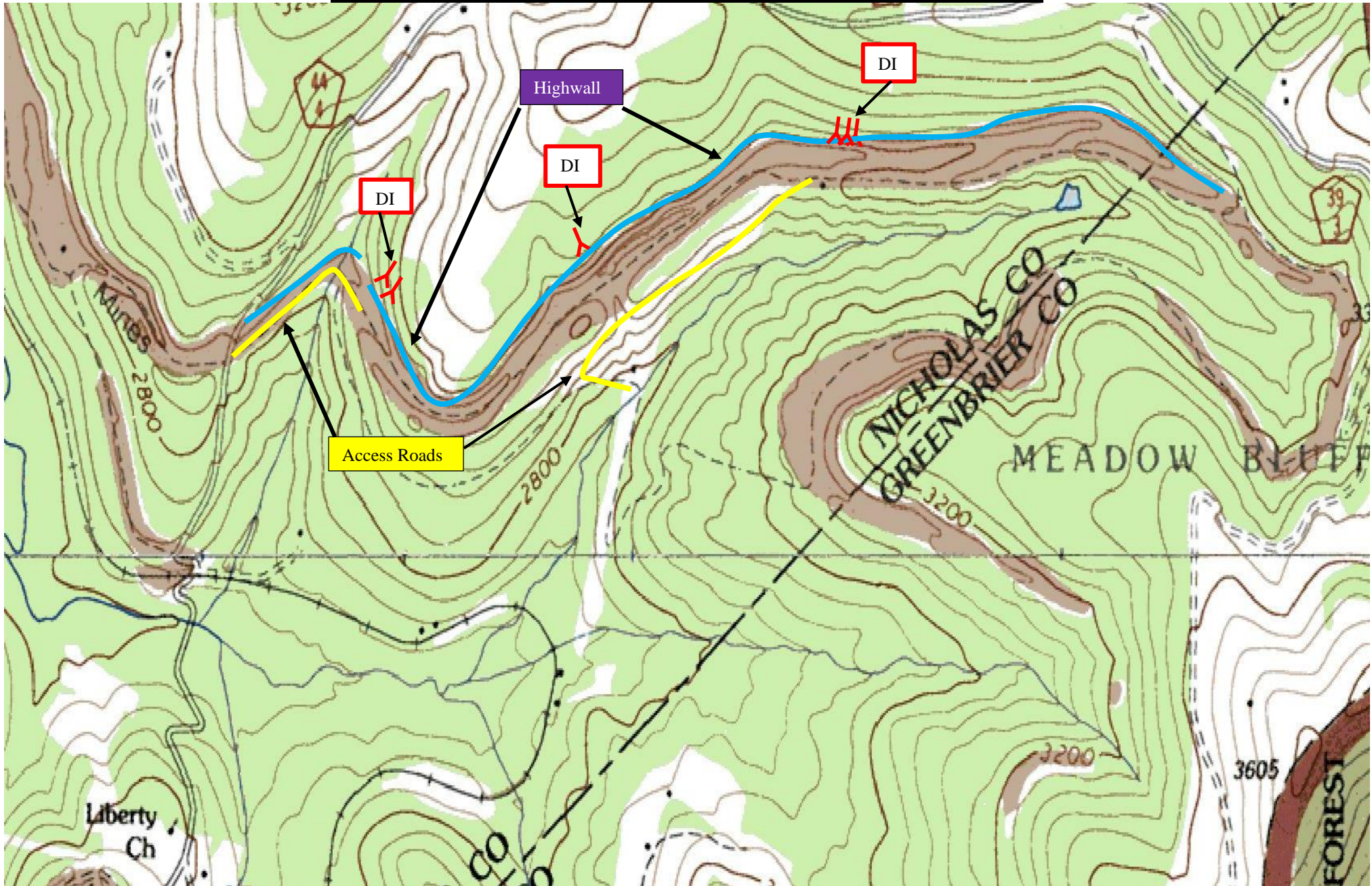
Scope

8500 Linear Feet of 100 Feet tall Highwall

Five (5) Collapsed Mine Portals

Initial Estimate: \$9.3 Million

Location Map
Brushy Meadow Creek Highwall "A"; WV-3104



Nettie Quad
Latitude: 38° 07' 54.49"

Nicholas/Greenbrier County
Longitude: 80° 38' 33.08"

BRUSHY MEADOW CREEK HIGHWALL “B”

County: Nicholas

Nearest Town: Leivasy

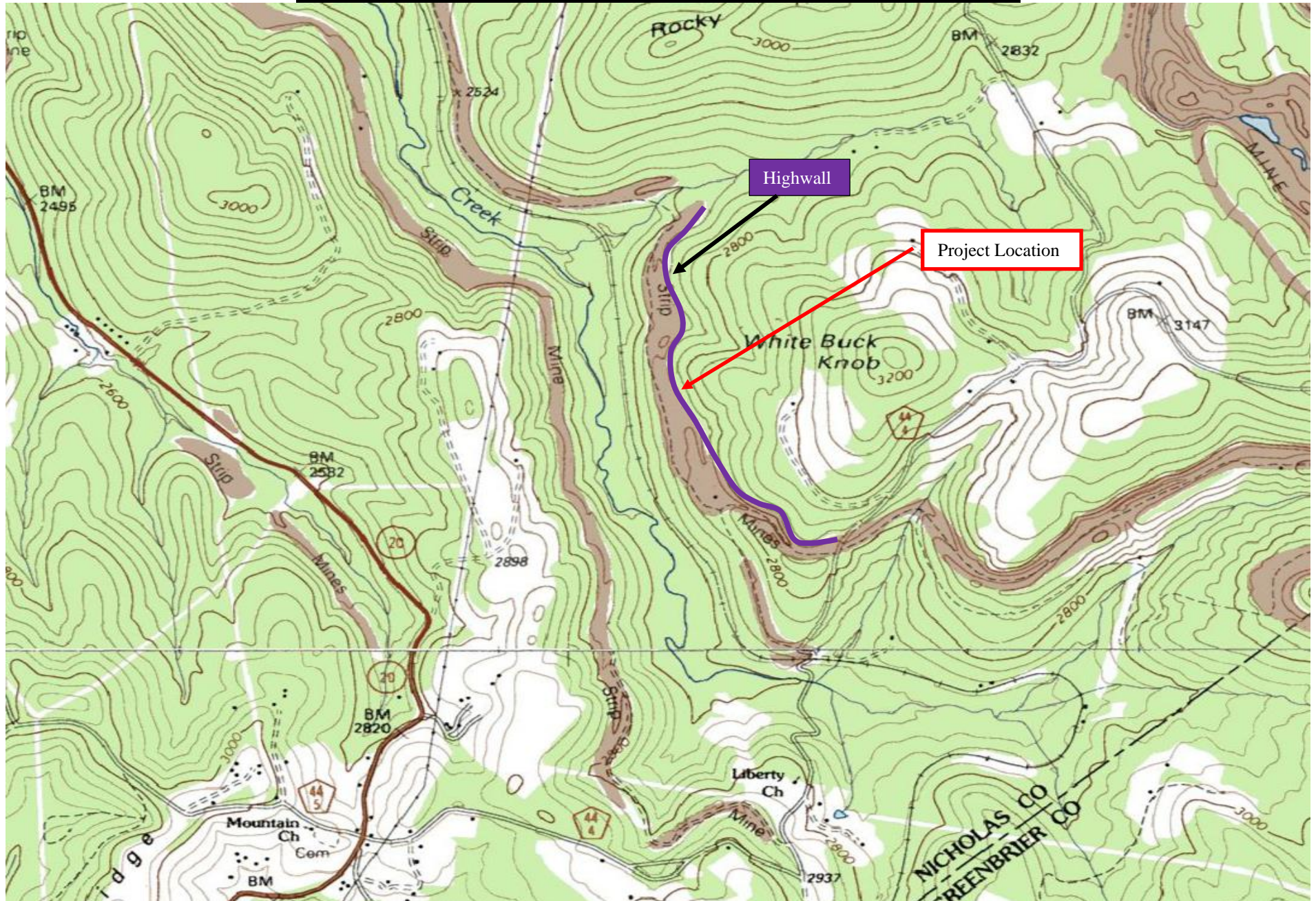
U.S.G.S. 7.5' Quadrangle: Nettie

Scope

5200 Linear Feet of 60 to 100 Feet tall Highwall

Initial Estimate: \$2.5 Million

Project Location Map Brushy Meadow Creek Highwall "B"; WV-2968



Nettie Quad
Latitude: 38° 07' 56.13"

Nicholas County
Longitude: 80° 39' 41.96"

BIG RUN SLIDE AND DRAINAGE

County: Webster

Nearest Town: Bolair

U.S.G.S. 7.5' Quadrangle: Webster Springs

Scope

1.5 Acre Landslide

1.2 Acre Surface Impoundment

300 Feet of 50 Foot tall Highwall

Initial Estimate: \$500,000

Project Location Map Big Run Slide and Drainage; WV-7116



Webster Springs Quad
Latitude: 38° 25' 13"

Webster County
Longitude: 80° 22' 57"

SHANT BRANCH PORTALS

County: Nicholas

Nearest Town: Birch River

U.S.G.S. 7.5' Quadrangle: Widen

Scope

5 Mine Portals

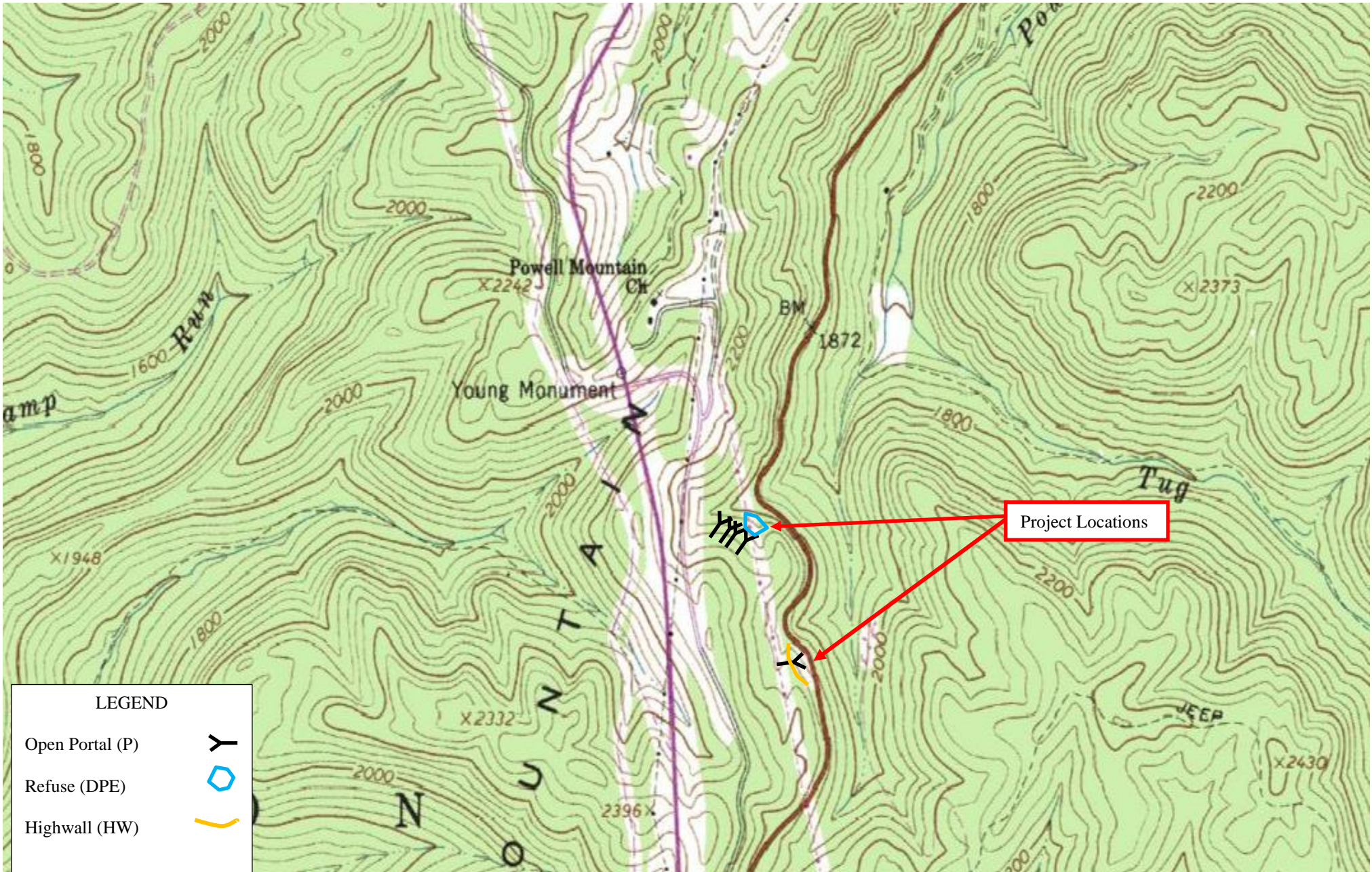
1.2 Acre Surface Impoundment

500 Feet of 50 Foot tall Highwall

Initial Estimate: \$280,000

NEPA Map

Shant Branch Portals; WV-2379



Widen Quad
Latitude: 38° 26' 34.4"

Nicholas County
Longitude: 80° 47' 3.4"

Tioga Strip Highwalls

County: Nicholas

Nearest Town: Delphi

U.S.G.S. 7.5' Quadrangle: Tioga

Scope

2 Mine Portals

1 Acre Refuse Area

14,600 Feet of 20 Foot tall Highwall

Initial Estimate: \$2.8 Million

