



# Alliance Consulting, Inc.



**Engineering and Materials Testing**



**Construction Management and Oversight**



**Environmental Surveys**



**Surveying and Drone Services**



# About Our Company

- Alliance Consulting, Inc. is a multi-disciplinary Civil and Environmental Engineering firm founded in 2001.
- Alliance is founded on an operating philosophy that places our clients' needs paramount in our planning and business development.
- With this philosophy, Alliance has continued to grow both the number of services and the geographical range in which those services are routinely offered.
- Office locations in Beaver, WV (Headquarters), Canonsburg, PA (Branch office, Spring 2007), and Johnston City, Illinois (Satellite office, 2008).



# General Services & Capabilities

- Alliance integrates engineering, environmental, ecological, permitting and surveying services to complete turn-key projects for a variety of clients.
- Our staff of engineers, geologists, surveyors, biologists, and environmental professionals can take projects from conception to construction thru reclamation.
- Alliance provides services for private companies and individuals, as well as state and local agencies such as the WVDOH, WVDEP, County Economic Development Authorities, Conservation Agencies and Watershed Associations.





# Services & Capabilities

- Engineering Services
  - Reclamation/Restoration Planning
  - Dam/Impoundment Design/Modification/Inspection Services
  - Construction Management
  - Geologic/Hydrogeologic Services
  - Investigative Engineering
- Environmental Surveys/Natural Resource/Ecological Services
  - Stream and Wetland Restoration
  - Environmental Surveys
  - Specialty Environmental Construction
  - Threatened and Endangered Species Surveys
  - NEPA compliance

- Additional Services

- Drone & Surveying Services
- Regulatory Liaison and Representation
- Materials Testing Laboratory Services
- Construction Monitoring and Oversight
- IJJA compliance





# Engineering

Alliance engineers have years of experience in multiple areas including site developments in the following sectors:

- Industrial
- Commercial
- Residential/Private
- Landfill
- Public (WVDOH/WVDEP, etc.)
- Mining
- Natural Gas





# Contract 4 Project South

Logan and Kanawha Counties

## Logan County

Big Creek Landslide  
Black Bottom Drainage  
Logan County Airport UMF  
Camp Chief Logan BSA Portals

## Kanawha County

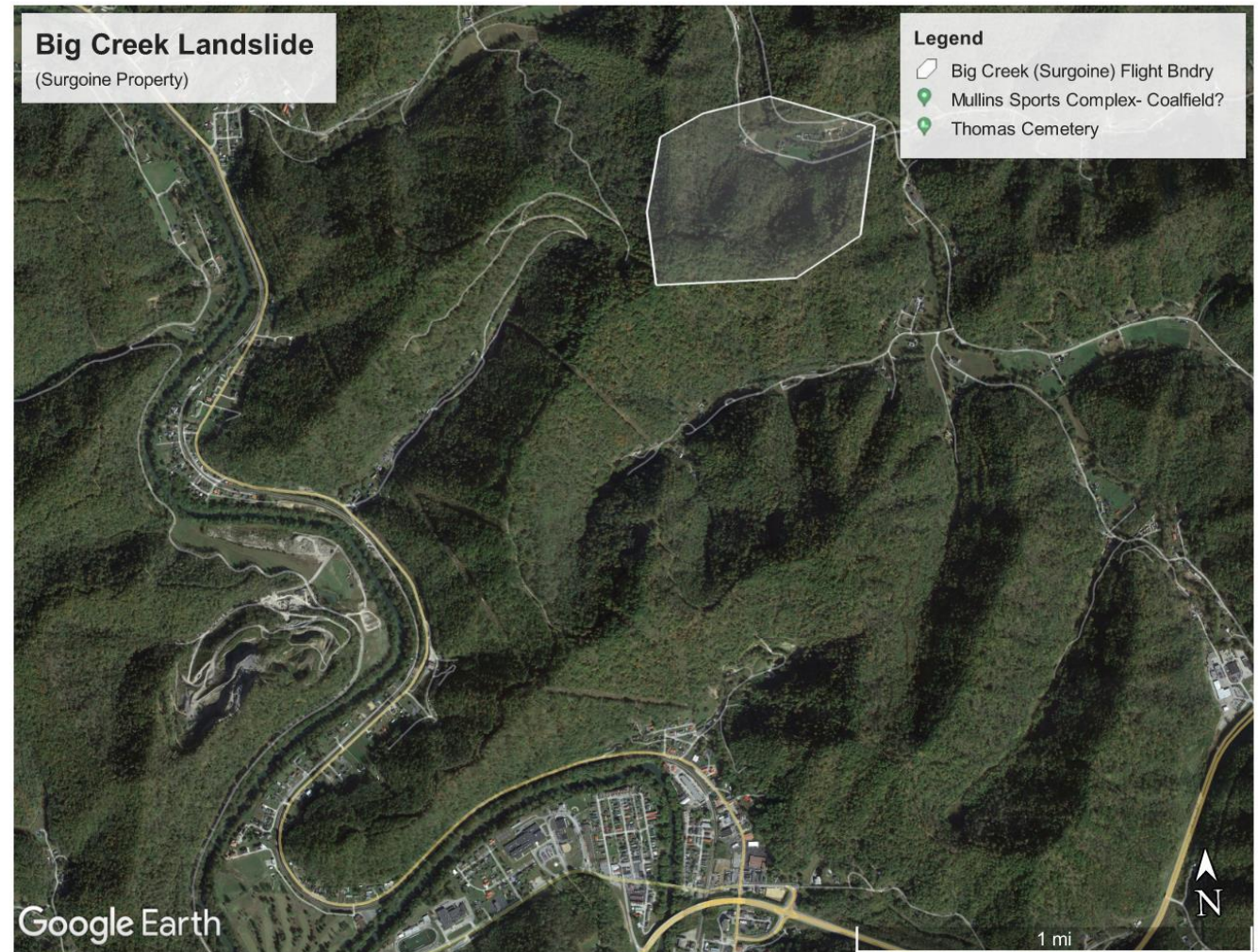
Campbells Creek Drainage  
Gun Range Road (Dials) Portals



# Big Creek (Surgoine) Landslide Phase II

## Landslide Remediation Project:

- Previously repaired project
- Landslide behind two occupied dwellings
- Drilling investigation to identify bedrock depth
- Removal of earth behind structures
- Toe of slide in close proximity to the homes
- Waste pile located on adjacent property
- Potential need to establish drainage controls





# Big Creek (Surgoine) Landslide Phase II



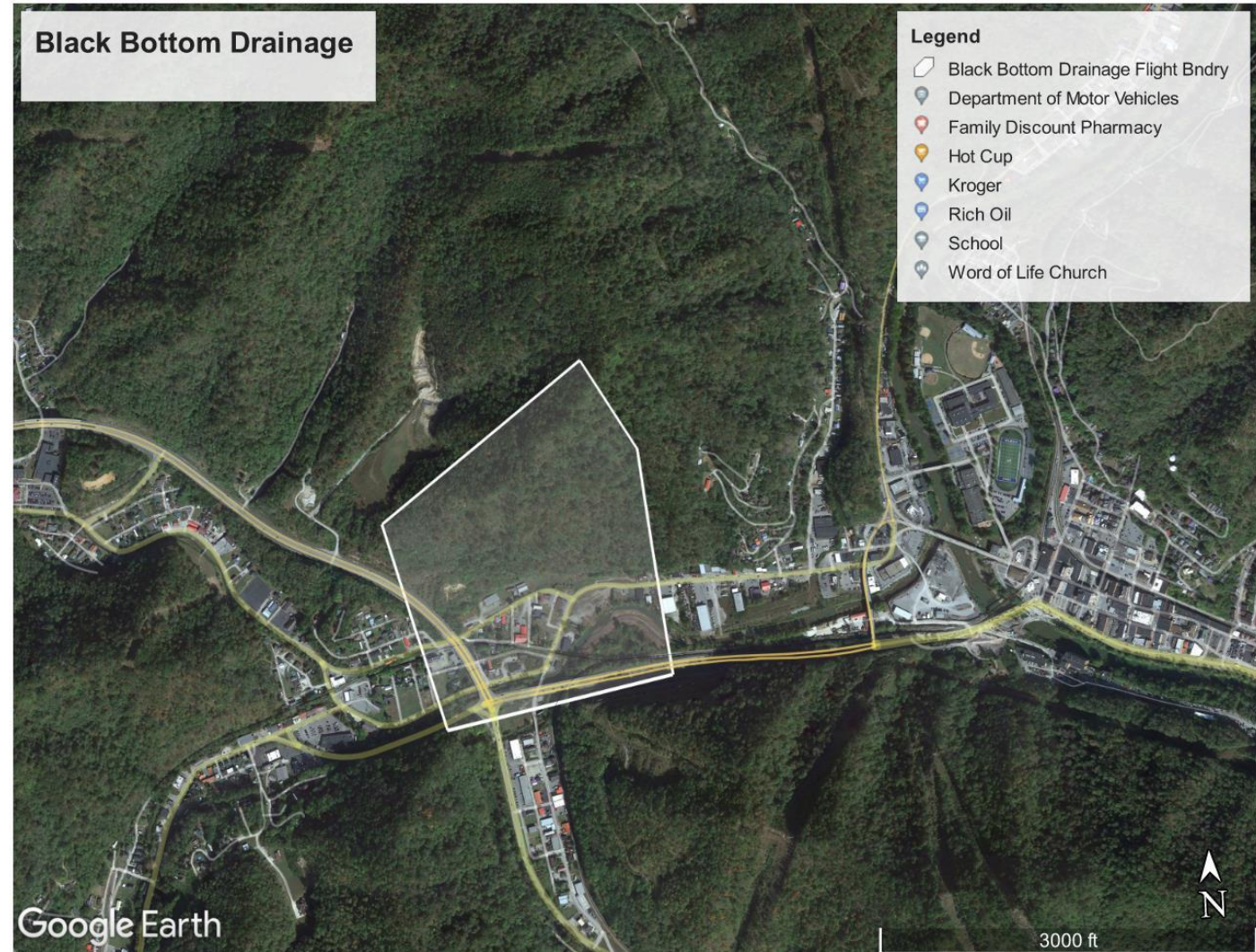




# Black Bottom Drainage

## AMD Drainage Improvement Project:

- Close proximity to property owner house and school
- Drainage improvements
- 4 Draining Wet seal portal installation
- 9 Dry seal portal installations
- Surface ditch installation
- Drop inlet and piping culverts across roadway
- Sinkhole Repair





# Black Bottom Drainage





# Logan County Airport UMF

## Extinguish Underground Mine Fire Project:

- Underground fire at end of runway
- 5 Block Mine Fire approximately 80 feet underground
- Last known temperatures up to 765 degrees
- Extensive drilling program to be conducted
- Extents of fire unknown at this time
- Potential blasting, large volume of earth moving
- Various methods of extinguishment
- Numerous venting/smoking ground fissures
- Small AMD drainage control and treatment along road





# Logan County Airport UMF





# Camp Chief Logan BSA Portals

## Portal Closure Project:

- 30 – 40 open portals
- Drilling investigation on wet portals
- Installation of wet/dry seals and bat gates where needed
- Portal spread over large area
- Access is fair but will require some improvements/tree clearing
- AMD collection and passive treatment





# Camp Chief Logan BSA Portals

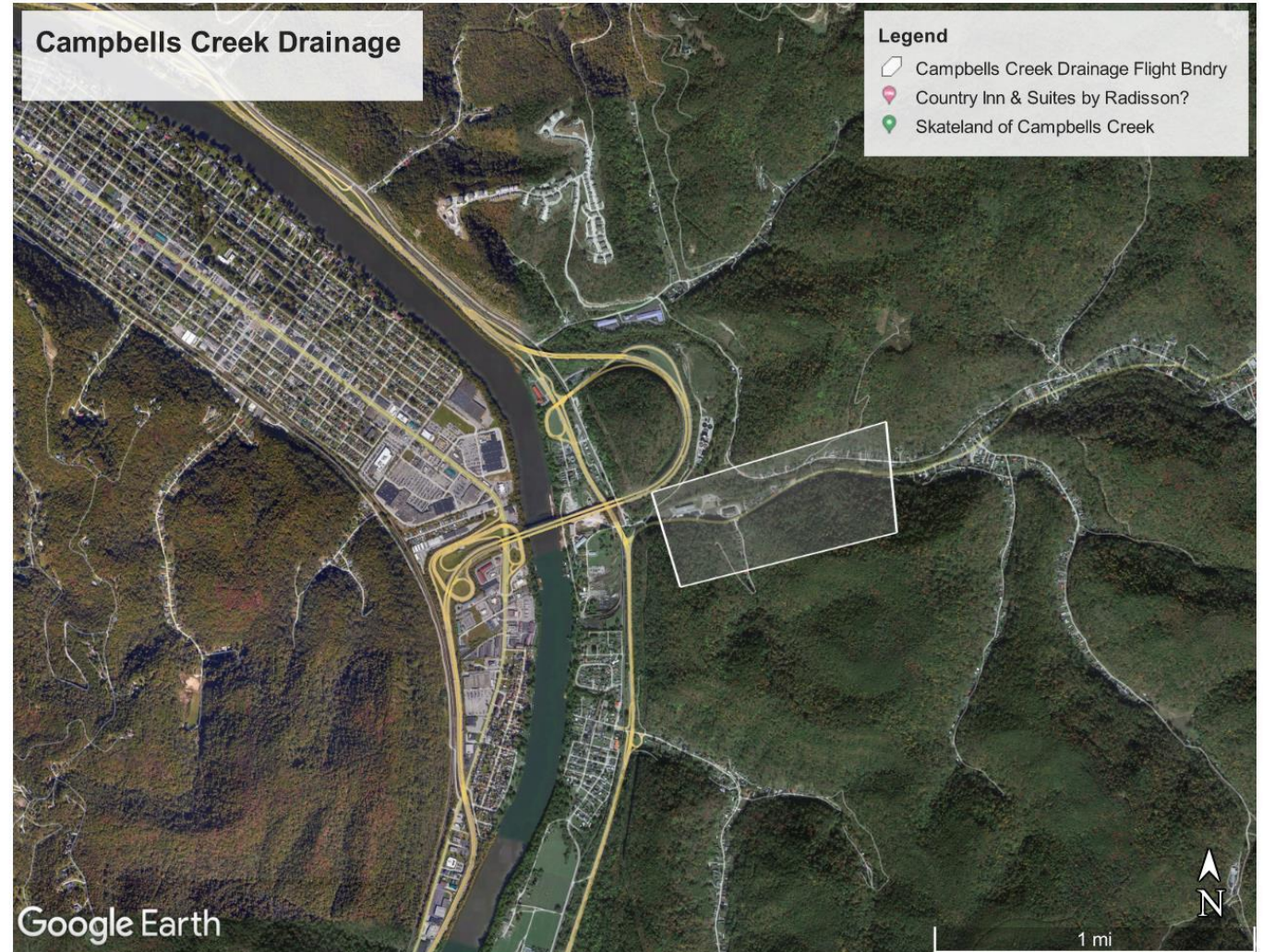




# Campbells Creek Drainage

## AMD Drainage Improvement Project:

- Close proximity to property owner houses
- Approximately 0.25 miles of seepage
- Wet Seal installation
- Surface ditch installation
- Drop inlet and piping culverts across roadway





# Campbells Creek Drainage







# Gun Range Road (Dials) Portals

## Portal Closure Project:

- Located in Kanawha State Forest
- Establish site access along current trails
- 7 portals to be dry sealed/bat gated





# Gun Range Road (Dials) Portals



# Questions?

