



Alliance Consulting, Inc.



Engineering and Materials



**Construction
Management and**



Environmental



Surveying and Drone



About Our Company

- Alliance Consulting, Inc. is a multi-disciplinary Civil and Environmental Engineering firm founded in 2001.
- Alliance is founded on an operating philosophy that places our clients' needs paramount in our planning and business development.
- With this philosophy, Alliance has continued to grow both the number of services and the geographical range in which those services are routinely offered.
- Office locations in Beaver, WV (Headquarters), Canonsburg, PA (Branch office, Spring 2007), and Johnston City, Illinois (Satellite office, 2008).



General Services & Capabilities

- Alliance integrates engineering, environmental, ecological, permitting and surveying services to complete turn-key projects for a variety of clients.
- Our staff of engineers, geologists, surveyors, biologists, and environmental professionals can take projects from conception to construction thru reclamation.
- Alliance provides services for private companies and individuals, as well as state and local agencies such as the WVDOH, WVDEP,





Services & Capabilities

- Engineering Services
 - Reclamation/Restoration Planning
 - Dam/Impoundment Design/Modification/Inspection Services
 - Construction Management
 - Geologic/Hydrogeologic Services
 - Investigative Engineering
- Environmental Surveys/Natural Resource/Ecological Services
 - Stream and Wetland Restoration
 - Environmental Surveys
 - Specialty Environmental Construction
 - Threatened and Endangered Species Surveys
 - NEPA compliance

- Additional Services

- Drone & Surveying Services
- Regulatory Liaison and Representation
- Materials Testing Laboratory Services
- Construction Monitoring and





Engineering

Alliance engineers have years of experience in multiple areas including site developments in the following sectors:

- Industrial
- Commercial
- Residential/Private
- Landfill
- Public (WVDOH/WVDEP, etc.)
- Mining
- Natural Gas





Contract 4 Project South

Logan and Kanawha Counties

Logan County

Big Creek Landslide
Black Bottom Drainage
Logan County Airport UMF
Camp Chief Logan BSA Portals

Kanawha County

Campbells Creek Drainage
Gun Range Road (Dials) Portals



Big Creek (Surgoine) Landslide Phase II

Landslide Remediation Project:

- Previously repaired project
- Landslide behind two occupied dwellings
- Drilling investigation to identify bedrock depth
- Removal of earth behind structures
- Toe of slide in close proximity to the homes
- Waste pile located on adjacent property
- Potential need to establish drainage controls





Big Creek (Surgoine) Landslide Phase II

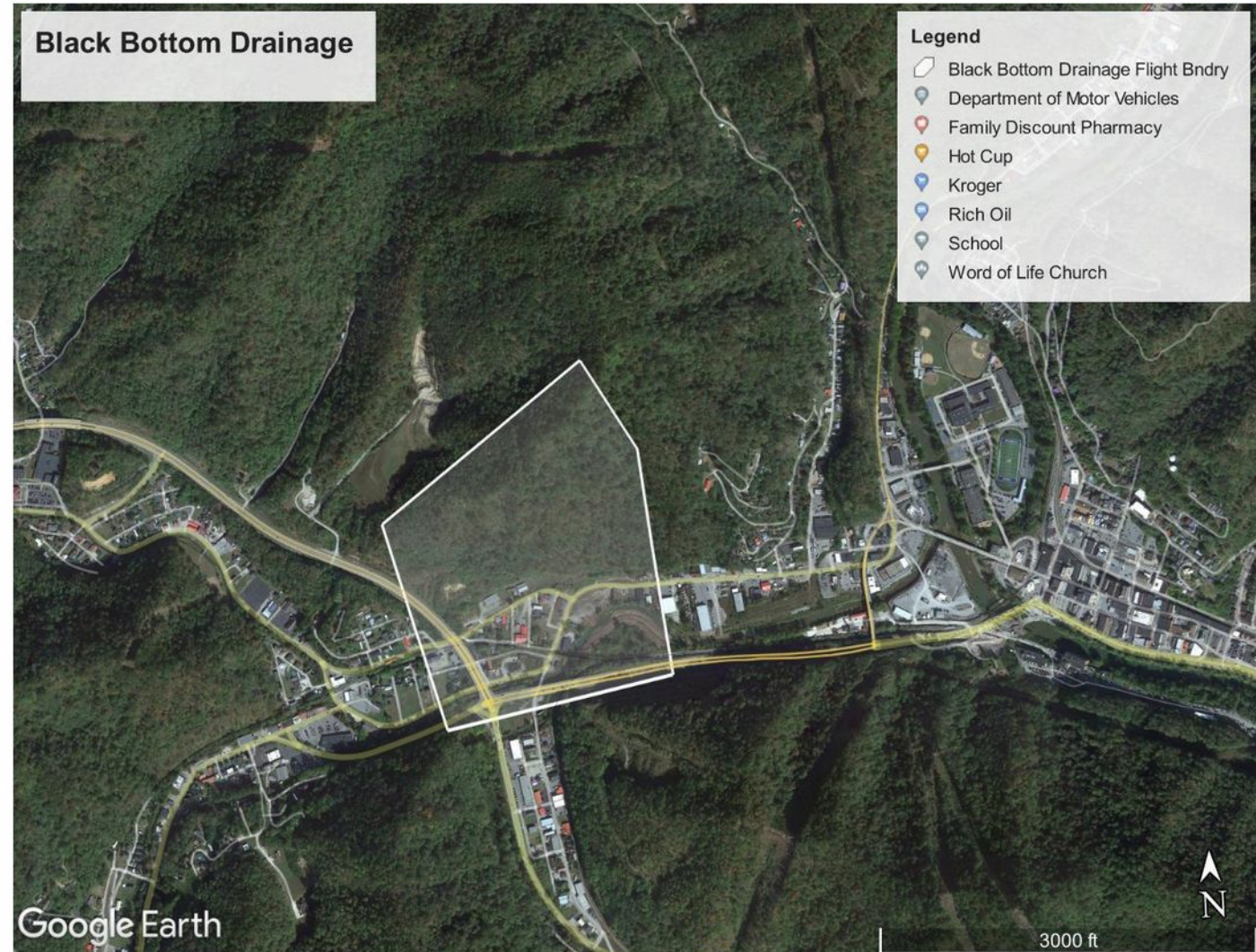




Black Bottom Drainage

AMD Drainage Improvement Project:

- Close proximity to property owner house and school
- Drainage improvements
- 4 Draining Wet seal portal installation
- 9 Dry seal portal installations
- Surface ditch installation
- Drop inlet and piping culverts across roadway
- Sinkhole Repair





Black Bottom Drainage





Logan County Airport UMF

Extinguish Underground Mine Fire Project

- Underground fire at end of runway
- 5 Block Mine Fire approximately 80 feet underground
- Last known temperatures up to 765 degrees
- Extensive drilling program to be conducted
- Extents of fire unknown at this time
- Potential blasting, large volume of earth moving
- Various methods of extinguishment
- Numerous venting/smoking ground fissures
- Small AMD drainage control and





Logan County Airport UMF





Camp Chief Logan BSA Portals

Portal Closure Project:

- 30 - 40 open portals
- Drilling investigation on wet portals
- Installation of wet/dry seals and bat gates where needed
- Portal spread over large area
- Access is fair but will require some improvements/tree clearing
- AMD collection and passive treatment





Camp Chief Logan BSA Portals

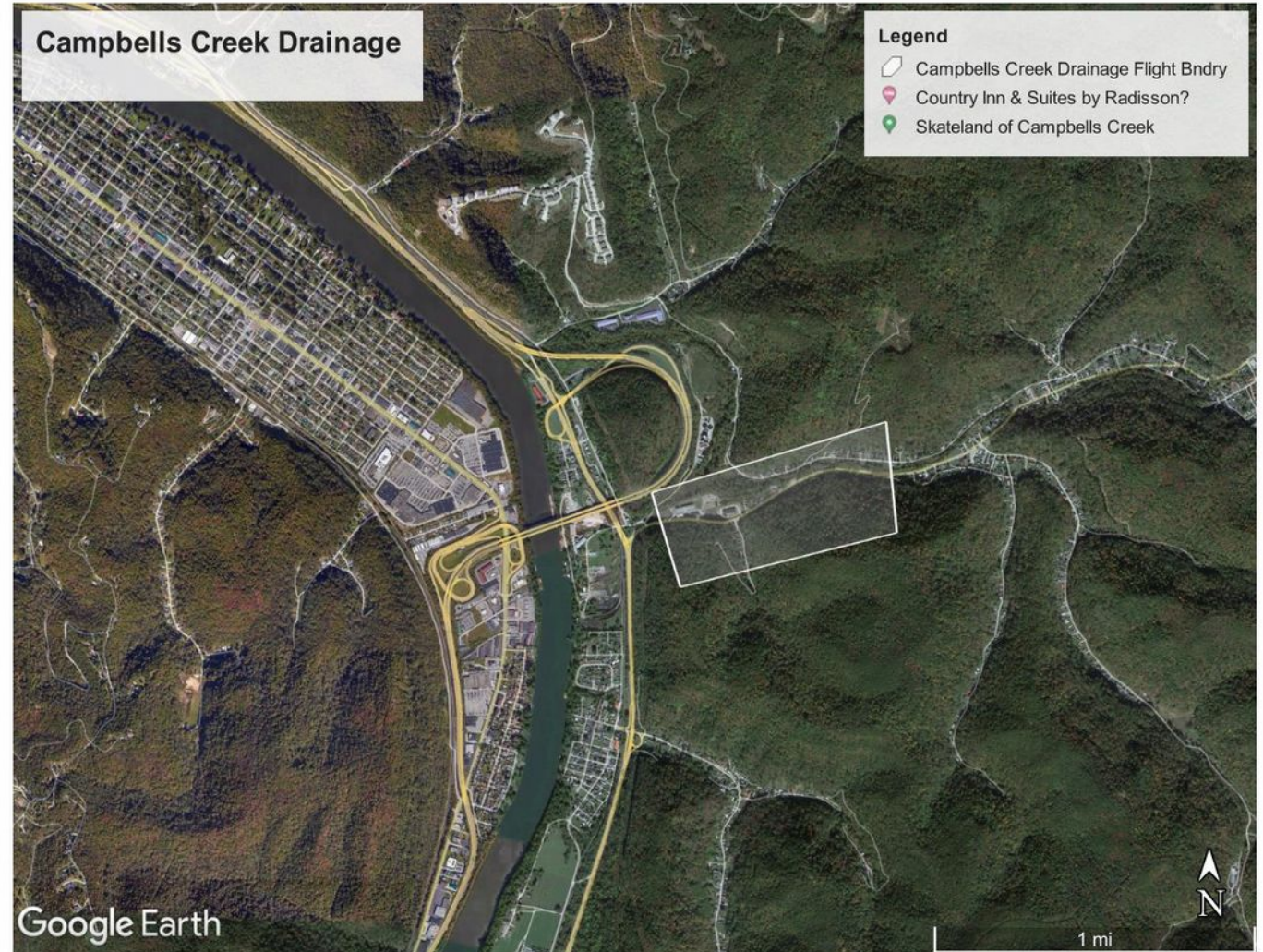




Campbells Creek Drainage

AMD Drainage Improvement Project:

- Close proximity to property owner houses
- Approximately 0.25 miles of seepage
- Wet Seal installation
- Surface ditch installation
- Drop inlet and piping culverts across roadway





Campbells Creek Drainage





Gun Range Road (Dials) Portals

Portal Closure Project:

- Located in Kanawha State Forest
- Establish site access along current trails
- 7 portals to be dry sealed/bat gated





Gun Range Road (Dials) Portals



Questions?

